

Product datasheet for MR204080

Vdac2 (NM_011695) Mouse Tagged ORF Clone

Product data:

Product Type:	Expression Plasmids
Product Name:	Vdac2 (NM_011695) Mouse Tagged ORF Clone
Tag:	Myc-DDK
Symbol:	Vdac2
Synonyms:	mVDAC2; mVDAC6; Vdac6
Mammalian Cell Selection:	Neomycin
Vector:	pCMV6-Entry (PS100001)
E. coli Selection:	Kanamycin (25 ug/mL)
ORF Nucleotide Sequence:	>MR204080 ORF sequence Red=Cloning site Blue=ORF Green=Tags(s)

TTTTGTAATACGACTCACTATAGGGCGCCGGGAATTCGTCGACTGGATCCGGTACCGAGGAGATCTGCC
GCC**CGATCGCC**

ATGGCTGAGTGCTGTGTACCGGTATGCCACGGCCGATGTGTATCCCTCCACCCTATGCTGACCTCGGCA
AAGCTGCCAGAGACATTTTCAACAAAGGATTTGGCTTTGGGCTGGTGAAGCTGGATGTGAAGACGAAGTC
ATGCAGCGGTGTGGAATTTTCAACATCTGGCTCATCTAATACAGACACTGGTAAAGTTAGCGGGACCTTG
GAGACCAAGTACAAATGGTGTGAGTATGGTCTGACTTTCACAGAGAAGTGAACACCGATAACACTCTGG
GGACAGAGATTGCAATTGAAGACCAGATTTGTCAAGTTTGAAGTACTTTTGACACCACCTTTTCACC
GAACACAGGAAAAGAAAAGTGGTAAAATCAAGTCTGCTTACAAGAGGGAGTGTATAAACCTCGGCTGTGAT
GTTGACTTTGATTTTGTGGACCTGCCATCCATGGGTCAGCTGTCTTTGGTTACGAGGGCTGGCTTGCTG
GGTACCAAATGACCTTTGACAGTGCCAAGTCAAAGCTGACAAGGAGTAACTTTGCAGTCGGCTACAGGAC
TGGGGACTTCCAGCTACACACAAATGTAATAATGGGACAGAATTTGGAGGATCAATTTATCAGAAAAGTA
TGTGAAGATTTTGACACTTCAGTAAACCTCGCTTGGACATCAGGTACCAACTGCACTCGTTTTGGCATTG
CAGCTAAATACCAGTTGGATCCTACTGCTTCTATCTCTGCAAAGGTCAACAACTAGTTTAATTGGAGT
GGGCTATGCTCAGACTCTGAGGCCTGGTGTGAAGCTTACACTGTCTGCTCTGGTAGACGGGAAGAGCTTT
AATGCTGGAGGCCACAACTTGGGCTTGCCTTGAATTGGAGGCT

ACGCGTACGCGGCCGCTCGAGCAGAAACTCATCTCAGAAGAGGATCTGGCAGCAAATGATATCCTGGATT
ACAAGGATGACGACGATAAGGTTTAA



[View online »](#)

Protein Sequence: >MR204080 protein sequence
 Red=Cloning site Green=Tags(s)

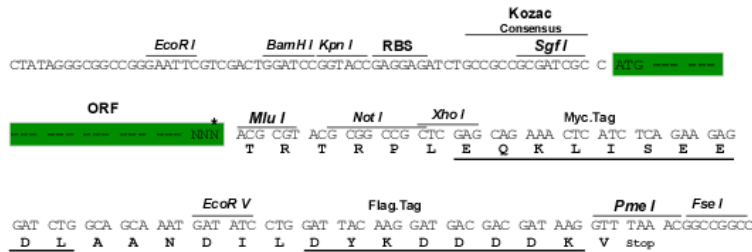
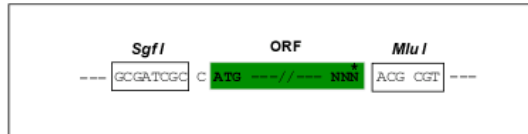
MAECCVPVCPRPMCIPPPYADLGAARDIFNKGFGFLVKLDVTKSCSGVEFSTSGSSNTDTGKVSGL
 ETKYKWEYGLTFTEKWNTDNTLGTEIAIEDQICQGLKLTDFDTTFSPNTGKKSIGKISAYKRECINL
 GCDVDFDFAGPAIHGSAVFGYEGWLAGYQMTFDSAKSKLTRSNFAVGYRTGDFQLHTNVNNGTEFGGSIYQKV
 CEDFDTSVNLAWTSGTNRFGIAAKYQLDPTASISAKVNSSLIGVGYAQTLRPGVKLTLSALVDGKSF
 NAGGHKLGLELELEA

TRTRPLEQKLISEEDLAANDILDYKDDDDKV

Restriction Sites: SgfI-MluI

Cloning Scheme:

Cloning sites used for ORF Shuttling:



* The last codon before the Stop codon of the ORF

ACCN: NM_011695

ORF Size: 888 bp

OTI Disclaimer: The molecular sequence of this clone aligns with the gene accession number as a point of reference only. However, individual transcript sequences of the same gene can differ through naturally occurring variations (e.g. polymorphisms), each with its own valid existence. This clone is substantially in agreement with the reference, but a complete review of all prevailing variants is recommended prior to use. [More info](#)

OTI Annotation: This clone was engineered to express the complete ORF with an expression tag. Expression varies depending on the nature of the gene.

Components: The ORF clone is ion-exchange column purified and shipped in a 2D barcoded Matrix tube containing 10ug of transfection-ready, dried plasmid DNA (reconstitute with 100 ul of water).

Reconstitution Method:

1. Centrifuge at 5,000xg for 5min.
2. Carefully open the tube and add 100ul of sterile water to dissolve the DNA.
3. Close the tube and incubate for 10 minutes at room temperature.
4. Briefly vortex the tube and then do a quick spin (less than 5000xg) to concentrate the liquid at the bottom.
5. Store the suspended plasmid at -20°C. The DNA is stable for at least one year from date of shipping when stored at -20°C.

RefSeq: [NM_011695.1](#), [NM_011695.2](#), [NP_035825.1](#)

RefSeq Size: 1662 bp

RefSeq ORF: 888 bp

Locus ID: 22334

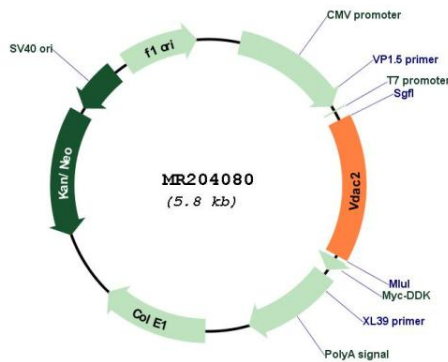
UniProt ID: [Q60930](#)

Cytogenetics: 14 11.91 cM

MW: 31.7 kDa

Gene Summary: Forms a channel through the mitochondrial outer membrane that allows diffusion of small hydrophilic molecules. The channel adopts an open conformation at low or zero membrane potential and a closed conformation at potentials above 30-40 mV. The open state has a weak anion selectivity whereas the closed state is cation-selective (By similarity).[UniProtKB/Swiss-Prot Function]

Product images:



Circular map for MR204080