

## Product datasheet for MR204065

### Gem (NM\_010276) Mouse Tagged ORF Clone

#### Product data:

Product Type:	Expression Plasmids
Product Name:	Gem (NM_010276) Mouse Tagged ORF Clone
Tag:	Myc-DDK
Symbol:	Gem
Synonyms:	AV020497
Mammalian Cell Selection:	Neomycin
Vector:	pCMV6-Entry (PS100001)
E. coli Selection:	Kanamycin (25 ug/mL)
ORF Nucleotide Sequence:	>MR204065 ORF sequence Red=Cloning site Blue=ORF Green=Tags(s)

TTTTGTAATACGACTCACTATAGGGCGGCCGGAATTCGTCGACTGGATCCGGTACCGAGGAGATCTGCC  
GCC**CGCATCGCC**

ATGACTCTGAATAATGTCACCATGCGCCAAGGCACTGTGGGCATGCAGCCACAGCAGCGCTGGAGTATCC  
CTGCTGATGCCAGGCATCTGATGGTCCAGAAGGATCCCCACCCCTGCAACCTCCGAAACCGCCACTCTAC  
TGCTCCGGAAGAGCACTGCCGGCGGAGCTGGTCTGCGACTCCACAGACTCGGTCATCTCTTCTGAGTCT  
GGAAACACCTACTACCGAGTAGTGCTTATAGGGGAGCAAGGAGTGGCAAGTCCACCCTGGCCAACATCT  
TTGCAGGTGTGCATGACAGCATGGACAGCGACTGTGAGGTCTTGGGAGAAGATACATATGAGCGTACCCCT  
GGTCGTTGACGGAGAGAGTGCAACCATTATCCTCCTGGACATGTGGGAAAATAAGGGGGAGAACGAATGG  
CTCCATGACCACTGCATGCAGGTCGGGGATGCCTATCTGATCGTCTACTCTATCACAGACCGTGCAGCT  
TCGAGAAGGCATCTGAGCTGAGGATTGAGCTCCGCAGGGCCCGGCAGACAGAAGACATTCCTATAATTTT  
GGTTGGCAACAAAAGCGACTTAGTGCGGTGTCGAGAAGTGCTGTGTGCAGAAGGGAGAGCTTGTGCTGTG  
GTGTTGCGACTGCAAAATTCATCGAGACCTCTGCGGCTGTGCAGCACAACGTGAAGGAACGTGTTGAGGGCA  
TTGTGCGACAGGTGCGCCTGCGCAGGGACAGCAAGGAGAAGAATGAGAGGAGGCTGGCCTACCAGAAGAG  
GCGGGAGAGCATTCCCAGGAAAGCCAGGCGCTTCTGGGCAAAATGTGGCAAAAACAACAAGAACATG  
GCTTTCAAGCTCAAGTCAAAATCCTGCCATGACCTGTCTGTGCTC

**ACGCGT**ACGCGGGCCGCTCGAGCAGAAACTCATCTCAGAAGAGGATCTGGCAGCAAATGATATCCTGGATT  
ACAAGGATGACGACGATAAGGTTTAA



[View online »](#)

**Protein Sequence:** >MR204065 protein sequence  
Red=Cloning site Green=Tags(s)

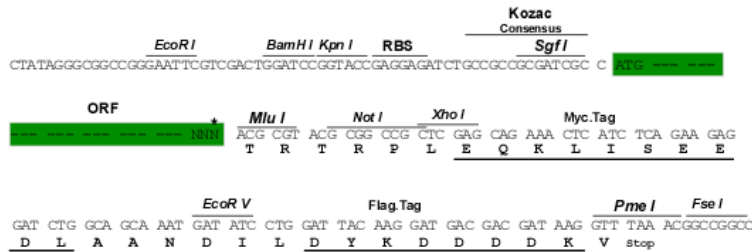
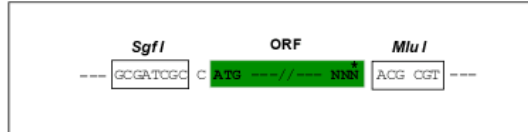
MTLNNVTMRQGTVGMQPQRWSIPADARHLMVQKDPHPCNLRNRHSTAPEEHCRRSWSSDSTDSVISES  
 GNTYYRVVLI GEQVGVKSTLANIFAGVHDSMDSCEVLGEDTYERTLVVDGESATII LDMWENKGENEW  
 LHDHMQVGDAYLIVYSITDRASF EKAS ELRIQLRRARQTEDIPIILVGNKSDLVRCREVSVSEGRACAV  
 VFDCKFIETSAAVQHNVKELFEGIVRQVRLRRDSKEKNERRLAYQKRRESIPRKARRFWGKIVAKNNKNM  
 AFKLKSKSCHDLSVL

TRTRPLEQKLISEEDLAANDILDYKDDDDKV

**Restriction Sites:** SgfI-MluI

**Cloning Scheme:**

Cloning sites used for ORF Shuttling:



\* The last codon before the Stop codon of the ORF

**ACCN:** NM\_010276

**ORF Size:** 888 bp

**OTI Disclaimer:** The molecular sequence of this clone aligns with the gene accession number as a point of reference only. However, individual transcript sequences of the same gene can differ through naturally occurring variations (e.g. polymorphisms), each with its own valid existence. This clone is substantially in agreement with the reference, but a complete review of all prevailing variants is recommended prior to use. [More info](#)

**OTI Annotation:** This clone was engineered to express the complete ORF with an expression tag. Expression varies depending on the nature of the gene.

**Components:** The ORF clone is ion-exchange column purified and shipped in a 2D barcoded Matrix tube containing 10ug of transfection-ready, dried plasmid DNA (reconstitute with 100 ul of water).

**Reconstitution Method:**

1. Centrifuge at 5,000xg for 5min.
2. Carefully open the tube and add 100ul of sterile water to dissolve the DNA.
3. Close the tube and incubate for 10 minutes at room temperature.
4. Briefly vortex the tube and then do a quick spin (less than 5000xg) to concentrate the liquid at the bottom.
5. Store the suspended plasmid at -20°C. The DNA is stable for at least one year from date of shipping when stored at -20°C.

**RefSeq:** [NM\\_010276.4](#)

**RefSeq Size:** 2257 bp

**RefSeq ORF:** 888 bp

**Locus ID:** 14579

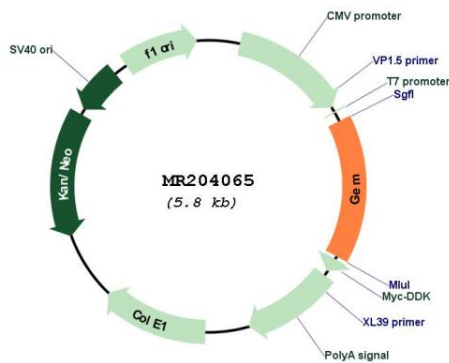
**UniProt ID:** [P55041](#)

**Cytogenetics:** 4 5.34 cM

**MW:** 33.7 kDa

**Gene Summary:** Could be a regulatory protein, possibly participating in receptor-mediated signal transduction at the plasma membrane. Has guanine nucleotide-binding activity but undetectable intrinsic GTPase activity.[UniProtKB/Swiss-Prot Function]

**Product images:**



Circular map for MR204065