

Product datasheet for MR204058

Slamf7 (BC011154) Mouse Tagged ORF Clone

Product data:

Product Type:	Expression Plasmids
Product Name:	Slamf7 (BC011154) Mouse Tagged ORF Clone
Tag:	Myc-DDK
Symbol:	Slamf7
Synonyms:	19A, CS1, 19A24, CRACC
Mammalian Cell Selection:	Neomycin
Vector:	pCMV6-Entry (PS100001)
E. coli Selection:	Kanamycin (25 ug/mL)
ORF Nucleotide Sequence:	>MR204058 ORF sequence Red=Cloning site Blue=ORF Green=Tags(s)

TTTTGTAATACGACTCACTATAGGGCGGCCGGAATTCGTCGACTGGATCCGGTACCGAGGAGATCTGCC
GCC**CGATCGCC**

ATGGCTCGTTTCTCAACGTACATCATCTTTACCTCTGTCCTCTGTCAGCTAACAGTCACAGCAGCTTCTG
GAACTCTGAAGAAGGTGGCCGGTGCCCTTGATGGATCTGTGACATTCACCTCTGAATATCACTGAAATAAA
GGTTGACTATGTTGTATGGACGTTCAACACATTCTTTCTGCCATGGTAAAAAAGACGGCGTTACATCA
CAAAGTAGTAACAAAGAAAGGATAGTCTTCCAGATGGACTCTACTCCATGAAGCTCAGCCAATTGAAGA
AGAATGACTCTGGAGCCTACCGTGCAGAGATTTACAGTACATCGAGTCAGGCTTCTTAATCCAGGAGTA
TGTGCTGCATGTCTACAAGCATTTGTCAAGGCCCAAGGTACCATAGATCGGCAAAGCAACAAGAATGGC
ACCTGCCTAATCAATCTGACATGTTCCACGGATCAGGACGGGGAGAATGTAACCTACAGCTGGAAAAGCTG
TGGGGCAGGGGACAATCAGTTTCATGATGGTGCCACCCTCTCCATCGCCTGGAGATCAGGAGAGAAAAGA
CCAGGCCTTAACATGCATGGCCAGGAATCCAGTCAGCAACAGTTTCTCAACCCCGTCTTTCCCAAGAG
CTCTGTGAAGATGCTGCCACGGATCTAACTTCACTCAGGGGCATCCTATACATCCTGTGCTTCTCAGCAG
TGCTCATCCTATTTGCTGTCTTGCTGACTATTTTTCATACTACGTGGATAAAGAAAAGAAAAGAAAGAA
GACCAGAAGAAGATGCACCAAACACATTTTATCCACTGTGCAGATCCCCAAAGTGGTAAAGAGTCCCAG
CTCCCTGCCTGCAAAGCCACTCGTGCCAAGGTCATTAAGCTT

ACGCGTACGCGGCCGCTCGAGCAGAAACTCATCTCAGAAGAGGATCTGGCAGCAAATGATATCCTGGATT
ACAAGGATGACGACGATAAGGTTTAA



[View online »](#)

Protein Sequence: >MR204058 protein sequence
Red=Cloning site Green=Tags(s)

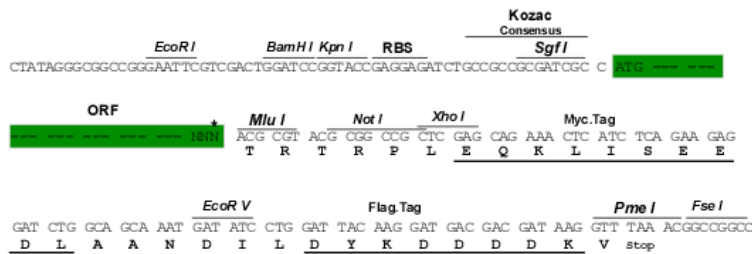
MARFSTYIIFTSVLCQLTVTAASGTLKKVAGALDGSVTFNLNITEIKVDYVVWTFNTFFLAMVKKDGVTS
 QSSNKERIVFPDGLYSMKLSQLKKND SGAYRAE IYSTSSQASLIQEYVLHVYKHL SRPKVTIDRQSNKNG
 TCVINLTCSTDQDGENVTYSWKAVGQGDNQFHDGATLSIAWRSGEKDQALTCMARNPVSNSFSTPVFPQK
 LCEDAATDLTSLRGILYL CFSAVLILFAVLLTIFHTTWIKKRKEKTRRRRCKTHILFHCADPQSGKESQ
 LPACKATRAKVIKL

TRTRPLEQKLISEEDLAANDILDYKDDDDKV

Restriction Sites: SgfI-MluI

Cloning Scheme:

Cloning sites used for ORF Shuttling:



* The last codon before the Stop codon of the ORF

ACCN: BC011154

ORF Size: 882 bp

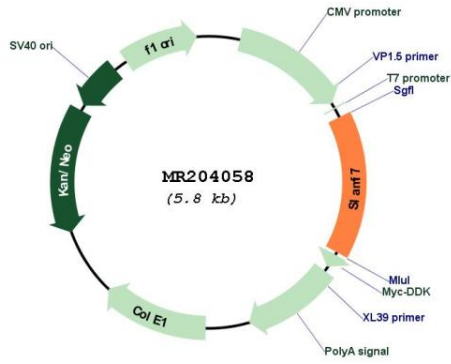
OTI Disclaimer: The molecular sequence of this clone aligns with the gene accession number as a point of reference only. However, individual transcript sequences of the same gene can differ through naturally occurring variations (e.g. polymorphisms), each with its own valid existence. This clone is substantially in agreement with the reference, but a complete review of all prevailing variants is recommended prior to use. [More info](#)

OTI Annotation: This clone was engineered to express the complete ORF with an expression tag. Expression varies depending on the nature of the gene.

Components: The ORF clone is ion-exchange column purified and shipped in a 2D barcoded Matrix tube containing 10ug of transfection-ready, dried plasmid DNA (reconstitute with 100 ul of water).

Reconstitution Method:	<ol style="list-style-type: none">1. Centrifuge at 5,000xg for 5min.2. Carefully open the tube and add 100ul of sterile water to dissolve the DNA.3. Close the tube and incubate for 10 minutes at room temperature.4. Briefly vortex the tube and then do a quick spin (less than 5000xg) to concentrate the liquid at the bottom.5. Store the suspended plasmid at -20°C. The DNA is stable for at least one year from date of shipping when stored at -20°C.
RefSeq:	<u>BC011154</u> , <u>AAH11154</u>
RefSeq Size:	1373 bp
RefSeq ORF:	884 bp
Locus ID:	75345
Cytogenetics:	1 H3
MW:	32.8 kDa
Gene Summary:	<p>Self-ligand receptor of the signaling lymphocytic activation molecule (SLAM) family. SLAM receptors triggered by homo- or heterotypic cell-cell interactions are modulating the activation and differentiation of a wide variety of immune cells and thus are involved in the regulation and interconnection of both innate and adaptive immune response. Activities are controlled by presence or absence of small cytoplasmic adapter proteins, SH2D1A/SAP and/or SH2D1B/EAT-2 (PubMed:19648922). Mediates natural killer (NK) cell activation through a SH2D1A-independent extracellular signal-regulated ERK-mediated pathway (By similarity). Positively regulates NK cell functions by a mechanism dependent on the adapter SH2D1B. In addition to heterotypic NK cells-target cells interactions also homotypic interactions between NK cells may contribute to activation. However, in the absence of SH2D1B, inhibits NK cell function. Acts also inhibitory in T-cells (PubMed:19151721). May play a role in lymphocyte adhesion (By similarity). In LPS-activated monocytes negatively regulates production of proinflammatory cytokines (By similarity).[UniProtKB/Swiss-Prot Function]</p>

Product images:



Circular map for MR204058