

## Product datasheet for MR204057

### 1700020D05Rik (NM\_023781) Mouse Tagged ORF Clone

#### Product data:

|                           |   |
|---------------------------|---|
| Product Type:             | Expression Plasmids   |
| Product Name:             | 1700020D05Rik (NM_023781) Mouse Tagged ORF Clone                  |
| Tag:                      | Myc-DDK   |
| Symbol:                   | 1700020D05Rik   |
| Synonyms:                 | mage-g2   |
| Mammalian Cell Selection: | Neomycin  |
| Vector:                   | pCMV6-Entry (PS100001)  |
| E. coli Selection:        | Kanamycin (25 ug/mL)  |
| ORF Nucleotide Sequence:  | >MR204057 ORF sequence<br>Red=Cloning site Blue=ORF Green=Tags(s) |

TTTTGTAATACGACTCACTATAGGGCGCCGGGAATTCGTCGACTGGATCCGGTACCGAGGAGATCTGCC  
GCC**CGGATCGCC**

ATGAGCGTCTCTCCGCTGGTCACATGTTGCAAAAAACGAGGAGCAGGAGCCACCCTGGTGCCAGCTAT  
GGAGCCCCAGCGACTGCTGCCCGGTGTCTCTAGAGAGATCGCGAGAGCGTCTGGACACCCTGATGCCTC  
GCAGGACACCCAGGCACCCCGTCGCAAGCTTTCGTAGGTCCAGGCCACCTCTGCTCCGGAGCTCTGG  
ACCCAGAAGCAGCTGGAGCTTAAGGTGGCAGAGCTGGTGCAGTCTTGTGATTAAGACCAGAGGAAGA  
TTCCCATCAAGCAGTCAGGGATCATGAAACATGTCGTCCGAGACTACAAAAACATCTTCCAGACCTGCT  
TAAACTGGCTGCAGAACGGCTCCACTACGTGTTCCGGTACAAGCTGGTGGAACTCGACCCCAAGAGCAAT  
GCCTACATCCTCATCAACGCCCTGGAGCCAGTGGCAAGGATGGTGAAGTGAAGGCTACAGAGAACGC  
CCACCACCGCCCTCCTGATGATTATTTAGGGCTCATCTTAATGAATGGCCACAGCATCCAGAAAAACGA  
TGTCTGGTGTCTTCTACGTGTTGGGGGTGTATCCACCAAGAAGCATTAGTTTTCGGCTATCCGAAG  
AAACTCATTACTGAAGACTTCGTGAAACAGCGTTACCTGGAGTACCGTCGGATACCCACACAGATCCTG  
TGGACTGTGAGCTCCAGTGGGTCCGCGAGCAAATCTGAAACCAGCAAGATGAAAGTCTTAAGTTTGT  
AGCCAAAATCCATAATCAAGATCCCAAGGACTGGCCCACTCAGTACTGTGAAGCTTTGGCGGATGAGCAG  
CGTAGGGTCAGACCAGAGCCAAATGGTCCAGCTCTGACCTCT

**ACGCGT**ACGCGGCCGCTCGAGCAGAAACTCATCTCAGAAGAGGATCTGGCAGCAAATGATATCCTGGATT  
ACAAGGATGACGACGATAAGGTTTAA



[View online »](#)

**Protein Sequence:** >MR204057 protein sequence  
 Red=Cloning site Green=Tags(s)

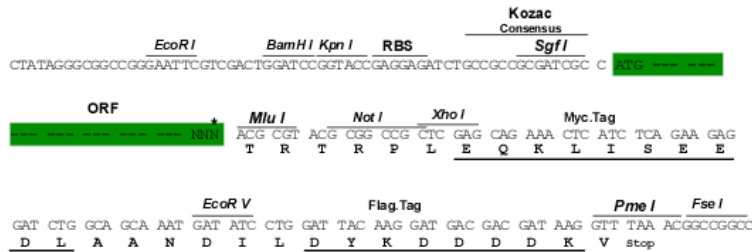
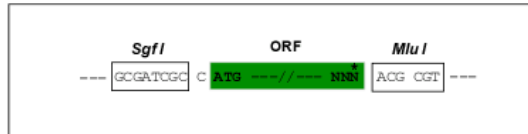
MSVSPPGHMLQKTRSRSHPGAQLWSPSDCCPGVSREIARASGHPDASQDTPGTPSPSFRQVQATSAPELW  
 TQKQLELKV AELVQFLLIKDQRKIPIKQSGIMKHVVRDYKNI FPDLLKLAERLHYVFGYKLVDPKSN  
 AYILINALEPVGKDGELRGYQRTPTTGLLMIILGLILMNGHSIPENDVWCFLLRRLGVYPTKKHSVFGYPK  
 KLITEDFVKQRYLEYRRI PHTDPVDCELQWGPANLETSKMKVLKFKVAKIHNQDPKDWPTQYCEALADEQ  
 RRV RPEPNPALTS

TRTRPLEQKLISEEDLAANDILDYKDDDDKV

**Restriction Sites:** SgfI-MluI

**Cloning Scheme:**

Cloning sites used for ORF Shuttling:



\* The last codon before the Stop codon of the ORF

**ACCN:** NM\_023781

**ORF Size:** 885 bp

**OTI Disclaimer:** The molecular sequence of this clone aligns with the gene accession number as a point of reference only. However, individual transcript sequences of the same gene can differ through naturally occurring variations (e.g. polymorphisms), each with its own valid existence. This clone is substantially in agreement with the reference, but a complete review of all prevailing variants is recommended prior to use. [More info](#)

**OTI Annotation:** This clone was engineered to express the complete ORF with an expression tag. Expression varies depending on the nature of the gene.

**Components:** The ORF clone is ion-exchange column purified and shipped in a 2D barcoded Matrix tube containing 10ug of transfection-ready, dried plasmid DNA (reconstitute with 100 ul of water).

**Reconstitution Method:**

1. Centrifuge at 5,000xg for 5min.
2. Carefully open the tube and add 100ul of sterile water to dissolve the DNA.
3. Close the tube and incubate for 10 minutes at room temperature.
4. Briefly vortex the tube and then do a quick spin (less than 5000xg) to concentrate the liquid at the bottom.
5. Store the suspended plasmid at -20°C. The DNA is stable for at least one year from date of shipping when stored at -20°C.

**RefSeq:** [NM\\_023781.5](#), [NP\\_076270.3](#)

**RefSeq Size:** 1087 bp

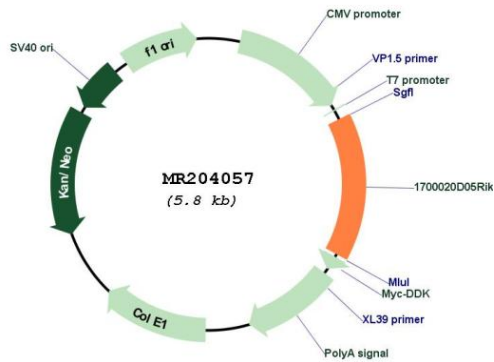
**RefSeq ORF:** 885 bp

**Locus ID:** 75555

**Cytogenetics:** 19 A

**MW:** 33.4 kDa

**Product images:**



Circular map for MR204057