

## Product datasheet for **MR204047**

### Endog (NM\_007931) Mouse Tagged ORF Clone

#### Product data:

|                           |   |
|---------------------------|---|
| Product Type:             | Expression Plasmids   |
| Product Name:             | Endog (NM_007931) Mouse Tagged ORF Clone                                    |
| Tag:                      | Myc-DDK   |
| Symbol:                   | Endog   |
| Mammalian Cell Selection: | Neomycin  |
| Vector:                   | pCMV6-Entry (PS100001)  |
| E. coli Selection:        | Kanamycin (25 ug/mL)  |
| ORF Nucleotide Sequence:  | >MR204047 representing NM_007931<br>Red=Cloning site Blue=ORF Green=Tags(s) |

TTTTGTAATACGACTCACTATAGGGCGGCCGGAATTCGTCGACTGGATCCGGTACCGAGGAGATCTGCC  
GCC**CGATCGCC**

ATGCGCGCGTGCGGGCCGGCTGACCCTAGCGCTGGGCGCGGGCTGGGCGCCGCGGCAGAGCATTGGC  
GGCGGCGGGAGGGCAAAGCGCCGGGGCTGCTGGGCCGAGTGCCATTGTTGCCGGTGGTCGCGGCCGATCT  
TCCCGCGCTGCCGGGGGACCGCGGGCGGCACCGGGAACTGGCCAAGTACGGGCTGCCCGCGTGGCG  
CAGCTCCGGAGCCGCGAGTCTACGTGCTTAGCTACGACCCGCGCACGCGGTGCGCTCTGGGTGTTGG  
AGCAGCTGAGGCCAGAGCGGCTCCGTGGCGACGGGGACCGTAGCGCTGCGACTCCGCGAGGATGACTC  
TGTGCACGCGTACCACCGGCCACCAATGCGGACTACCGCGCAGTGGCTTTGACCGCGCCATTTGGCC  
GCCGCCGCAACCACCGCTGGAGTCAGCGGGCCATGGACGACACCTTCTACCTGAGCAACGTAGCGCCTC  
AGGTGCCACACCTCAACCAGAATGCCTGGAACAACCTTGAGAGGTACAGCCGAGCTTGACGCGAACTTA  
CCAAAATGTCTATGTCTGCACGGGGCCGCTTTTCTGCCAGGACCGAGGCTGATGGGAAGTCTATGTG  
AAGTACCAGGTTATTGGGAAGAACCACGTGGCAGTGCCACACACTTCTCAAGGTGCTGATCCTGGAGG  
CAGCCGGTGGGCAGATCGAGCTACGTTCTACGTGATGCCAATGCCCGTGGATGAGACCATCCCTCT  
GGAGCGGTTCTGGTCCCATCGAGAGCATCGAGCGGGCTCGGGATTGCTCTTCGTGCCAATATTCTG  
GCTCGAGCTGAAACCTCAAGGCTATCACTGCTGGCAGCAAG

AG**CGGACCG**ACGCGTACGCGGCCGCTCGAGCAGAACTCATCTCAGAAGAGGATCTGGCAGCAAATGATATCC  
TGGATTACAAGGATGACGACGATAAGGTTAA



[View online »](#)

**Protein Sequence:** >MR204047 representing NM\_007931  
Red=Cloning site Green=Tags(s)

MRALRAGLTLALGAGLGAAAHHRRREGKAPGLLGRVPLL PVVAADLPALPGGPAGGTGELAKYGLPGVA  
 QLRRESYVLSYDPRTRGALWVLEQLRPERLRGDGDRSACDFREDDSVHAYHRATNADYRGSFDRGH  
 LA  
 AAANHRWSQRAMDDTFYLSNVAPQVPHLNQNAWNNLERYSRSLTRTYQNVVYVCTGPLFLPRTEADGKSYV  
 KYQVIGKNHVAVPTHFFKVLILEAAGGQIELRSYVMPNAPVDETIPLERFLVPIESIERASGLLFV  
 PNIL  
 ARAGNLKAITAGSK

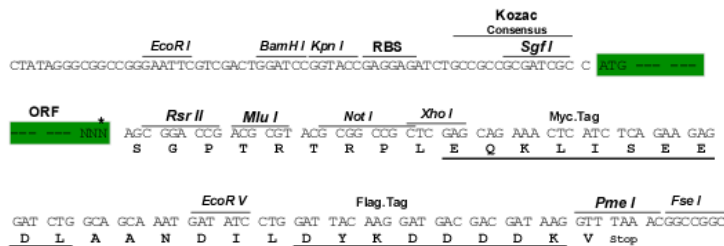
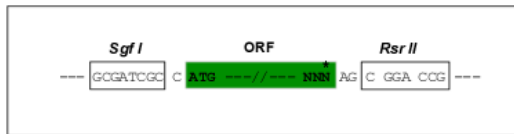
SGPTRTRRLEQKLISEEDLAANDILDYKDDDDKV

**Chromatograms:** [https://cdn.origene.com/chromatograms/ja1632\\_d10.zip](https://cdn.origene.com/chromatograms/ja1632_d10.zip)

**Restriction Sites:** SgfI-RsrII

**Cloning Scheme:**

Cloning sites used for ORF Shuttling:



\* The last codon before the Stop codon of the ORF

**ACCN:** NM\_007931

**ORF Size:** 882 bp

**OTI Disclaimer:** The molecular sequence of this clone aligns with the gene accession number as a point of reference only. However, individual transcript sequences of the same gene can differ through naturally occurring variations (e.g. polymorphisms), each with its own valid existence. This clone is substantially in agreement with the reference, but a complete review of all prevailing variants is recommended prior to use. [More info](#)

**OTI Annotation:** This clone was engineered to express the complete ORF with an expression tag. Expression varies depending on the nature of the gene.

**Components:** The ORF clone is ion-exchange column purified and shipped in a 2D barcoded Matrix tube containing 10ug of transfection-ready, dried plasmid DNA (reconstitute with 100 ul of water).

**Reconstitution Method:**

1. Centrifuge at 5,000xg for 5min.
2. Carefully open the tube and add 100ul of sterile water to dissolve the DNA.
3. Close the tube and incubate for 10 minutes at room temperature.
4. Briefly vortex the tube and then do a quick spin (less than 5000xg) to concentrate the liquid at the bottom.
5. Store the suspended plasmid at -20°C. The DNA is stable for at least one year from date of shipping when stored at -20°C.

**RefSeq:** [NM\\_007931.1](#), [NP\\_031957.1](#)

**RefSeq Size:** 1032 bp

**RefSeq ORF:** 885 bp

**Locus ID:** 13804

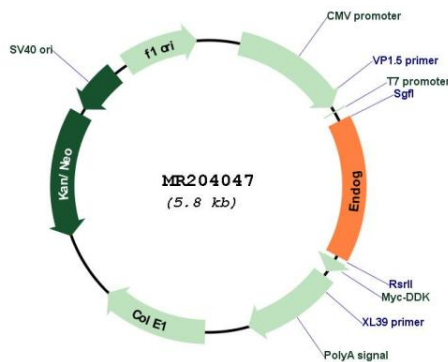
**UniProt ID:** [O08600](#)

**Cytogenetics:** 2 B

**MW:** 32.6 kDa

**Gene Summary:** Cleaves DNA at double-stranded (DG)n.(DC)n and at single-stranded (DC)n tracts. In addition to deoxyribonuclease activities, also has ribonuclease (RNase) and RNase H activities. Capable of generating the RNA primers required by DNA polymerase gamma to initiate replication of mitochondrial DNA (By similarity).[UniProtKB/Swiss-Prot Function]

### Product images:



Circular map for MR204047