

## Product datasheet for MR203971

### Rbm13 (BC013079) Mouse Tagged ORF Clone

#### Product data:

Product Type:	Expression Plasmids
Product Name:	Rbm13 (BC013079) Mouse Tagged ORF Clone
Tag:	Myc-DDK
Symbol:	Rbm13
Synonyms:	2600016B03Rik; AI314911; Rbm13
Mammalian Cell Selection:	Neomycin
Vector:	pCMV6-Entry (PS100001)
E. coli Selection:	Kanamycin (25 ug/mL)
ORF Nucleotide Sequence:	>MR203971 ORF sequence Red=Cloning site Blue=ORF Green=Tags(s)

TTTTGTAATACGACTCACTATAGGGCGGCCGGAATTCGTCGACTGGATCCGGTACCGAGGAGATCTGCC  
GCC**CGGATCGCC**

ATGCAGTCGGACGACGTAATCTGGAATACACTAGGAAACAAGCAGTTTTGTTCTTTCAAATAAGAACCA  
AGACCCAGGGCTTCTGCAGAAATGAATACAGTCTGACTGGTCTGTGCAATCGGTCGTCTGTCCCCTGGC  
AAATAGTCAGTATGCTACCATTAAAGAAGAGAAAGGGCAGTGCTACCTGTACATGAAGGTTATAGAGCGA  
GCAGCTTTCCCAGGCGTCTCTGGGAACGGTCCGGCTTAGTAAAACTATGAAAAAGCACTGGAACAAA  
TAGATGAAAATCTGATCTATTGGCCCCGCTTTATCAGACACAAAATGTAAGCAGAGGTTTACCAAGATAAC  
CCAGTACCTGATTCGAATCAGAAAACCTTACACTGAAGCGACAGAGGAAGCTTGTTCTTTGAGTAAGAAG  
GTTGAACGAAGGGAAAAACGAAGAGAGGAAAAAGCATTAAATAGCTGCCAGCTGGACAATGCTATTGAGA  
AGGAATTGCTGGAGAGACTGAAACAAGATACGTATGGCGACATCTACAACCTCCCATCCATGCCTTCGA  
CAAGGCCCTAGAGAAACAGGAAGCAGAAAGTACTCTGAAGATGAAGACGAAGAAGAGGATGTGGGGAAA  
AGAGAGTTTGTAGAAGATGAGGAGGTGGAGGAGAGTGACCTGAGTGACTTTGAGGATATGGATAAAGTGA  
ATACTGACAGTGAGGAAGACCAGGATGATGAATCCTCCAATGAAGAAGAGGCTCATAAGGCTAAGCACAA  
AGGCAAAGCACCTTTGAAAGGACCTTTACGGAACAAAACGGGCCTATGTGGAATAGAGTATGAACAGGAG  
ACAGAGCCCATGGCCAAAGTCAAAGCCACA

**ACGCGT**ACGCGGCCGCTCGAGCAGAAACTCATCTCAGAAGAGGATCTGGCAGCAAATGATATCCTGGATT  
ACAAGGATGACGACGATAAGGTTTAA



[View online »](#)

**Protein Sequence:** >MR203971 protein sequence  
Red=Cloning site Green=Tags(s)

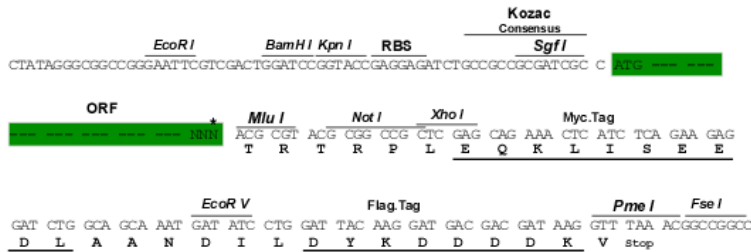
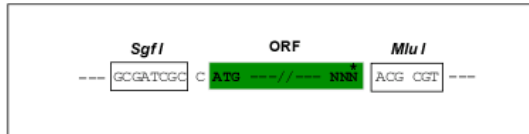
MQSDDDVIWNTLGNKQFCSEFKIRTKTQGFRCNEYSLTGLCNRSSCPLANSQYATIKEEKGCYLYMKVIER  
 AAFPRRLWERVRLSKNYEKALEQIDENLIYWPRFIRHKCKQRFTKITQYLIRIRKLT LKRQRKL VPLSKK  
 VERREKRREEKALIAAQLDNAIEKELLERLKQDTYGDIYNFPIHAFDKALEKQEAESDSEDEDEEEDVVGK  
 REFVEDEEVEESDLDFEDMDKLN TDSEEDQDDESSNEEEAHKAKHKGKAPLKGPLRKKRAYVEIEYEQE  
 TEPMAKVKAT

TRTRPLEQKLISEEDLAANDILDYKDDDDKV

**Restriction Sites:** SgfI-MluI

**Cloning Scheme:**

Cloning sites used for ORF Shuttling:



\* The last codon before the Stop codon of the ORF

**ACCN:** BC013079

**ORF Size:** 870 bp

**OTI Disclaimer:** The molecular sequence of this clone aligns with the gene accession number as a point of reference only. However, individual transcript sequences of the same gene can differ through naturally occurring variations (e.g. polymorphisms), each with its own valid existence. This clone is substantially in agreement with the reference, but a complete review of all prevailing variants is recommended prior to use. [More info](#)

**OTI Annotation:** This clone was engineered to express the complete ORF with an expression tag. Expression varies depending on the nature of the gene.

**Components:** The ORF clone is ion-exchange column purified and shipped in a 2D barcoded Matrix tube containing 10ug of transfection-ready, dried plasmid DNA (reconstitute with 100 ul of water).

**Reconstitution Method:**

1. Centrifuge at 5,000xg for 5min.
2. Carefully open the tube and add 100ul of sterile water to dissolve the DNA.
3. Close the tube and incubate for 10 minutes at room temperature.
4. Briefly vortex the tube and then do a quick spin (less than 5000xg) to concentrate the liquid at the bottom.
5. Store the suspended plasmid at -20°C. The DNA is stable for at least one year from date of shipping when stored at -20°C.

**RefSeq:** [BC013079](#), [AAH13079](#)

**RefSeq Size:** 1870 bp

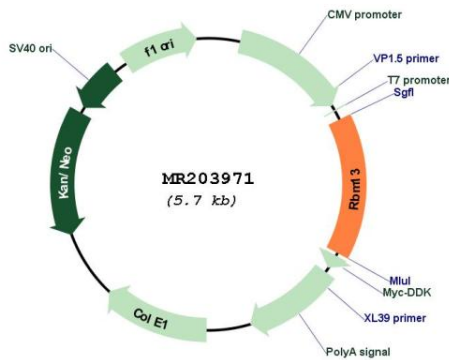
**RefSeq ORF:** 872 bp

**Locus ID:** 67920

**Cytogenetics:** 8 A3

**MW:** 34.4 kDa

**Product images:**



Circular map for MR203971