

Product datasheet for MR203955

Lix1 (NM_025681) Mouse Tagged ORF Clone

Product data:

Product Type:	Expression Plasmids
Product Name:	Lix1 (NM_025681) Mouse Tagged ORF Clone
Tag:	Myc-DDK
Symbol:	Lix1
Synonyms:	5730466L18Rik
Mammalian Cell Selection:	Neomycin
Vector:	pCMV6-Entry (PS100001)
E. coli Selection:	Kanamycin (25 ug/mL)
ORF Nucleotide Sequence:	>MR203955 ORF sequence Red=Cloning site Blue=ORF Green=Tags(s)

TTTTGTAATACGACTCACTATAGGGCGGCCGGAATTCGTCGACTGGATCCGGTACCGAGGAGATCTGCC
GCC**CGGATCGCC**

ATGGACAGAACCTTGAATCTCTGAGGCACATCATTGCCAAGCCTTGCCTCACAGAGACCCGGCTTTGG
TCTTCAAAGACTGAATGTTGTGTCAATGTTACAGGAATTTGGGAAAGCAAGCAGCAGCAGAAAGCCAC
CTTCTCCAGTGAGGGACTGGTGGTCTATGAGTCAATGCCTTCTCTGGGCCTCCCTTTGTGAGCTATGTG
ACTCTCCCTGGAGGGAGCTGCTTTGGCAACTTTCAGTGTCTTAAGTAGAGCTGAGGCCAGCGGGGATG
CTGCTAAAGTGGCGCTCATCAACTCTCTTCAATGAGCTACCCTCCCGAAGGATCACCAAGGAGTTCAT
CATGGAGAGTGTTCAAGGAAGCAGTAGCCTCCACCAGGGGCACGTTAGATGATGCGGATGACCAAGCACA
AGTGTGGGAGCCTATCACTACATGCTGGAGTCAAACATGGGGAAGACTATGCTGGAGTTTCAGGAACTAA
TGACCATTTTCCAACACTGCACTGGAATGGAAGCCTGAAAGCCCTCCGTGAAACAAAGTCTCTCGACA
GGAAGTCATCTCCTACTATTCCAATATTCTTTAGATGAAAAGATGCGTAGCCACATGGCCCTGGACTGG
ATTATGAAGGAGCGTGAATCACCAGGAATCTCTCTCAAGAGCTGCGTGCAGCCCTAGGGCAGCTGGAGG
AAGCCAGGAAGGCTGGACAAGAAGTACGATTTTACAAAGAAAAAAGAAATCCTGAGCTTGGCCCTGAC
TCAGATCTATAGTGACCTGACCCTTCTCACCCAGTGATGACCAGCTAAGCCTCACGGCTCTGTGTGGC
TATCAT

ACGCGTACGCGGCCGCTCGAGCAGAAACTCATCTCAGAAGAGGATCTGGCAGCAAATGATATCCTGGATT
ACAAGGATGACGACGATAAGGTTTAA



[View online »](#)

Protein Sequence: >MR203955 protein sequence
Red=Cloning site Green=Tags(s)

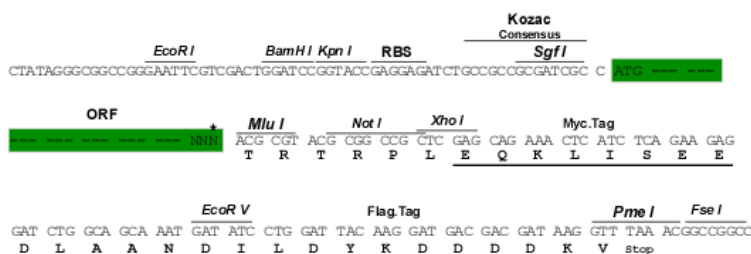
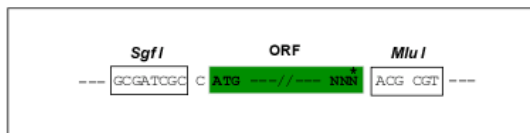
MDRTLES LRHIIA QALPHRDPALVFKDLNVVSM LQEFWESKQQKATFSSEGLVVYESMPSSGPPFVSYV
 TLPGGSCFGNFQCCLSR AEARRDAAKVALINSLFNELPSRRITKEFIMESVQEA VASTRGTLD DDDPST
 SVGAYHYMLESNMGKTML E FQELMTIFQLLHWNGSLKALRET KCSRQEVISYYSQVSLDEKMRSHMALDW
 IMKERESPGILSQELRAALGQLEEAR KAGQELRFYKEKKEILSLALTQIYSDPDPSSPDDQLSLTALCG
 YH

TRTRPLEQKLISEEDLAANDILDYKDDDDKV

Restriction Sites: SgfI-MluI

Cloning Scheme:

Cloning sites used for ORF Shuttling:



* The last codon before the Stop codon of the ORF

ACCN: NM_025681

ORF Size: 849 bp

OTI Disclaimer: The molecular sequence of this clone aligns with the gene accession number as a point of reference only. However, individual transcript sequences of the same gene can differ through naturally occurring variations (e.g. polymorphisms), each with its own valid existence. This clone is substantially in agreement with the reference, but a complete review of all prevailing variants is recommended prior to use. [More info](#)

OTI Annotation: This clone was engineered to express the complete ORF with an expression tag. Expression varies depending on the nature of the gene.

Components: The ORF clone is ion-exchange column purified and shipped in a 2D barcoded Matrix tube containing 10ug of transfection-ready, dried plasmid DNA (reconstitute with 100 ul of water).

Reconstitution Method:

1. Centrifuge at 5,000xg for 5min.
2. Carefully open the tube and add 100ul of sterile water to dissolve the DNA.
3. Close the tube and incubate for 10 minutes at room temperature.
4. Briefly vortex the tube and then do a quick spin (less than 5000xg) to concentrate the liquid at the bottom.
5. Store the suspended plasmid at -20°C. The DNA is stable for at least one year from date of shipping when stored at -20°C.

RefSeq: [NM_025681.2](#), [NP_079957.2](#)

RefSeq Size: 3124 bp

RefSeq ORF: 849 bp

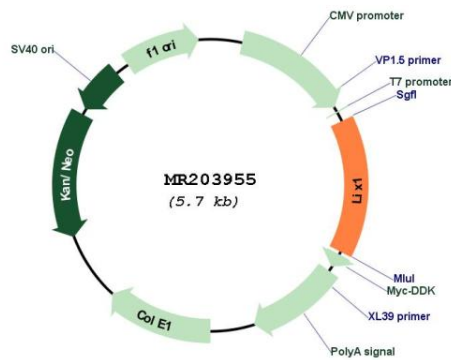
Locus ID: 66643

UniProt ID: [Q6P566](#)

Cytogenetics: 17 A3.1-A3.2

MW: 31.9 kDa

Product images:



Circular map for MR203955