

Product datasheet for MR203943

Gnpda1 (BC014800) Mouse Tagged ORF Clone

Product data:

Product Type:	Expression Plasmids
Product Name:	Gnpda1 (BC014800) Mouse Tagged ORF Clone
Tag:	Myc-DDK
Symbol:	Gnpda1
Synonyms:	GNPDA, oscillin, Gnp1
Mammalian Cell Selection:	Neomycin
Vector:	pCMV6-Entry (PS100001)
E. coli Selection:	Kanamycin (25 ug/mL)
ORF Nucleotide Sequence:	>MR203943 ORF sequence Red=Cloning site Blue=ORF Green=Tags(s)

TTTTGTAATACGACTCACTATAGGGCGGCCGGAATTCGTCGACTGGATCCGGTACCGAGGAGATCTGCC
GCC**CGATCGCC**

ATGAAGCTCATTATCCTGGAACACTATCCAGGCCAGTGAGTGGGCGGCCAAGTATATTAGGAACCGTA
TCATCCAGTTTAACCCAGGGCCTGACAAGTACTTCACCCTGGGGCTCCCCACTGGGAGCACCCCGTTGG
CTGCTACCAGAAGCTGATCGAGTACTATAAGAATGGGGACCTGTCCTTTCAATATGTGAAAACCTTCAAC
ATGGACGAGTATGTGGTCTTCTCGAGACCACCCAGAGAGTTACCACTCCTTCATGTGGAATAATTCT
TCAAGCACATTGACATCCACCCTGAAAACACCCACATTTTGGATGAAAATGCGGCTGACCTGCAGGCCGA
GTGTGACGCCTTTGAGGAGAAGATCCAGGCTGCCGGAGGGATCGAACTCTTTGTGCGAGGCAATTGGCCCC
GATGGACACATTGCCTTCAATGAGCCAGGCTCCAGCCTGGTGTCCAGGACCCGTGTGAAGACTCTGGCTA
TGGACACCATCGTGGCAACGCTAGGTTCTTTGATGGTGTGATCTTGCCAAGGTGCCACCATTGGCCCTGAC
AGTGGGGGTGGCACTGTGATGGATGCTAAAGAGGTGATGATCCTCATCAGGGCGCTACAAGGCCCTTC
GCTCTGTACAAAGCCATCGAGGAGGGCGTGAACCACATGTGGACGGTGTCCGCCTTTGAGCAGCACCCCC
GCACTGTGTTGTGTGACGAGGACGCCACCTTGAACATAAAAGTGAAGACAGTCAAATATTTCAAAGG
TTAATGCTTGTTCATAACAAGCTGGTGGACCCCTGTACAGTATCAAGGAGAAGGAAATTCAGAAAAGC
CAATCTGCTAAGAAGCCATACAGTGAC

ACGCGTACGCGGCCGCTCGAGCAGAAACTCATCTCAGAAGAGGATCTGGCAGCAAATGATATCCTGGATT
ACAAGGATGACGACGATAAGGTTTAA



[View online »](#)

Protein Sequence: >MR203943 protein sequence
 Red=Cloning site Green=Tags(s)

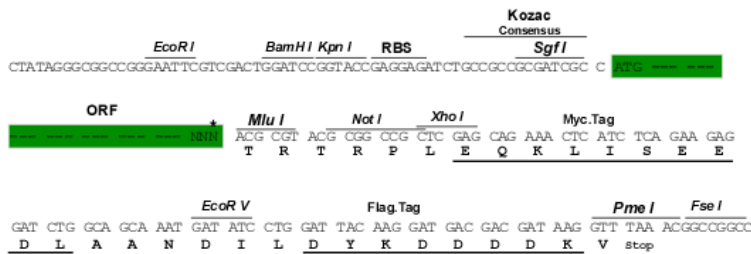
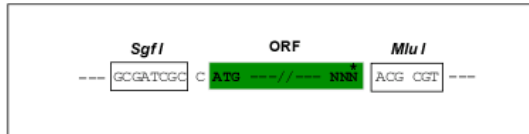
MKLIILEHYSQASEWAAKYIRNRIIQFNPGPKYFTLGLPTGSTPLGICYQKLI EYYKNGDLSFYVKT FN
 MDEYVGLPRDHPE SYH SFMWN NF FKH IDIHPENTHILDGNAADLQAECD AFE EKIQAAGGI E L FVGGI GP
 DGHIAFNEPGSSLVSRTRVKTLAMDITILANARFFDGLAKVPTMALTVGVGTVM D AKEVMILITGAHKAF
 ALYKAIIEEGVNHMWTVS AFQQHPRTVFVCE DATLELKVTKVYFKGLMLVHNKLV D PLYSIKEKEIQKS
 QS AKKPYS D

TRTRPLEQKLISEEDLAANDILDYKDDDDKV

Restriction Sites: SgfI-MluI

Cloning Scheme:

Cloning sites used for ORF Shuttling:



* The last codon before the Stop codon of the ORF

ACCN: BC014800

ORF Size: 867 bp

OTI Disclaimer: The molecular sequence of this clone aligns with the gene accession number as a point of reference only. However, individual transcript sequences of the same gene can differ through naturally occurring variations (e.g. polymorphisms), each with its own valid existence. This clone is substantially in agreement with the reference, but a complete review of all prevailing variants is recommended prior to use. [More info](#)

OTI Annotation: This clone was engineered to express the complete ORF with an expression tag. Expression varies depending on the nature of the gene.

Components: The ORF clone is ion-exchange column purified and shipped in a 2D barcoded Matrix tube containing 10ug of transfection-ready, dried plasmid DNA (reconstitute with 100 ul of water).

Reconstitution Method:

1. Centrifuge at 5,000xg for 5min.
2. Carefully open the tube and add 100ul of sterile water to dissolve the DNA.
3. Close the tube and incubate for 10 minutes at room temperature.
4. Briefly vortex the tube and then do a quick spin (less than 5000xg) to concentrate the liquid at the bottom.
5. Store the suspended plasmid at -20°C. The DNA is stable for at least one year from date of shipping when stored at -20°C.

RefSeq: [BC014800](#), [AAH14800](#)

RefSeq Size: 2222 bp

RefSeq ORF: 869 bp

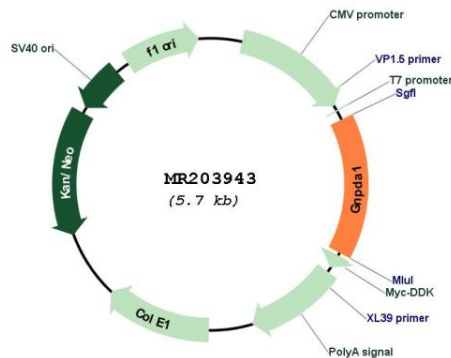
Locus ID: 26384

Cytogenetics: 18 B3

MW: 32.5 kDa

Gene Summary: Seems to trigger calcium oscillations in mammalian eggs. These oscillations serve as the essential trigger for egg activation and early development of the embryo (By similarity). [UniProtKB/Swiss-Prot Function]

Product images:



Circular map for MR203943