

## Product datasheet for **MR203934**

### Stx2 (NM\_007941) Mouse Tagged ORF Clone

#### Product data:

|                           |   |
|---------------------------|---|
| Product Type:             | Expression Plasmids   |
| Product Name:             | Stx2 (NM_007941) Mouse Tagged ORF Clone                           |
| Tag:                      | Myc-DDK   |
| Symbol:                   | Stx2  |
| Synonyms:                 | AW538950; Epim; G1-536-1; repro34; Syn-2                          |
| Mammalian Cell Selection: | Neomycin  |
| Vector:                   | pCMV6-Entry (PS100001)  |
| E. coli Selection:        | Kanamycin (25 ug/mL)  |
| ORF Nucleotide Sequence:  | >MR203934 ORF sequence<br>Red=Cloning site Blue=ORF Green=Tags(s) |

TTTTGTAATACGACTCACTATAGGGCGGCCGGAATTCGTCGACTGGATCCGGTACCGAGGAGATCTGCC  
GCC**CGGATCGCC**

ATGCGGGACCGGCTGCCCGACCTCACGGCGTGTAGGACAAACGACGATGGAGACTGCTGTCGTCATTG  
TGGAGAAGGATCATTTTCATGGACGGTTTCTCCATCAGGTAGAGGAGATTCGAAGCAGCATAGCCAGGAT  
TGCTCAGCATGTAGAAGACGTGAAGAAGAACCACAGCATCATCCTGTCTGCTCCAAACCCAGAAGGAAAA  
ATAAAAGAAGAGCTGGAGGACCTGAACAAAGAGATCAAGAAAACCTGCTAACAGGATCCGGGGCAAGCTGA  
AGTCTATTGAGCAGAGCTGTGATCAGGACGAGAATGGGAACCGAACTTCAGTGGATCTGCGGATACGAAG  
GACCCAGCACTCGGTGCTGTACGGAAGTTTGTGGACGTCATGACAGAATACAATGAAGCGCAGATCCTG  
TTCCGGGAGCGAAGCAAAGGCCGCATCCAGCGCCAGCTGGAGATCACTGGGAGGACCACCACTGACGACG  
AGCTGGAAGAGATGCTGGAGAGCGGGAAGCCGTCATCTTCATCTCGGATATTATACAGATTCACAAAT  
CACTAGGCAAGCTCTCAATGAGATCGAGTCCC GCCACAAAGACATCATGAAGCTGGAGACCAGCATCCGA  
GAGCTGCACGAGATGTTTCATGGATATGGCCATGTTTGTGCGAGACTCAGGGTGAATGGTCAACAACATCG  
AGAGAAATGTGGTGAACCTCTGTAGATTACGTGGAACATGCCAAGGAAGAGACGAAGAAAGCCATCAAATA  
CCAGAGCAAGGCCAGGCCGAAAAAGTGGATAATTGCTGCTGTGGCGGTGGCTGTCTATTGCCGTCCTGGCT  
CTAATCATTGGCTTGTTCGTTGGCAAA

**ACGCGT**ACGCGGCCGCTCGAGCAGAAACTCATCTCAGAAGAGGATCTGGCAGCAAATGATATCCTGGATT  
ACAAGGATGACGACGATAAGGTTTAA



[View online »](#)

**Protein Sequence:** >MR203934 protein sequence  
Red=Cloning site Green=Tags(s)

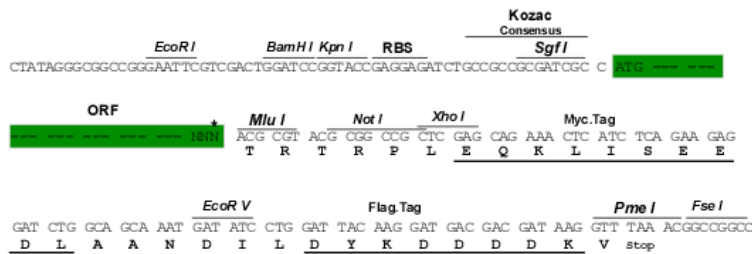
MRDRLPDLTACRTNDDGDTAVVIVEKDFHMDGFFHQVEEIRSSIARIAQHVEDVKKNHSIILSAPNPEGK  
 IKEELEDLNKEIKKTANRIRGKLKSIEQSCDQDENGNRTSVDLRIRRTQHSVLSRKFVDVMTEYNEAQIL  
 FRERSKGRIQRQLEITGRITTTDDELEEMLESKPSIFISDIISDSQITRQALNEIESRHKDIMKLETSIR  
 ELHEMFMDMAMFVETQGEMVNNIERNVNSVDYVEHAKEETKKAIKYQSKARRKKWIIAAVAVAVIAVLA  
 LIIGLSVGK

TRTRPLEQKLISEEDLAANDILDYKDDDDKV

**Restriction Sites:** SgfI-MluI

**Cloning Scheme:**

Cloning sites used for ORF Shuttling:



\* The last codon before the Stop codon of the ORF

**ACCN:** NM\_007941

**ORF Size:** 870 bp

**OTI Disclaimer:** The molecular sequence of this clone aligns with the gene accession number as a point of reference only. However, individual transcript sequences of the same gene can differ through naturally occurring variations (e.g. polymorphisms), each with its own valid existence. This clone is substantially in agreement with the reference, but a complete review of all prevailing variants is recommended prior to use. [More info](#)

**OTI Annotation:** This clone was engineered to express the complete ORF with an expression tag. Expression varies depending on the nature of the gene.

**Components:** The ORF clone is ion-exchange column purified and shipped in a 2D barcoded Matrix tube containing 10ug of transfection-ready, dried plasmid DNA (reconstitute with 100 ul of water).

**Reconstitution Method:**

1. Centrifuge at 5,000xg for 5min.
2. Carefully open the tube and add 100ul of sterile water to dissolve the DNA.
3. Close the tube and incubate for 10 minutes at room temperature.
4. Briefly vortex the tube and then do a quick spin (less than 5000xg) to concentrate the liquid at the bottom.
5. Store the suspended plasmid at -20°C. The DNA is stable for at least one year from date of shipping when stored at -20°C.

**RefSeq:** [NM\\_007941.3](#), [NP\\_031967.2](#)

**RefSeq Size:** 2937 bp

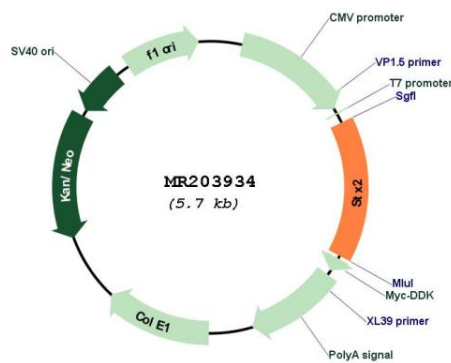
**RefSeq ORF:** 870 bp

**Locus ID:** 13852

**Cytogenetics:** 5 67.99 cM

**MW:** 33.2 kDa

### Product images:



Circular map for MR203934