

Product datasheet for MR203905

Prdm9 (BC023014) Mouse Tagged ORF Clone

Product data:

Product Type:	Expression Plasmids
Product Name:	Prdm9 (BC023014) Mouse Tagged ORF Clone
Tag:	Myc-DDK
Symbol:	Prdm9
Synonyms:	BC012016; Dsbc1; G1-419-29; Meissetz; PRDM9-B; Rcr1; repro7
Vector:	pCMV6-Entry (PS100001)
E. coli Selection:	Kanamycin (25 ug/mL)
Cell Selection:	Neomycin
ORF Nucleotide Sequence:	>MR203905 representing BC023014 Red=Cloning site Blue=ORF Green=Tags(s)

TTTTGTAATACGACTCACTATAGGGCGGCCGGAATTCGTCGACTGGATCCGGTACCGAGGAGATCTGCC
GCCGCGATCGCC

ATGTACAGGCTGCGAGAGAGAAAGGGCCTTGCCTATGAGGAGGTCAGCGAGCCTCAGGATGATGACTATC
TCTATTGTGAGAAGTGCCAGAATTTCTTCATCGACAGTTGTCCCAACCATGGGCCTCCTTTATTTGTAAA
AGACAGTATGGTGGACAGGGGCATCCCAACCACTCAGTCCTCAGTCTGCCCCCTGGGCTAAGAATTAGT
CCATCGGGCATCCCTGAAGCTGGACTTGGAGTATGGAATGAAGCATCTGATCTACCAGTCGGTCTGCACT
TTGGCCCCATGAGGGTCAGATCACAGAGGATGAAGAGGCAGCCAACAGTGGTTACTCCTGGCTGATTAC
CAAGGGAAGAACTGCTATGAGTATGTGGATGGACAGGACGAGTCCCAAGCCAACCTGGATGAGGTATGTG
AACTGTGCCCGGGATGATGAAGAGCAGAACCTGGTAGCCTTTCAATATCACAGGAAAATCTTCTATCGAA
CCTGCCGGTTATCAGACCAGTTGTGAGCTTCTGGTCTGGTATGGGGATGAGTACGCCAGGAACCTGGG
CATTAAAGTGGGGAAGCAAGATGAAGAAAGGATTCACAGCAGGAAGAGAATAAGGACAGAAATTCATCCT
TGTCCTTTGTGCTCTTTGGCCTTCTCAAGTCAGAAATTCCTCACTCAACATATGGAATGGAATCATCGCA
CTGAAATCTTCCAGGAACATCTGCAAGAATAAATCCTAAACCAGGAGATCCCTGTTCCAGATCAGCTTCA
GGAAACAACATGTTGATTCACAGAACAAAATGACAAGGCCAGCAATGAAGTAAAAAGAAAATCCAACCC
AGGCAGAGGCAAACGGATTTG

ACGCGTACGCGGCCGCTCGAGCAGAACTCATCTCAGAAGAGGATCTGGCAGCAATGATATCCTGGATT
ACAAGGATGACGACGATAAGGTTTAA



[View online »](#)

Protein Sequence: >MR203905 representing BC023014
 Red=Cloning site Green=Tags(s)

MYRLRERKGLAYEEVSEPQDDDYLYCEKCNFFIDSCPNHGPPFLVKDSMVDGRHPNHSVLSLPPGLRIS
 PSGIPEAGLGVWNEASDLPVGLHFGPYEGQITDEEEAANSYGYSWLITKGRNCYEYVDGQDESQANWMRYV
 NCARDDEEQNLVAFQYHRKIFYRTRCRVIRPGCELLVWYGDEYQELGIKWGSKMKKGFTAGRELRTIHP
 CLLCSLAFSSQKFLTQHMEWNHRTEIFPGTSARINPKPGDPCSDQLQEYHVDVSNKNDKASNEVKRKS
 RQRQTDL

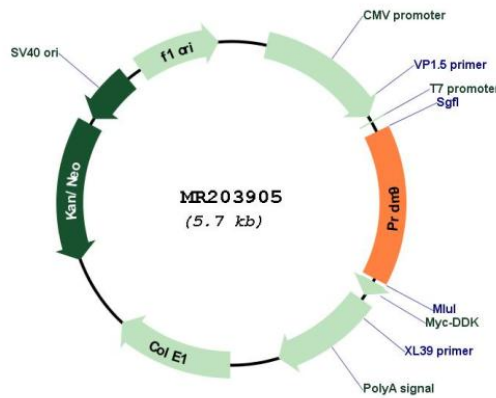
TRTRPLEQKLISEEDLAANDILDYKDDDDKV

Restriction Sites: SgfI-MluI

Cloning Scheme:



Plasmid Map:



ACCN: BC023014

ORF Size: 861 bp

OTI Disclaimer:	The molecular sequence of this clone aligns with the gene accession number as a point of reference only. However, individual transcript sequences of the same gene can differ through naturally occurring variations (e.g. polymorphisms), each with its own valid existence. This clone is substantially in agreement with the reference, but a complete review of all prevailing variants is recommended prior to use. More info
OTI Annotation:	This clone was engineered to express the complete ORF with an expression tag. Expression varies depending on the nature of the gene.
Components:	The ORF clone is ion-exchange column purified and shipped in a 2D barcoded Matrix tube containing 10ug of transfection-ready, dried plasmid DNA (reconstitute with 100 ul of water).
Reconstitution Method:	<ol style="list-style-type: none"> 1. Centrifuge at 5,000xg for 5min. 2. Carefully open the tube and add 100ul of sterile water to dissolve the DNA. 3. Close the tube and incubate for 10 minutes at room temperature. 4. Briefly vortex the tube and then do a quick spin (less than 5000xg) to concentrate the liquid at the bottom. 5. Store the suspended plasmid at -20°C. The DNA is stable for at least one year from date of shipping when stored at -20°C.
RefSeq:	BC023014.1
RefSeq Size:	1215 bp
RefSeq ORF:	863 bp
Locus ID:	213389
Cytogenetics:	17 A2
MW:	44.6 kDa