

Product datasheet for MR203867L3

Ppp1r3b (NM_177741) Mouse Tagged Lenti ORF Clone

Product data:

Product Type:	Expression Plasmids
Product Name:	Ppp1r3b (NM_177741) Mouse Tagged Lenti ORF Clone
Tag:	Myc-DDK
Symbol:	Ppp1r3b
Synonyms:	6430576E21; AW821953; GL; PTG
Mammalian Cell Selection:	Puromycin
Vector:	pLenti-C-Myc-DDK-P2A-Puro (PS100092)
E. coli Selection:	Chloramphenicol (34 ug/mL)
ORF Nucleotide Sequence:	The ORF insert of this clone is exactly the same as(MR203867).
Restriction Sites:	SgfI-MluI
Cloning Scheme:	

Cloning sites used for ORF Shuttling:



* The last codon before the Stop codon of the ORF.

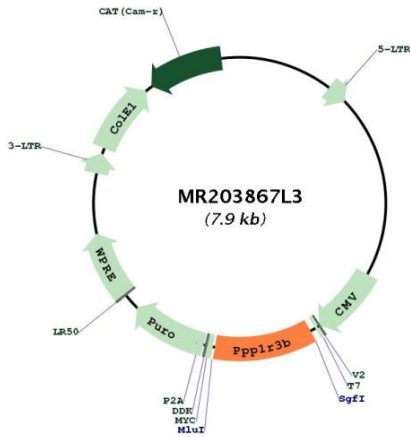
ACCN:	NM_177741
ORF Size:	855 bp



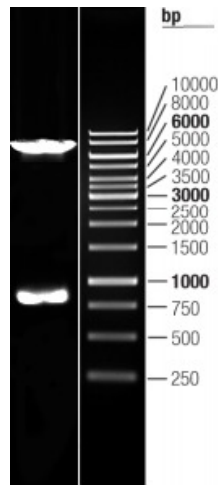
[View online »](#)

OTI Disclaimer:	The molecular sequence of this clone aligns with the gene accession number as a point of reference only. However, individual transcript sequences of the same gene can differ through naturally occurring variations (e.g. polymorphisms), each with its own valid existence. This clone is substantially in agreement with the reference, but a complete review of all prevailing variants is recommended prior to use. More info
OTI Annotation:	This clone was engineered to express the complete ORF with an expression tag. Expression varies depending on the nature of the gene.
Components:	The ORF clone is ion-exchange column purified and shipped in a 2D barcoded Matrix tube containing 10ug of transfection-ready, dried plasmid DNA (reconstitute with 100 ul of water).
Reconstitution Method:	<ol style="list-style-type: none">1. Centrifuge at 5,000xg for 5min.2. Carefully open the tube and add 100ul of sterile water to dissolve the DNA.3. Close the tube and incubate for 10 minutes at room temperature.4. Briefly vortex the tube and then do a quick spin (less than 5000xg) to concentrate the liquid at the bottom.5. Store the suspended plasmid at -20°C. The DNA is stable for at least one year from date of shipping when stored at -20°C.
RefSeq:	NM_177741.3
RefSeq Size:	4229 bp
RefSeq ORF:	855 bp
Locus ID:	244416
UniProt ID:	Q8C767
Cytogenetics:	8 A4
Gene Summary:	Acts as a glycogen-targeting subunit for phosphatase PP1. Facilitates interaction of the PP1 with enzymes of the glycogen metabolism and regulates its activity. Suppresses the rate at which PP1 dephosphorylates (inactivates) glycogen phosphorylase and enhances the rate at which it activates glycogen synthase and therefore limits glycogen breakdown. Its activity is inhibited by PYGL, resulting in inhibition of the glycogen synthase and glycogen phosphorylase phosphatase activities of PP1. Dramatically increases basal and insulin-stimulated glycogen synthesis upon overexpression in hepatocytes (By similarity). [UniProtKB/Swiss-Prot Function]

Product images:



Circular map for MR203867L3



Double digestion of MR203867L3 using SgfI and MluI