

## Product datasheet for MR203861

### Star (NM\_011485) Mouse Tagged ORF Clone

#### Product data:

Product Type:	Expression Plasmids
Product Name:	Star (NM_011485) Mouse Tagged ORF Clone
Tag:	Myc-DDK
Symbol:	Star
Synonyms:	AV363654; D8Ertd419e; stARD1
Mammalian Cell Selection:	Neomycin
Vector:	pCMV6-Entry (PS100001)
E. coli Selection:	Kanamycin (25 ug/mL)
ORF Nucleotide Sequence:	>MR203861 ORF sequence Red=Cloning site Blue=ORF Green=Tags(s)

TTTTGTAATACGACTCACTATAGGGCGGCCGGAATTCGTCGACTGGATCCGGTACCGAGGAGATCTGCC  
GCC**CGCATCGCC**

ATGTTCTCGCTACGTTCAAGCTGTGTGCTGGAAGCTCCTATAGACATATGCGGAATATGAAAGGATTAA  
GGCACCAAGCTGTGCTGGCCATTGGCCAAGAGCTCAACTGGAGAGCACTGGGGATTCCAGTCCCGGGT  
GATGGGTCAAGTTCGACGTCGGAGCTCTCTGCTTGGTTCTCAACTGGAAGCAACTCTATAGTGACCAG  
GAGCTGCTCCTACATCCAGCAGGGAGAGGTGGCTATGCAGAAGGCCTTGGGCATACTCAACAACAGGAAG  
GCTGGAAGAAGGAAAGCCAGCAGGAGAACGGGGACGAAGTGCTAAGTAAGATGGTGCCAGATGTGGGCAA  
GGTGTTCGCTTGGAGGTGGTGGTAGACCAGCCCATGGACAGACTCTATGAAGAACTTGTGGACCGCATG  
GAGGCCATGGGAGAGTGGAACCCAAATGTCAAGGAGATCAAGGTCTGCAGAGGATTGGAAGACACGG  
TCATCACTCATGAGCTGGCTGCGGCGGCAGCAGGCAACCTGGTGGGGCCTCGAGACTTCGTGAGCGTGCG  
CTGTACCAAGCGCAGAGGTTCCACCTGTGTGCTGGCAGGCATGGCCACACATTTGGGGAGATGCCGGAG  
CAGAGTGGTGTGTCATCAGAGCTGAACACGGCCCCACCTGCATGGTCTTCACTGGCTGGAAGTCCCT  
CCAAGACTAACTCACTTGGCTGCTCAGTATTGACCTGAAGGGTGGCTGCCGAAGACAATCATCAACCA  
GGTCTATCGCAGACCCAGATAGAGTTCCGCAACCACCTGCGCAAGCGCCTGGAAGCCAGCCCTGCCTCT  
GAGGCCAGTGT

**ACGCGT**ACGCGGCCGCTCGAGCAGAACTCATCTCAGAAGAGGATCTGGCAGCAAATGATATCCTGGATT  
ACAAGGATGACGACGATAAGGTTTAA



[View online »](#)

**Protein Sequence:** >MR203861 protein sequence  
 Red=Cloning site Green=Tags(s)

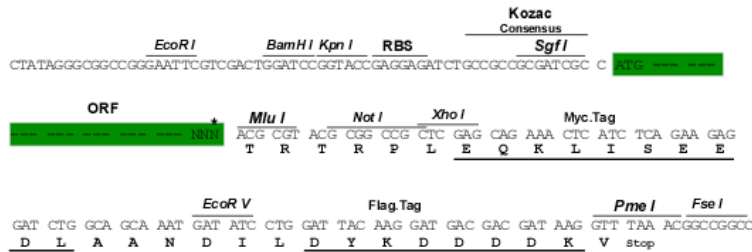
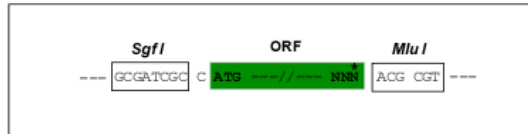
MFLATFKLCAGSSYRHRNMKGLRHQAVLAIGQELNWRALGDSSPGWMGQVRRRSLLGSQLEATLYSDQ  
 ELSYIQQGEVAMQKALGILNNQEGWKESQQENGDEVLSKMVPDVGVFRLEVVVDQPMDRLYEELVDRM  
 EAMGEWNPVKEIKVLQRIGKDTVITHELAAAAAGNLVGPRDFVSVRCKRRGSTCVLAGMATHFGEMPE  
 QSGVIRAEHGPTCMVLHPLAGSPSKTKLTWLLSIDLKGWLPKTIINQVLSQTQIEFANHLRKRLEASPAS  
 EAQC

TRTRPLEQKLISEEDLAANDILDYKDDDDKV

**Restriction Sites:** SgfI-MluI

**Cloning Scheme:**

Cloning sites used for ORF Shuttling:



\* The last codon before the Stop codon of the ORF

**ACCN:** NM\_011485

**ORF Size:** 855 bp

**OTI Disclaimer:** The molecular sequence of this clone aligns with the gene accession number as a point of reference only. However, individual transcript sequences of the same gene can differ through naturally occurring variations (e.g. polymorphisms), each with its own valid existence. This clone is substantially in agreement with the reference, but a complete review of all prevailing variants is recommended prior to use. [More info](#)

**OTI Annotation:** This clone was engineered to express the complete ORF with an expression tag. Expression varies depending on the nature of the gene.

**Components:** The ORF clone is ion-exchange column purified and shipped in a 2D barcoded Matrix tube containing 10ug of transfection-ready, dried plasmid DNA (reconstitute with 100 ul of water).

**Reconstitution Method:**

1. Centrifuge at 5,000xg for 5min.
2. Carefully open the tube and add 100ul of sterile water to dissolve the DNA.
3. Close the tube and incubate for 10 minutes at room temperature.
4. Briefly vortex the tube and then do a quick spin (less than 5000xg) to concentrate the liquid at the bottom.
5. Store the suspended plasmid at -20°C. The DNA is stable for at least one year from date of shipping when stored at -20°C.

**RefSeq:** [NM\\_011485.5](#)

**RefSeq Size:** 4007 bp

**RefSeq ORF:** 855 bp

**Locus ID:** 20845

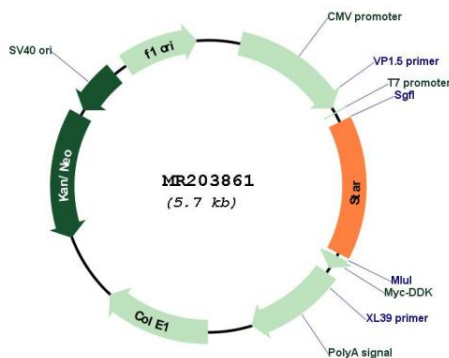
**UniProt ID:** [P51557](#)

**Cytogenetics:** 8 14.17 cM

**MW:** 31.6 kDa

**Gene Summary:** Plays a key role in steroid hormone synthesis by enhancing the metabolism of cholesterol into pregnenolone. Transporter that binds to and transport cholesterol through the intermembrane space of the mitochondrion (Probable).[UniProtKB/Swiss-Prot Function]

**Product images:**



Circular map for MR203861