

Product datasheet for MR203856

Muc15 (BC094506) Mouse Tagged ORF Clone

Product data:

| | |
|---------------------------|-------------------------------------------------------------------|
| Product Type: | Expression Plasmids |
| Product Name: | Muc15 (BC094506) Mouse Tagged ORF Clone |
| Tag: | Myc-DDK |
| Symbol: | Muc15 |
| Synonyms: | 4732460E09; D730046L02Rik; MUC-15 |
| Mammalian Cell Selection: | Neomycin |
| Vector: | pCMV6-Entry (PS100001) |
| E. coli Selection: | Kanamycin (25 ug/mL) |
| ORF Nucleotide Sequence: | >MR203856 ORF sequence Red=Cloning site Blue=ORF Green=Tags(s) |

TTTTGTAATACGACTCACTATAGGGCGCCGGGAATTCGTCGACTGGATCCGGTACCGAGGAGATCTGCC
GCC**CGATCGCC**

ATGTTGACCTTAGCCAAAATTGCATTGATTTCAAGTCTGTTCAATTCATTACCATTTGCAAGGCCTCAGA
AACAAAATCCACGAAGAAATGTAATCAGCACACTATAGAAGATGTGAAAATAATGAGAAACAATCCAT
TTATTTGGAAAGAAGCATAAATGTAATTCAGAGAATGGAAGTGATATCTCCAATCTCATGGTGACAACT
CCTTCTCCTTTGAATTTATCTACAACCTTCAGAACAACAATTCACCAGAACCTGGCTAATGACTAGCT
CATCTGAGAATTCAGACCCCTCCACATATTCTGTTCCCTTGGTTCAGGGCTTTGTTCCAAGTT
GCCTTTGAACTCATCCACAGCAGACGCAATCCTTTACAGGTCTCAGAACATTCCAACCTACAAAATTC
CCATCACCAGAAAATTTACTTGGTCTTTGGACAATGACACAATGAACAGTCTGAAGATATTTCCACTA
CAGTAAGACCCCTCCCTCCACCTCCAAAGACCACACCTGTGACCCCTTTCACAGCTGAACCTACTGAATG
GCTCCCCACAAAATGACAACCTTTGCTGGTTTTACCCCGTATCAAGAAAAACAACCTTTACAGCCTACA
CTAAAATTCACCAATAATTCAAACCTTTCCCAAATACATCAGACACCCCAAGAGAATAAGAACACAG
GAATAGTATTTGGAGCCATTTAGGAGCTATCTGGGTGCTTCACTGCTTAGCCTTGTGGCTACTTATT
GTGTGGACAACGGAAAACAGATTCATTTCCCATCGGCGCCTTTATGATGACAGAAAACGAACCACTTACT
ACAACCCAGCTG

ACGCGTACGCGGCCGCTCGAGCAGAAACTCATCTCAGAAGAGGATCTGGCAGCAAATGATATCCTGGATT
ACAAGGATGACGACGATAAGGTTTAA



[View online »](#)

Protein Sequence: >MR203856 protein sequence
Red=Cloning site Green=Tags(s)

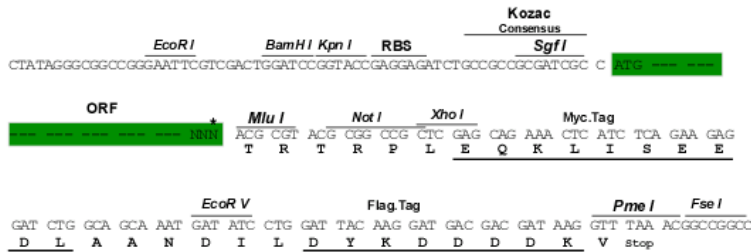
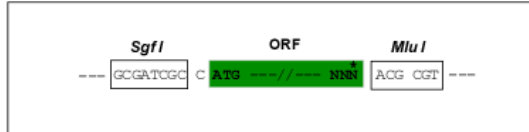
MLTLAKIALISSLFISLFPARFQKQNP RRNV TQHTIEDVKIMRNNSIYLERSINVTSENGSDISNLMVTT
 PSPLNLSTTFRTTNSTRTWLMTSSSENSRPSSTYSVPPLVQGFVSKLPLNSSTADANPLQVSEHSNSTNS
 PSPENFTWSLDNDTMNSPEDISTTVRPFPPPPKTTVPVTF TAEPTEWLP TNNDFAGF TPYQEKTTLQPT
 LKFTNNSKLF PNTSDTPKENKNTGIVFGAILGAILGASLLSLVGYLLCGQRK TDSF SHRRLYDDRNEPVT
 TTQL

TRTRPLEQKLISEEDLAANDILDYKDDDDKV

Restriction Sites: SgfI-MluI

Cloning Scheme:

Cloning sites used for ORF Shuttling:



* The last codon before the Stop codon of the ORF

ACCN: BC094506

ORF Size: 852 bp

OTI Disclaimer: The molecular sequence of this clone aligns with the gene accession number as a point of reference only. However, individual transcript sequences of the same gene can differ through naturally occurring variations (e.g. polymorphisms), each with its own valid existence. This clone is substantially in agreement with the reference, but a complete review of all prevailing variants is recommended prior to use. [More info](#)

OTI Annotation: This clone was engineered to express the complete ORF with an expression tag. Expression varies depending on the nature of the gene.

Components: The ORF clone is ion-exchange column purified and shipped in a 2D barcoded Matrix tube containing 10ug of transfection-ready, dried plasmid DNA (reconstitute with 100 ul of water).

Reconstitution Method:

1. Centrifuge at 5,000xg for 5min.
2. Carefully open the tube and add 100ul of sterile water to dissolve the DNA.
3. Close the tube and incubate for 10 minutes at room temperature.
4. Briefly vortex the tube and then do a quick spin (less than 5000xg) to concentrate the liquid at the bottom.
5. Store the suspended plasmid at -20°C. The DNA is stable for at least one year from date of shipping when stored at -20°C.

RefSeq: [BC094506](#), [AAH94506](#)

RefSeq Size: 3092 bp

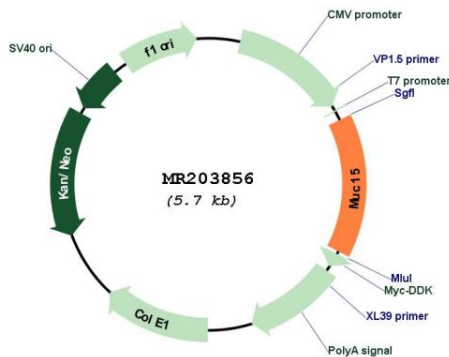
RefSeq ORF: 854 bp

Locus ID: 269328

Cytogenetics: 2 E3

MW: 31.4 kDa

Product images:



Circular map for MR203856