

Product datasheet for MR203820

Naxe (NM_144897) Mouse Tagged ORF Clone

Product data:

Product Type:	Expression Plasmids
Product Name:	Naxe (NM_144897) Mouse Tagged ORF Clone
Tag:	Myc-DDK
Symbol:	Naxe
Synonyms:	AA087124; AI-BP; AIBP; Apoa1ip; ESTM37; Naxe
Mammalian Cell Selection:	Neomycin
Vector:	pCMV6-Entry (PS100001)
E. coli Selection:	Kanamycin (25 ug/mL)
ORF Nucleotide Sequence:	>MR203820 ORF sequence Red=Cloning site Blue=ORF Green=Tags(s)

TTTTGTAATACGACTCACTATAGGGCGGCCGGGAATTCGTCGACTGGATCCGGTACCGAGGAGATCTGCC
GCC**CGGATCGCC**

ATGTCCGGGCTGCGGACGCTGCTGGGGCTGGGGCTGCTGGTTGCGGGCTCGCGCCTGCCACGGGTCA
GCCAGCAGAGTGTGTGTCGTGCAAGGCCCATCTGGTGGGAACACAGCGCCGGGGCTCGGAGACCATGGC
GGGCGCTGCGGTGAAGTACTTAAGTCAGGAGGAGGCTCAGGCCGTGGACCAAGAGCTTTTAACGAGTAT
CAGTTCAGCGTGGATCAACTCATGGAGCTGGCCGGTTGAGCTGTGCCACGGCTATTGCCAAGGCTTATC
CCCCACGTCTATGTCCAAGAGTCCCCGACTGTCTTGGTCATCTGTGGCCCCGAAATAACGGAGGGGA
TGGGCTGGTCTGTGCGCGACACCTCAAACCTTTTGGTTACCAGCCAATCTATTACCCAAAAGACCT
AACAAGCCCTCTCACTGGGCTAGTGACTCAGTGTGAGAAAATGGACATTCTTTCTTGGTGAATGC
CCCCAGAGCCCATGATGGTGGACGAGCTGTATGAGCTGGTGGTGGACGCCATCTTCGGCTTCAGTTTCAA
GGGTGACGTTTCGGGAGCCATCCACAGCATCCTGAGTGTCTTGTGAGTGGACTCACTGTGCCATTGCTAGC
ATCGACATTCCCTCAGGATGGGATGTAGAGAAGGGAAACCCTAGCGGAATCCAACCAGACTTACTCATCT
CACTGACGGCACCAAGAAGTCTGCAACTCACTTTACTGGCCGATATCATTACCTTGGGGTTCGCTTTGT
ACCACCTGCTCTAGAGAAGAAGTACCAGCTGAACCTGCCATCTTACCCTGACACAGAGTGTGTCTACCGT
CTACAG

ACGCGTACGCGGCCGCTCGAGCAGAAACTCATCTCAGAAGAGGATCTGGCAGCAAATGATATCCTGGATT
ACAAGGATGACGACGATAAGGTTTAA



[View online »](#)

Protein Sequence: >MR203820 protein sequence
 Red=Cloning site Green=Tags(s)

MSGLRLLGLLLVAGSRLPRVISQQSVCRARPIWWGTQRRGSETMAGAAVKYLSQEEAQVDQELFNEY
 QFSVDQLMELAGLSCATAIAKAYPPTSMKSPPTVLVICGPGNNGDGLVCARHLKLFQYQPTIYYPKRP
 NKPLFTGLVTQCQKMDIPFLGEMPPPEMMVDELVELVDAIFGF SFGKDVREPFHSILSVLSGLTVPIAS
 IDIPSGWDVEKGNPSGIQPDLLISLTAPKKSATHFTGRYHYLGGRFVPPALEKKYQLNLPSPYDTECVYR
 LQ

TRTRPLEQKLISEEDLAANDILDYKDDDDKV

Restriction Sites: SgfI-MluI

Cloning Scheme:

Cloning sites used for ORF Shuttling:



* The last codon before the Stop codon of the ORF

ACCN: NM_144897

ORF Size: 849 bp

OTI Disclaimer: The molecular sequence of this clone aligns with the gene accession number as a point of reference only. However, individual transcript sequences of the same gene can differ through naturally occurring variations (e.g. polymorphisms), each with its own valid existence. This clone is substantially in agreement with the reference, but a complete review of all prevailing variants is recommended prior to use. [More info](#)

OTI Annotation: This clone was engineered to express the complete ORF with an expression tag. Expression varies depending on the nature of the gene.

Components: The ORF clone is ion-exchange column purified and shipped in a 2D barcoded Matrix tube containing 10ug of transfection-ready, dried plasmid DNA (reconstitute with 100 ul of water).

Reconstitution Method:

1. Centrifuge at 5,000xg for 5min.
2. Carefully open the tube and add 100ul of sterile water to dissolve the DNA.
3. Close the tube and incubate for 10 minutes at room temperature.
4. Briefly vortex the tube and then do a quick spin (less than 5000xg) to concentrate the liquid at the bottom.
5. Store the suspended plasmid at -20°C. The DNA is stable for at least one year from date of shipping when stored at -20°C.

RefSeq: [NM_144897.3](#)

RefSeq Size: 905 bp

RefSeq ORF: 849 bp

Locus ID: 246703

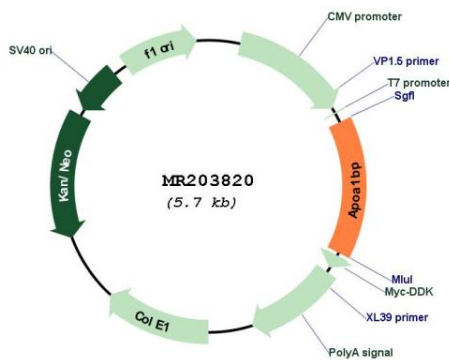
UniProt ID: [Q8K4Z3](#)

Cytogenetics: 3 F1

MW: 31 kDa

Gene Summary: Catalyzes the epimerization of the S- and R-forms of NAD(P)HX, a damaged form of NAD(P)H that is a result of enzymatic or heat-dependent hydration. This is a prerequisite for the S-specific NAD(P)H-hydrate dehydratase to allow the repair of both epimers of NAD(P)HX. [UniProtKB/Swiss-Prot Function]

Product images:



Circular map for MR203820