

Product datasheet for MR203818

Hes1 (NM_008235) Mouse Tagged ORF Clone

Product data:

Product Type:	Expression Plasmids
Product Name:	Hes1 (NM_008235) Mouse Tagged ORF Clone
Tag:	Myc-DDK
Symbol:	Hes1
Synonyms:	bHLHb39; Hry
Mammalian Cell Selection:	Neomycin
Vector:	pCMV6-Entry (PS100001)
E. coli Selection:	Kanamycin (25 ug/mL)
ORF Nucleotide Sequence:	>MR203818 representing NM_008235 Red=Cloning site Blue=ORF Green=Tags(s)

CTATAGGGCGCCGGAATTTCGTGACTGGATCCGGTACCGAGGAGATCTGCC
GCC**CGATCGCC**

ATGCCAGCTGATAAATGGAGAAAAATTCCTCCTCCCGGTGGCTGCTACCCAGCCAGTGTCAACACGA
CACCGGACAAACAAAGACGGCCTCTGAGCACAGAAAGTCATCAAAGCCTATCATGGAGAAGAGGCGAAG
GGCAAGAATAAATGAAAGTCTAAGCCAAGTCAAAACACTGATTTTGGATGCACTTAAGAAAGATAGCTCC
CGCATTCCAAGCTAGAGAAGGCAGACATTCTGGAAATGACTGTGAAGCACCTCCGGAACCTGCAGCGGG
CGCAGATGACCGCCGCTCAGCACAGACCCGAGCGTGTGGGAAATACCGCGCCGGCTTCAGCGAGTG
CATGAACGAGGTGACCCGCTTCTGTCCACGTGTGAGGGCGTTAACACCGAGGTGCGCACTCGGCTGCTG
GGCCACCTGGCCAAGTGCATGACCCAGATCAACGCCATGACCTACCCCGGGCAGGCGCACCCCGCCTTGC
AGGCGCCGCCCGCCGCCCCCGTCAAGGACCTGCGCGTCCCGAGCACGCGCCATTCGCGCCGCCCGCC
GCCGCTTGTGCCATCCCGGGGGCGCGGCCCCCTCCCGGCAGCGCACCCCTGCAAGTTGGGCAGCCAG
GCTGGAGAGGCTGCAAGGTTTTGGCGGCTTCCAAGTGGTGCCGGCTCTGACGGCAATTTGCCTTTC
TCATCCCCAACGGGGCCTTCGCTCACAGCGGCCGGTATCCCGGTCTACACCAGCAACAGTGGGACCTC
GGTGGTCTCAACGCAGTGTACCTTCCAGTGGCTCCTCGCTCACTTCGGACTCCATGTGGAGACCGTGG
CGAAC

ACGCGTACGCGGGCCGCTCGAGCAGAAACTCATCTCTGAAGAGGATCTGGCAGCAAATGATATCCTGGATT
ACAAGGATGACGACGATAAGGTTAA



[View online »](#)

Protein Sequence: >MR203818 representing BC051428
Red=Cloning site Green=Tags(s)

MPADIMEKNSSSPVAATPASVNTTPDKPKTASEHRKSSKPIMEKRRRARINESLSQLKTLILDALKKDSS
 RHSKLEKADILEMTVKHLRNLQRAQMTAALSTDPVSLGKYRAGFSECMNEVTRFLSTCEGVNTEVTRLL
 GHLANCMTQINAMTYPGQAHPALQAPPPPPSPGAGPQHAPFAPPPPLVPIGGAAPPGSAPCKLGSQ
 AGEAAKVFGGFQVVPAPDQGFALIPNGAFHSGPVIPIVYTSNGTSGVGNVAVSPSSGSSLTSDSMWRPW
 RN

TRTRPLEQKLISEEDLAANDILDYKDDDDKV

Restriction Sites: SgfI-MluI

Cloning Scheme:

Cloning sites used for ORF Shuttling:



ACCN: NM_008235

ORF Size: 846 bp

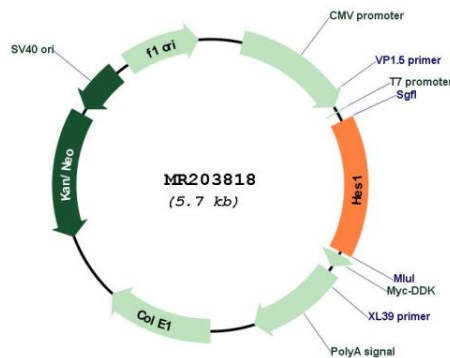
OTI Disclaimer: Due to the inherent nature of this plasmid, standard methods to replicate additional amounts of DNA in E. coli are highly likely to result in mutations and/or rearrangements. Therefore, OriGene does not guarantee the capability to replicate this plasmid DNA. Additional amounts of DNA can be purchased from OriGene with batch-specific, full-sequence verification at a reduced cost. Please contact our customer care team at custsupport@origene.com or by calling 301.340.3188 option 3 for pricing and delivery.

The molecular sequence of this clone aligns with the gene accession number as a point of reference only. However, individual transcript sequences of the same gene can differ through naturally occurring variations (e.g. polymorphisms), each with its own valid existence. This clone is substantially in agreement with the reference, but a complete review of all prevailing variants is recommended prior to use. [More info](#)

OTI Annotation: This clone was engineered to express the complete ORF with an expression tag. Expression varies depending on the nature of the gene.

Components:	The ORF clone is ion-exchange column purified and shipped in a 2D barcoded Matrix tube containing 10ug of transfection-ready, dried plasmid DNA (reconstitute with 100 ul of water).
Reconstitution Method:	<ol style="list-style-type: none"> 1. Centrifuge at 5,000xg for 5min. 2. Carefully open the tube and add 100ul of sterile water to dissolve the DNA. 3. Close the tube and incubate for 10 minutes at room temperature. 4. Briefly vortex the tube and then do a quick spin (less than 5000xg) to concentrate the liquid at the bottom. 5. Store the suspended plasmid at -20°C. The DNA is stable for at least one year from date of shipping when stored at -20°C.
RefSeq:	<u>NM_008235.2</u> , <u>NP_032261.1</u>
RefSeq Size:	1487 bp
RefSeq ORF:	849 bp
Locus ID:	15205
UniProt ID:	<u>P35428</u>
Cytogenetics:	16 21.09 cM
MW:	30.2 kDa
Gene Summary:	Transcriptional repressor of genes that require a bHLH protein for their transcription. May act as a negative regulator of myogenesis by inhibiting the functions of MYOD1 and ASH1 (By similarity). Binds DNA on N-box motifs: 5'-CACNAG-3' with high affinity and on E-box motifs: 5'-CANNTG-3' with low affinity. May play a role in a functional FA core complex response to DNA cross-link damage, being required for the stability and nuclear localization of FA core complex proteins, as well as for FANCD2 monoubiquitination in response to DNA damage (By similarity).[UniProtKB/Swiss-Prot Function]

Product images:



Circular map for MR203818