

## Product datasheet for MR203816

### Sdhb (NM\_023374) Mouse Tagged ORF Clone

#### Product data:

Product Type:	Expression Plasmids
Product Name:	Sdhb (NM_023374) Mouse Tagged ORF Clone
Tag:	Myc-DDK
Symbol:	Sdhb
Synonyms:	0710008N11Rik
Mammalian Cell Selection:	Neomycin
Vector:	pCMV6-Entry (PS100001)
E. coli Selection:	Kanamycin (25 ug/mL)
ORF Nucleotide Sequence:	>MR203816 ORF sequence Red=Cloning site Blue=ORF Green=Tags(s)

TTTTGTAATACGACTCACTATAGGGCGGCCGGAATTCGTCGACTGGATCCGGTACCGAGGAGATCTGCC  
GCC**CGATCGCC**

ATGGCGGCACGGTCGGGGTCTCCTTGAAGCGCGGCTTCCCGGTGCCGTTCTCGGCAGAGTCGGCCTGC  
AGTTTCAGGCCTGTCGAGGGGCACAGACAGCTGCTGCTGCAGCTCCAGAATCAAAAAATTTGCCATTTA  
CCGATGGGACCCAGACAAGACTGGAGATAAACCTCGAATGCAGACGTACGAGGTGGATCTGAATAAGTGC  
GGACCTATGGTGTGGATGCTTTAATCAAGATCAAGAATGAAGTGGATTCTACTTTAACCTCCGAAGAT  
CTTGTAGAGAAGGCATCTGTGGCTTTGCGCCATGAACATCAACGAGGCAATACTCTGGCGTGCACACG  
CAGGATCGACACGGACCTCAGCAAAGTCTCCAAAATCTACCCTCTCCACATATGTATGTGATCAAGGAT  
CTAGTCCCTGATTTGAGTAACTTCTACGCACAATCAAAATCCATTGAGCCTTATCTGAAGAAGAAGGATG  
AGTCCCAGGAGGGCAAGCAACAGTATCTGCAGTCCATCGAGGACCGGAGAAGCTGGACGGGCTGTACGA  
GTGCATCTGTGTGCCTGCTGCAGCACCAGCTGCCCCAGCTACTGGTGGAAACGGAGACAAGTACCTGGGG  
CCTGCAGTTCTCATGCAGGCCTATCGTGGATGATCGACTCCAGAGACGACTTCACAGAGGAACGCCTGG  
CCAAGCTGCAGGACCCCTTCTCTGTCTACCGCTGCCACACCATCATGAACTGCACACAGACCTGCCCAA  
GGGTCTGAATCCGGGAAAGCGATTGCGGAAATCAAGAAGATGATGGCGACCTACAAGGAGAAGCGAGCA  
TTGGCT

**ACGCGT**ACGCGGCCGCTCGAGCAGAAACTCATCTCAGAAGAGGATCTGGCAGCAAATGATATCCTGGATT  
ACAAGGATGACGACGATAAGGTTTAA



[View online »](#)

**Protein Sequence:** >MR203816 protein sequence  
 Red=Cloning site Green=Tags(s)

MAATVGVSLKRGFPAAVLGRVGLQFQACRGAQTAAAAAPRIKKFAIYRWDPKTGDKPRMQTYEVDLNC  
 GPMVLDALIKIKNEVDSTLTFRRSCREGICGSCAMNINGNTLACTRRIDTDLKSVSKIYPLPHMYVIKD  
 LVPDLSNFYAQYKSIIEPYLKKKDESQEGKQOYLQSIEDREKLDGLYECILCACCSTSCPSYWWNGDKYLG  
 PAVLMQAYRWMIDSRDDFTEERLAKLQDPFSVYRCHTIMNCTQTCPKGLNPGKAIKMMATYKEKRA  
 LA

TRTRPLEQKLISEEDLAANDILDYKDDDDKV

**Restriction Sites:** SgfI-MluI

**Cloning Scheme:**

Cloning sites used for ORF Shuttling:



\* The last codon before the Stop codon of the ORF

**ACCN:** NM\_023374

**ORF Size:** 849 bp

**OTI Disclaimer:** The molecular sequence of this clone aligns with the gene accession number as a point of reference only. However, individual transcript sequences of the same gene can differ through naturally occurring variations (e.g. polymorphisms), each with its own valid existence. This clone is substantially in agreement with the reference, but a complete review of all prevailing variants is recommended prior to use. [More info](#)

**OTI Annotation:** This clone was engineered to express the complete ORF with an expression tag. Expression varies depending on the nature of the gene.

**Components:** The ORF clone is ion-exchange column purified and shipped in a 2D barcoded Matrix tube containing 10ug of transfection-ready, dried plasmid DNA (reconstitute with 100 ul of water).

**Reconstitution Method:**

1. Centrifuge at 5,000xg for 5min.
2. Carefully open the tube and add 100ul of sterile water to dissolve the DNA.
3. Close the tube and incubate for 10 minutes at room temperature.
4. Briefly vortex the tube and then do a quick spin (less than 5000xg) to concentrate the liquid at the bottom.
5. Store the suspended plasmid at -20°C. The DNA is stable for at least one year from date of shipping when stored at -20°C.

**RefSeq:** [NM\\_023374.4](#)

**RefSeq Size:** 1091 bp

**RefSeq ORF:** 849 bp

**Locus ID:** 67680

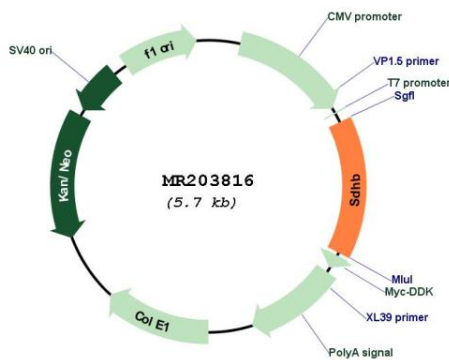
**UniProt ID:** [Q9CQA3](#)

**Cytogenetics:** 4 D3

**MW:** 31.8 kDa

**Gene Summary:** Iron-sulfur protein (IP) subunit of succinate dehydrogenase (SDH) that is involved in complex II of the mitochondrial electron transport chain and is responsible for transferring electrons from succinate to ubiquinone (coenzyme Q).[UniProtKB/Swiss-Prot Function]

**Product images:**



Circular map for MR203816