

Product datasheet for MR203808

Igfbp7 (NM_008048) Mouse Tagged ORF Clone

Product data:

Product Type:	Expression Plasmids
Product Name:	Igfbp7 (NM_008048) Mouse Tagged ORF Clone
Tag:	Myc-DDK
Symbol:	Igfbp7
Synonyms:	AGM; Fstl2; Mac25
Mammalian Cell Selection:	Neomycin
Vector:	pCMV6-Entry (PS100001)
E. coli Selection:	Kanamycin (25 ug/mL)
ORF Nucleotide Sequence:	>MR203808 ORF sequence Red=Cloning site Blue=ORF Green=Tags(s)

TTTTGTAATACGACTCACTATAGGGCGGCCGGGAATTCGTCGACTGGATCCGGTACCGAGGAGATCTGCC
GCC**CGCATCGCC**

ATGGAGCGGCCCGCGGCCCTGCTGCTGGGTGCAGCCGGACTGCTGCTCCTGCTCCTGCCCTCTCTCT
CTTCTCTCTTCGGATGCCTGCGGCCCGTGCCTGCGGCCCTCTGCCCCGCGCTGCCCGGCTCGGCTG
CCCGCTGGGTGAGACCCGCGACGCGTGC GG GTGCTGCCCGGTGTGTGCTCGCGGCAGGGTGAGCCGTG
GGGGCGCGCGCCGGCGGGGGCACTGCGCGCCGGCATGGAGTGCCTGAAGAGCCGCAAGAGCGGGA
GGGTAAGCCGGGGCAGCAGCCGGCGGTCCC GCGACCCTCGCCGTGTGCGTGTGCAAGAGCCGCTACCC
GGTGTGCGGCAGCAACGGCATCACCTACCCAGCGGCTGCCAGCTGCGCGCTGCCAGCCTGCGCGCCGAG
AGCCCGGGGAGAAGGCCATCACCCAGGTGAGCAAGGGCACCTGCGAGCAAGGTCTTCCATAGTGACGC
CCCCAAGGACATCTGGAACGTCACCTGGTGCCAAGGTGTTCTTGAGCTGTGAGGTGATCGGGATCCCAAC
CCCTGTCTCTGGAACAAGGTAAGGATCACTCTGGAGTTCAGCGGACAGAAGTCTTGCCTGGT
GACCGGAAAAATCTGGCCATTCAGACCCGGGGTGGTCCAGAAAAGCATGAAGTAACGGGCTGGGTGCTGG
TATCTCTCTAAGTAAGGAGGACGCTGGAGAGTATGAGTGCCACGCATCCAACCCCAAGGGCAGGCTTC
CGCGGCAGCCAAAATTACAGTGGTTGATGCCCTCCATGAAATACCACTGAAAAAGGTGAAGGTGCTCAG
TTA

AG**CGGACCG**ACGCGTACGCGGCCGCTCGAGCAGAACTCATCTCAGAAGAGGATCTGGCAGCAAATGATATCC
TGGATTACAAGGATGACGACGATAAGGTTAA



[View online »](#)

Protein Sequence: >MR203808 protein sequence
 Red=Cloning site Green=Tags(s)

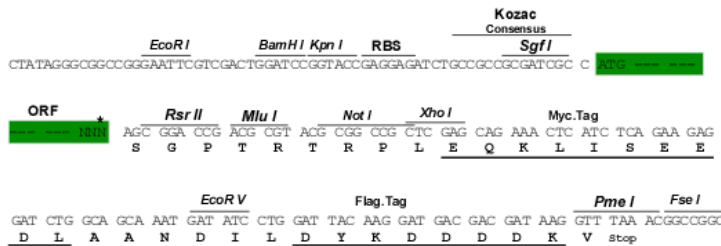
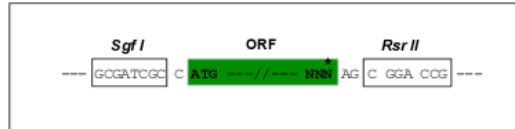
MERPPRALLLGAAGLLLLLLPLSSSSSSDACGPCVPASCPALPRLGCPLGETRDACGCCPVCARGEGEPC
 GGAAGGGHCAPGMECVKSRKRRRGKAGAAAGGPATLAVCVCKSRYPVCGSNGITYPSGQLRAASLRAE
 SRGEKAITQVSKGTCEQGPSIVTPPKDIWNVTGAKVFLSCEVIGIPTPVLINWVKRDHSGVQRTELLPG
 DRENLAIQTRGGPEKHEVTGWVLSPLSKEDAGEYECHASNSQGGQASAAAKITVVDALHEIPLKKGEGAQ
 L

SGPTRTRPLEQKLISEEDLAANDILDYKDDDDKV

Restriction Sites: SgfI-RsrII

Cloning Scheme:

Cloning sites used for ORF Shuttling:



* The last codon before the Stop codon of the ORF

ACCN: NM_008048

ORF Size: 846 bp

OTI Disclaimer: The molecular sequence of this clone aligns with the gene accession number as a point of reference only. However, individual transcript sequences of the same gene can differ through naturally occurring variations (e.g. polymorphisms), each with its own valid existence. This clone is substantially in agreement with the reference, but a complete review of all prevailing variants is recommended prior to use. [More info](#)

OTI Annotation: This clone was engineered to express the complete ORF with an expression tag. Expression varies depending on the nature of the gene.

Components: The ORF clone is ion-exchange column purified and shipped in a 2D barcoded Matrix tube containing 10ug of transfection-ready, dried plasmid DNA (reconstitute with 100 ul of water).

Reconstitution Method:

1. Centrifuge at 5,000xg for 5min.
2. Carefully open the tube and add 100ul of sterile water to dissolve the DNA.
3. Close the tube and incubate for 10 minutes at room temperature.
4. Briefly vortex the tube and then do a quick spin (less than 5000xg) to concentrate the liquid at the bottom.
5. Store the suspended plasmid at -20°C. The DNA is stable for at least one year from date of shipping when stored at -20°C.

RefSeq: [NM_008048.2](#), [NP_032074.2](#)

RefSeq Size: 1120 bp

RefSeq ORF: 849 bp

Locus ID: 29817

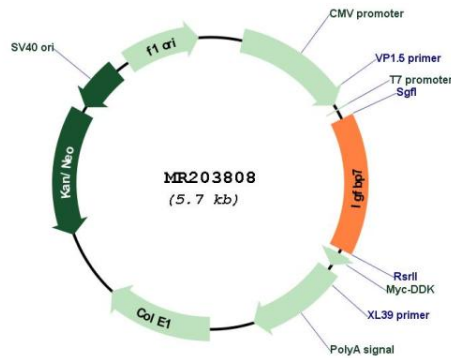
UniProt ID: [Q61581](#)

Cytogenetics: 5 C3.3

MW: 28.9 kDa

Gene Summary: Binds IGF-I and IGF-II with a relatively low affinity Stimulates prostacyclin (PGI2) production. Stimulates cell adhesion (By similarity).[UniProtKB/Swiss-Prot Function]

Product images:



Circular map for MR203808