

Product datasheet for **MR203802**

Cgref1 (NM_001160149) Mouse Tagged ORF Clone

Product data:

Product Type: Expression Plasmids
Product Name: Cgref1 (NM_001160149) Mouse Tagged ORF Clone
Tag: Myc-DDK
Symbol: Cgref1
Synonyms: 1110004G24Rik; AW045201; Cgr11
Mammalian Cell Selection: Neomycin
Vector: pCMV6-Entry (PS100001)
E. coli Selection: Kanamycin (25 ug/mL)
ORF Nucleotide Sequence: >MR203802 ORF sequence
 Red=Cloning site Blue=ORF Green=Tags(s)

TTTTGTAATACGACTCACTATAGGGCGGCCGGAATTCGTCGACTGGATCCGGTACCGAGGAGATCTGCC
 GCC**CGATCGCC**

ATGTTCCAGTGGCTGATGCAAGCGTTGATGCTGCCACTATTGCTGCTCCCTTTAGGTCGAGCTGCTCCCA
 AGGATGGAGTTGCAAGGTTGGACCCTGAGGTACAACAGCAGCTCACACCCAACCTTTCCAGCCAGGCC
 TGAGCAGCTCCGACATCTGCAGAATTATCTCAAGGACTAGAGAAGATGGAAGAGGATCCTGAGCACATG
 GACCGGGAGCAAGTCTGCTTTTCGCTCTTGTCTTTCATGACTATGACCAGAATGGACAGCTGGACGGCC
 TGGAGCTACTGTCCATGCTGACAGCAGCTCTGGCCCTGGAGCTGCACACTTTCCATCAACCCGGTGAT
 CCTAGTAGACTCGGTGCTTGGAGCTCAGGACCTGGATGGAGACGGGCTCATGACTCCTCGAGAGCTC
 ATCAACTTCCCAGAAGTCCCAACACACAGAGTCCCTTCCCCAGCTCTCCAGGAGCCACAACCTGCTG
 GAAGTCAGCCACTTTTAGCCAACAGTCCACTGCAGTCAGAACTCAGCAGTCTCTGGGGACTAAAGAAGA
 AATTAGGGGCCAGGTAGAGGCCAAGAGGGCGTCTTGGAGCCTGAACAGGAGGCTGGACATCAGACAGAG
 GGAAAAGTAGATACCCTAAGCCCTGAAGAGGAGGCTAGGGGACAGGCAGAGTCTGAAGGAGATGTCCAG
 GTCCCAGAGAAGGTGCTGAGGAACAGGTGGAGATCAAGGACAATGAAGGAGAAGCCAAAGAACTGCTGGT
 GGAAACACTGGAGAGCCTAAACTCCTCAATGAGGCTGAGGCTCATAGCATCAATTGGAGAACGATGAG
 ATA

ACGCGTACGCGGCCGCTCGAGCAGAACTCATCTCAGAAGAGGATCTGGCAGCAAATGATATCCTGGATT
 ACAAGGATGACGACGATAAGGTTAA



[View online »](#)

Protein Sequence: >MR203802 protein sequence
Red=Cloning site Green=Tags(s)

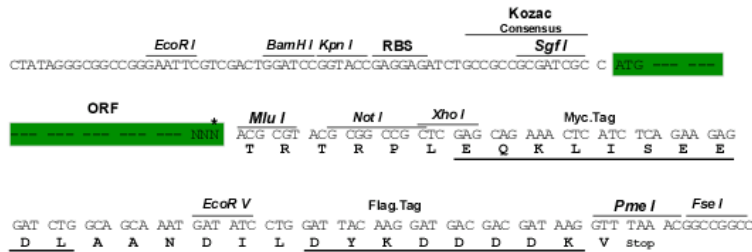
MFQWLMQALMPLLLLLPLGRAAPKDGVARLDPEVQQQLTPNPFQPGPEQLRHLQNYLKGLEKMEEDPEHM
DREQVLLSLFALHDYDQNGQLDGLELLSMLTAALAPGAAHFPINPVILVVDSVLETQDLGDGLMTPAEL
INFPEVPKHTESSLPPALQEPQPAGSQPLANSPLQSETQQSLGTKEEIRGQVEAKRASLEPEQEAGHQTE
GKVDTLSPHEEARGQAESEGDVPGPREGAEQVEIKDNEGEAKELLVETLESLNTPNEAEHHSIQLENDE
I

TRTRPLEQKLISEEDLAANDILDYKDDDDKV

Restriction Sites: SgfI-MluI

Cloning Scheme:

Cloning sites used for ORF Shuttling:



* The last codon before the Stop codon of the ORF

ACCN: NM_001160149

ORF Size: 846 bp

OTI Disclaimer: The molecular sequence of this clone aligns with the gene accession number as a point of reference only. However, individual transcript sequences of the same gene can differ through naturally occurring variations (e.g. polymorphisms), each with its own valid existence. This clone is substantially in agreement with the reference, but a complete review of all prevailing variants is recommended prior to use. [More info](#)

OTI Annotation: This clone was engineered to express the complete ORF with an expression tag. Expression varies depending on the nature of the gene.

Components: The ORF clone is ion-exchange column purified and shipped in a 2D barcoded Matrix tube containing 10ug of transfection-ready, dried plasmid DNA (reconstitute with 100 ul of water).

Reconstitution Method:

1. Centrifuge at 5,000xg for 5min.
2. Carefully open the tube and add 100ul of sterile water to dissolve the DNA.
3. Close the tube and incubate for 10 minutes at room temperature.
4. Briefly vortex the tube and then do a quick spin (less than 5000xg) to concentrate the liquid at the bottom.
5. Store the suspended plasmid at -20°C. The DNA is stable for at least one year from date of shipping when stored at -20°C.

RefSeq: [NM_001160149.1](#), [NP_001153621.1](#)

RefSeq Size: 1266 bp

RefSeq ORF: 843 bp

Locus ID: 68567

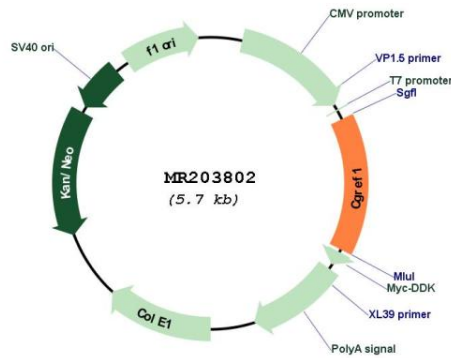
UniProt ID: [Q8R1U2](#)

Cytogenetics: 5 B1

MW: 30.8 kDa

Gene Summary: Mediates cell-cell adhesion in a calcium-dependent manner. Able to inhibit growth in several cell lines (By similarity).[UniProtKB/Swiss-Prot Function]

Product images:



Circular map for MR203802