

Product datasheet for MR203792

Rpp38 (NM_001013376) Mouse Tagged ORF Clone

Product data:

Product Type:	Expression Plasmids
Product Name:	Rpp38 (NM_001013376) Mouse Tagged ORF Clone
Tag:	Myc-DDK
Symbol:	Rpp38
Synonyms:	C330006A15Rik
Mammalian Cell Selection:	Neomycin
Vector:	pCMV6-Entry (PS100001)
E. coli Selection:	Kanamycin (25 ug/mL)
ORF Nucleotide Sequence:	>MR203792 ORF sequence Red=Cloning site Blue=ORF Green=Tags(s)

TTTTGTAATACGACTCACTATAGGGCGGCCGGAATTCGTCGACTGGATCCGGTACCGAGGAGATCTGCC
GCC**CGATCGCC**

ATGGCTGCAGCCCTCAGGCACCAAGAGGGGATCTATTCGGAAGACTAGACCTCTGGTTGTAACAAAT
CACTAAACAACCCTTATGTTATTTCTGGAGCACCTTGGAGAGAGAAGACATACACTTTATATTACAGAC
TCTCGAAGCCAAGTTAAATTGATTGGACTTCAGAAAATTGAAGATAAGAAGAAAAGGAAAAAACAGCT
CTTATGAAAAAGCAAAGTTGCCGGCCAGATATTGAGATTAGCGAGGATCCAAAAGAGCCTGATGGGGATG
TGCTGGTGTGAGGGTGGACACCTGTACAGTACAGGAAACAGCTGGTCATTGGTGTAAATGAAGTCACCAG
AGCTCTGGAGAGGAATGAACTGCTCCTGGTCTAGTGTGTAAGTCAGTCAAGCCTGCCATCATCACCTCA
CACCTGATTGAGTCTAAGCAGAAGTCTCCTGCCTGTGAGTACCTCAGCTCAGCGAGAGAATTG
CTCCTGTGATTGGCTTAAATGTGTGCTAGCCTTGGGTTCCAGAAAGAACCAGGGACTTTGCTGATGA
AGTAGAAGCCATCATTCCAGGGTGCCAGCTTAAACGTGCCATGGCTTCCAGACAGAACCCAAGGTCCC
ACAGACAGTTTAGAGACTGAACCCTCGGAAAGCCAGGACAACGAGATTTGGACACGTCAATTTGATGACC
TTACAAAACCTTAGTAAGAGGAAGCTTGTGAAGGTGGACAAGCTTCAGCTGCAACATTACAACCCCTTAA
AATAAAAAAGCTCATTCCAACCCTAGTAAGATAAGAAAACACCCAAAAGTAAAAAGTCCATTTCCAAG

ACGCGTACGCGGCCGCTCGAGCAGAAACTCATCTCAGAAGAGGATCTGGCAGCAAATGATATCCTGGATT
ACAAGGATGACGACGATAAGGTTTAA



[View online »](#)

Protein Sequence: >MR203792 protein sequence
 Red=Cloning site Green=Tags(s)

MAAAPQAPKRGSIKTRPLVVKTSLNNPYVISWSTLEREDIHFILQTLKAKFKLIGLQKIEDKKRKKTA
 LMKKQSCRPDIEISEDPKPEPDGDLVSGWTPVHVRKQLVIGVNEVTRALERNELLVLVCKSVKPAITTS
 HLIQLSLSRTPACQVPQLSERIAPVIGLKCVLALGSRKNTRDFADEVEAIIPRVPSLNPWLPDRTQGP
 TDSLETEPSESQDNEILDTSFDDLTKLSKRKLAEGGQASAATLQPLKIKKLIIPNPSKIRKPPKSKKSISK

TRTRPLEQKLISEEDLAANDILDYKDDDDKV

Restriction Sites: SgfI-MluI

Cloning Scheme:

Cloning sites used for ORF Shuttling:



* The last codon before the Stop codon of the ORF

ACCN: NM_001013376

ORF Size: 843 bp

OTI Disclaimer: The molecular sequence of this clone aligns with the gene accession number as a point of reference only. However, individual transcript sequences of the same gene can differ through naturally occurring variations (e.g. polymorphisms), each with its own valid existence. This clone is substantially in agreement with the reference, but a complete review of all prevailing variants is recommended prior to use. [More info](#)

OTI Annotation: This clone was engineered to express the complete ORF with an expression tag. Expression varies depending on the nature of the gene.

Components: The ORF clone is ion-exchange column purified and shipped in a 2D barcoded Matrix tube containing 10ug of transfection-ready, dried plasmid DNA (reconstitute with 100 ul of water).

Reconstitution Method:

1. Centrifuge at 5,000xg for 5min.
2. Carefully open the tube and add 100ul of sterile water to dissolve the DNA.
3. Close the tube and incubate for 10 minutes at room temperature.
4. Briefly vortex the tube and then do a quick spin (less than 5000xg) to concentrate the liquid at the bottom.
5. Store the suspended plasmid at -20°C. The DNA is stable for at least one year from date of shipping when stored at -20°C.

RefSeq: [NM_001013376.1](#), [NP_001013394.1](#)

RefSeq Size: 1027 bp

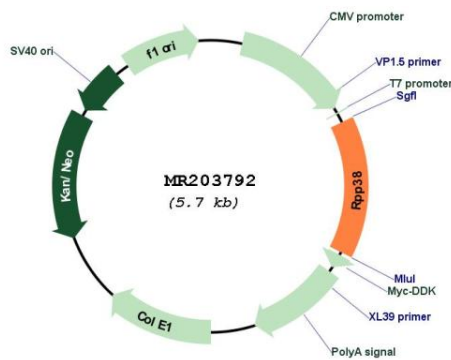
RefSeq ORF: 843 bp

Locus ID: 227522

Cytogenetics: 2 A1

MW: 31.1 kDa

Product images:



Circular map for MR203792