

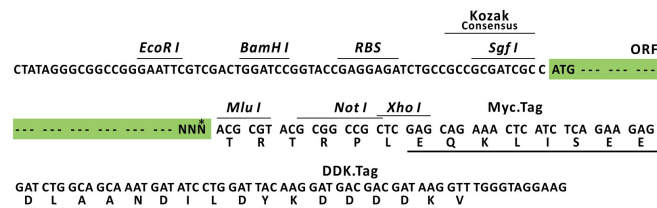
## Product datasheet for **MR203753L3**

### Bpifa1 (NM\_011126) Mouse Tagged Lenti ORF Clone

#### Product data:

Product Type: Expression Plasmids  
 Product Name: Bpifa1 (NM\_011126) Mouse Tagged Lenti ORF Clone  
 Tag: Myc-DDK  
 Symbol: Bpifa1  
 Synonyms: LUNX; NASG; Plunc; SPLUNC1; SPURT  
 Mammalian Cell Selection: Puromycin  
 Vector: pLenti-C-Myc-DDK-P2A-Puro (PS100092)  
 E. coli Selection: Chloramphenicol (34 ug/mL)  
 ORF Nucleotide Sequence: The ORF insert of this clone is exactly the same as(MR203753).  
 Restriction Sites: SgfI-MluI  
 Cloning Scheme:

Cloning sites used for ORF Shuttling:



\* The last codon before the Stop codon of the ORF.

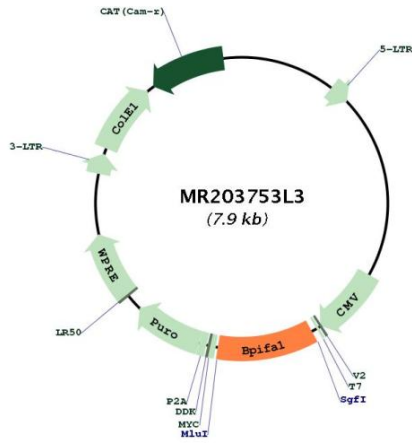
ACCN: NM\_011126  
 ORF Size: 837 bp



[View online »](#)

<b>OTI Disclaimer:</b>	The molecular sequence of this clone aligns with the gene accession number as a point of reference only. However, individual transcript sequences of the same gene can differ through naturally occurring variations (e.g. polymorphisms), each with its own valid existence. This clone is substantially in agreement with the reference, but a complete review of all prevailing variants is recommended prior to use. <a href="#">More info</a>
<b>OTI Annotation:</b>	This clone was engineered to express the complete ORF with an expression tag. Expression varies depending on the nature of the gene.
<b>Components:</b>	The ORF clone is ion-exchange column purified and shipped in a 2D barcoded Matrix tube containing 10ug of transfection-ready, dried plasmid DNA (reconstitute with 100 ul of water).
<b>Reconstitution Method:</b>	<ol style="list-style-type: none"><li>1. Centrifuge at 5,000xg for 5min.</li><li>2. Carefully open the tube and add 100ul of sterile water to dissolve the DNA.</li><li>3. Close the tube and incubate for 10 minutes at room temperature.</li><li>4. Briefly vortex the tube and then do a quick spin (less than 5000xg) to concentrate the liquid at the bottom.</li><li>5. Store the suspended plasmid at -20°C. The DNA is stable for at least one year from date of shipping when stored at -20°C.</li></ol>
<b>RefSeq:</b>	<a href="#">NM_011126.1</a>
<b>RefSeq Size:</b>	1109 bp
<b>RefSeq ORF:</b>	837 bp
<b>Locus ID:</b>	18843
<b>UniProt ID:</b>	<a href="#">P97361</a>
<b>Cytogenetics:</b>	2 H1
<b>Gene Summary:</b>	Lipid-binding protein which shows high specificity for the surfactant phospholipid dipalmitoylphosphatidylcholine (DPPC) (By similarity). Plays a role in the innate immune responses of the upper airways (PubMed:23499554). Reduces the surface tension in secretions from airway epithelia and inhibits the formation of biofilm by pathogenic Gram-negative bacteria, such as P.aeruginosa and K.pneumoniae (PubMed:23499554). Negatively regulates proteolytic cleavage of SCNN1G, an event that is required for activation of the epithelial sodium channel (ENaC), and thereby contributes to airway surface liquid homeostasis and proper clearance of mucus (By similarity). Plays a role in the airway inflammatory response after exposure to irritants (By similarity). May attract macrophages and neutrophils (By similarity).[UniProtKB/Swiss-Prot Function]

Product images:



Circular map for MR203753L3