

Product datasheet for MR203729

Psmb7 (NM_011187) Mouse Tagged ORF Clone

Product data:

Product Type:	Expression Plasmids
Product Name:	Psmb7 (NM_011187) Mouse Tagged ORF Clone
Tag:	Myc-DDK
Symbol:	Psmb7
Synonyms:	AU020723; MC14
Mammalian Cell Selection:	Neomycin
Vector:	pCMV6-Entry (PS100001)
E. coli Selection:	Kanamycin (25 ug/mL)
ORF Nucleotide Sequence:	>MR203729 ORF sequence Red=Cloning site Blue=ORF Green=Tags(s)

TTTTGTAATACGACTCACTATAGGGCGGCCGGAATTCGTCGACTGGATCCGGTACCGAGGAGATCTGCC
GCC**CGATCGCC**

ATGGCGGCTGTGTCGGTGTTCAGCCACCGGTCGGAGGCTTTTCTTTTGATAATTGTCGCAGGAATGCTG
TCTTGGAAGCGGATTTTCGCAAAAAGGGGTTCAAGCTCCCGAAAGCTCGGAAAACGGCACTACCATCGC
GGGGTGGTGTATAAGGATGGCATAGTTCTTGGAGCAGACACGAGAGCAACTGAAGGGATGGTTGTTGCT
GACAAAACACTGTTCAAAAATTCACTTCATATCTCCTAATATTTATTGCTGTGGTGTGGACAGCTGCAG
ACACAGACATGACAACCCAGCTTATTTCTCCAACCTGGAGCTCCACTCTCTGACCACTGGCCGCCTCCC
GAGAGTTGTTACAGCTAATCGGATGCTGAAGCAGATGCTTTCAGGTATCAAGGTTACATTGGTGCAGCC
CTAGTTTTGGGGGAGTAGATGTTACTGGACCTCATCTCTACAGCATCTATCCTCATGGATCAACTGATA
AATTGCCTTATGTCACCATGGGTTCTGGCTCCTTGGCAGCAATGGCTGTGTTTGAAGATAAGTTTAGGCC
AGATATGGAGGAGGAAGAAGCCAAGAAGCTAGTGAGTGAGGCTATTGCAGCTGGCATCTTAATGACTTG
GGGTCTGGAAGCAACATTGATCTGTGTGTATCAGCAAGAGCAAGCTGGACTTTCTTCGTCATTCTCAG
TGCCCAACAAGAAAGGGACCAGGCTTGGCCGGTACAGATGTGAGAAAGGCACTACCGCTGTCCCTACCGA
GAAAGTTACCCCTCTGGAGATTGAGGTGCTAGAAGAGACTGTTTCAGACAATGGATACTTCG

ACGCGTACGCGGCCGCTCGAGCAGAAACTCATCTCAGAAGAGGATCTGGCAGCAAATGATATCCTGGATT
ACAAGGATGACGACGATAAGGTTTAA



Protein Sequence: >MR203729 protein sequence
Red=Cloning site Green=Tags(s)

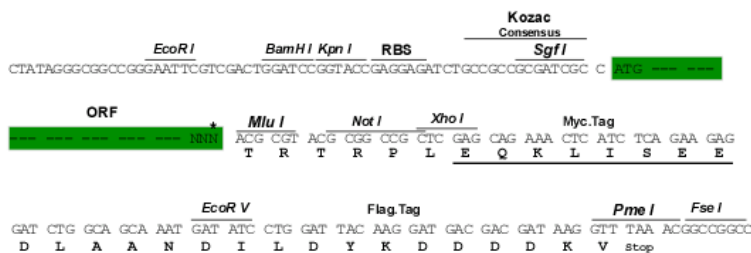
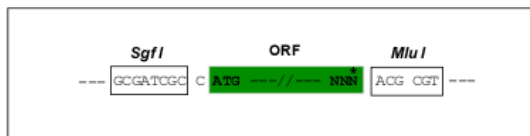
MAAVSVFPQPPVGGFSDNCRNAVLEADFAKKGFKLPKARKTGTTIAGVVYKDGIVLGADTRATEGMVVA
 DNKCSKIHFISPNICYCCGAGTAADTDMTTQLISSNLELHSLTTGRLPRVVTANRMLKQMLFRYQGYIGAA
 LVLGGVDVTGPHLYSIYPHGSTDKLPYVTMGSGLAAMAVFEDKFRPDMEEEEAKKL VSEAIAAGIFNDL
 GSGSNIDL CVISKSLDFLRPFSVPNKKGTRLGRYRCEKGTAVL TEKVTPLEIEVLEETVQTMDTS

TRTRPLEQKLISEEDLAANDILDYKDDDDKV

Restriction Sites: Sgfl-MluI

Cloning Scheme:

Cloning sites used for ORF Shuttling:



* The last codon before the Stop codon of the ORF

ACCN: NM_011187

ORF Size: 834 bp

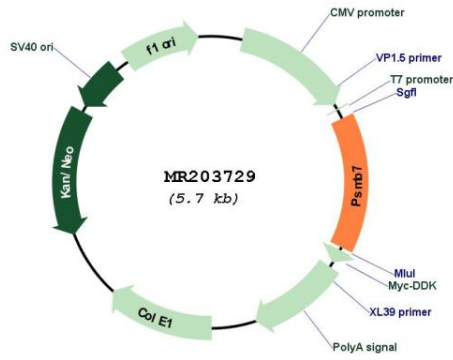
OTI Disclaimer: The molecular sequence of this clone aligns with the gene accession number as a point of reference only. However, individual transcript sequences of the same gene can differ through naturally occurring variations (e.g. polymorphisms), each with its own valid existence. This clone is substantially in agreement with the reference, but a complete review of all prevailing variants is recommended prior to use. [More info](#)

OTI Annotation: This clone was engineered to express the complete ORF with an expression tag. Expression varies depending on the nature of the gene.

Components: The ORF clone is ion-exchange column purified and shipped in a 2D barcoded Matrix tube containing 10ug of transfection-ready, dried plasmid DNA (reconstitute with 100 ul of water).

Reconstitution Method:	<ol style="list-style-type: none">1. Centrifuge at 5,000xg for 5min.2. Carefully open the tube and add 100ul of sterile water to dissolve the DNA.3. Close the tube and incubate for 10 minutes at room temperature.4. Briefly vortex the tube and then do a quick spin (less than 5000xg) to concentrate the liquid at the bottom.5. Store the suspended plasmid at -20°C. The DNA is stable for at least one year from date of shipping when stored at -20°C.
RefSeq:	NM_011187.1 , NP_035317.1
RefSeq Size:	969 bp
RefSeq ORF:	834 bp
Locus ID:	19177
UniProt ID:	P70195
Cytogenetics:	2 24.42 cM
MW:	29.9 kDa
Gene Summary:	<p>Component of the 20S core proteasome complex involved in the proteolytic degradation of most intracellular proteins. This complex plays numerous essential roles within the cell by associating with different regulatory particles. Associated with two 19S regulatory particles, forms the 26S proteasome and thus participates in the ATP-dependent degradation of ubiquitinated proteins. The 26S proteasome plays a key role in the maintenance of protein homeostasis by removing misfolded or damaged proteins that could impair cellular functions, and by removing proteins whose functions are no longer required. Associated with the PA200 or PA28, the 20S proteasome mediates ubiquitin-independent protein degradation. This type of proteolysis is required in several pathways including spermatogenesis (20S-PA200 complex) or generation of a subset of MHC class I-presented antigenic peptides (20S-PA28 complex). Within the 20S core complex, PSMB7 displays a trypsin-like activity.[UniProtKB/Swiss-Prot Function]</p>

Product images:



Circular map for MR203729