

## Product datasheet for MR203709

### Cnpy3 (NM\_028065) Mouse Tagged ORF Clone

#### Product data:

Product Type:	Expression Plasmids
Product Name:	Cnpy3 (NM_028065) Mouse Tagged ORF Clone
Tag:	Myc-DDK
Symbol:	Cnpy3
Synonyms:	1600025D17Rik; 2410050O22Rik; AI413153; CAG; CAG4A; ERD; ERDA5; PRAT4A; Tnr; TnrC5
Mammalian Cell Selection:	Neomycin
Vector:	pCMV6-Entry (PS100001)
E. coli Selection:	Kanamycin (25 ug/mL)
ORF Nucleotide Sequence:	>MR203709 ORF sequence Red=Cloning site Blue=ORF Green=Tags(s)

TTTTGTAATACGACTCACTATAGGGCGGCCGGAATTCGTCGACTGGATCCGGTACCGAGGAGATCTGCC  
GCC**CGATCGCC**

ATGGAGTCCATGTCTGAGCTCGCGCCCCGCTGCCTCTTATTTCTTTGCTGCTGCTGCTCCGCTGCTGC  
TCCTTCTGCCCGAAGCTAGGCCGAGTCCCGCCGGGGCTGAGGAGACCGACTGGGTGCGATTGCCAG  
CAAATGCGAAGTGTGCAAGTATGTTGCTGTGGAGCTGAAGTCGGCTTTTGGAGAAACGGAAAGACCAAG  
GAAGTGATTGACACCGGCTATGGCATCCTGGACGGGAAGGGCTCTGGAGTCAAGTACACCAAGTCGGACT  
TACGGTTAATTGAAGTCACTGAGACCATTGCAAGAGGCTTCTGGACTACAGCCTGCACAAGGAGAGGAC  
TGGCAGCAACCGTTTGCCAAGGTATGTCGGAGACCTTTGAGACGCTGCACAACCTAGTCCACAAGGG  
GTCAAGGTGGTGATGGATATCCCTATGAGCTGTGGAACGAGACCTCAGCAGAGGTGGCTGACCTCAAGA  
AGCAGTGTGACGTGCTGGTGAAGAGTTTGAAGAGGTGATTGAGGACTGGTACAGGAACCACCAGGAGGA  
AGACCTGACTGAATTCCTCTGTGCCAACCACTGCTGAAGGAAAGGACACGAGTTGCTAGCAGAGCGG  
TGGTCTGGCAAGAAGGGGACATAGCCTCCCTGGGAGGGAAGAAATCCAAGAAGAAGCGCAGCGGAGTCA  
AGGGCTCCTCCAGTGGCAGCAGCAAGCAGAGGAAGGAAGTGGGGGCTGGGGGAGGATGCCAACGCCGA  
GGAGGAGGAGGGTGTGCAGAAGGCATCGCCCTCCACACAGCCCCCTGATGAGCTG

**ACGCGT**ACGCGGCCGCTCGAGCAGAAACTCATCTCAGAAGAGGATCTGGCAGCAAATGATATCCTGGATT  
ACAAGGATGACGACGATAAGGTTTAA



**Protein Sequence:** >MR203709 protein sequence  
 Red=Cloning site Green=Tags(s)

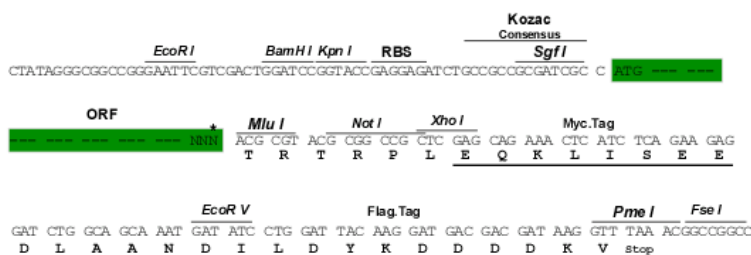
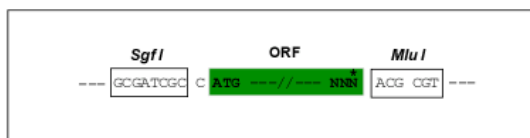
MESMSSELAPRCLLFPLLLLLPLLLLPAKLGSPAGAEETDWRVLPKCEVCKYVAVELKSAFEETGKTK  
 EVIDTGYGILDGKGGVYTKSDLRLIEVTETICKRLLDYSLHKERTGSNRFAGMSETFETLHNLVHKG  
 VKVVM DIPYELWNETS AEVADLKKQCDVLVEEFEEVIEDWYRNHQEEDL TEFLCANHVLKGDTSCLAER  
 WSGKKGDIASLGKKSKKKRSGVKGSSSSGSKQRKELGGLGEDANAEEEEGVQKASPLPHSPPEL

TRTRPLEQKLISEEDLAANDILDYKDDDDKV

**Restriction Sites:** SgfI-MluI

**Cloning Scheme:**

Cloning sites used for ORF Shuttling:



\* The last codon before the Stop codon of the ORF

**ACCN:** NM\_028065

**ORF Size:** 831 bp

**OTI Disclaimer:** The molecular sequence of this clone aligns with the gene accession number as a point of reference only. However, individual transcript sequences of the same gene can differ through naturally occurring variations (e.g. polymorphisms), each with its own valid existence. This clone is substantially in agreement with the reference, but a complete review of all prevailing variants is recommended prior to use. [More info](#)

**OTI Annotation:** This clone was engineered to express the complete ORF with an expression tag. Expression varies depending on the nature of the gene.

**Components:** The ORF clone is ion-exchange column purified and shipped in a 2D barcoded Matrix tube containing 10ug of transfection-ready, dried plasmid DNA (reconstitute with 100 ul of water).

**Reconstitution Method:**

1. Centrifuge at 5,000xg for 5min.
2. Carefully open the tube and add 100ul of sterile water to dissolve the DNA.
3. Close the tube and incubate for 10 minutes at room temperature.
4. Briefly vortex the tube and then do a quick spin (less than 5000xg) to concentrate the liquid at the bottom.
5. Store the suspended plasmid at -20°C. The DNA is stable for at least one year from date of shipping when stored at -20°C.

**RefSeq:** [NM\\_028065.4](#)

**RefSeq Size:** 1898 bp

**RefSeq ORF:** 831 bp

**Locus ID:** 72029

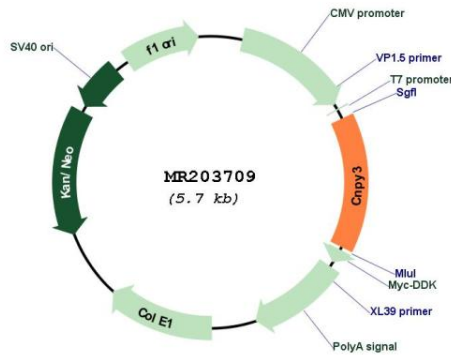
**UniProt ID:** [Q9DAU1](#)

**Cytogenetics:** 17 C

**MW:** 30.5 kDa

**Gene Summary:** This gene encodes a member of the canopy family of proteins. The encoded protein may play a role in the maturation of toll-like receptors. Homozygous knockout mice for this gene show reduced cell surface expression of toll-like receptors and an impaired immune response including reduced production of cytokines in a mouse model of sepsis. Alternative splicing results in multiple transcript variants. [provided by RefSeq, Apr 2015]

**Product images:**



Circular map for MR203709