

## Product datasheet for **MR203682**

### Tollip (NM\_023764) Mouse Tagged ORF Clone

#### Product data:

**Product Type:** Expression Plasmids  
**Product Name:** Tollip (NM\_023764) Mouse Tagged ORF Clone  
**Tag:** Myc-DDK  
**Symbol:** Tollip  
**Synonyms:** 4930403G24Rik; 4931428G15Rik  
**Mammalian Cell Selection:** Neomycin  
**Vector:** pCMV6-Entry (PS100001)  
**E. coli Selection:** Kanamycin (25 ug/mL)  
**ORF Nucleotide Sequence:** >MR203682 representing NM\_023764  
Red=Cloning site Blue=ORF Green=Tags(s)

TTTTGTAATACGACTCACTATAGGGCGGCCGGAATTCGTCGACTGGATCCGGTACCGAGGAGATCTGCC  
GCC**CGATCGCC**

ATGGCGACCACCGTCAGCACGCAGCGGGCCGGTGTACATTGGTGAACCCCCAGGACTTCTCCGTA  
TAACACCCACACAACAGCAGCAGCAGATCCAGCTGGATGCCAGGCAGCCAGCAGCTGCAGTATGGAGG  
AACAGTTGGTACCGTGGGTGCCTCAGCATCACTGTGGTACAGGCAAAATTGGCAAAGAATTATGGCATG  
ACTCGTATGGACCCTTACTGCCGTCTGCGTCTGGGCTATGCTGTTTATGAACTCCACAGCACACAATG  
GGCCAAGAACCCTCGTGGAACAAAGTATTCAGTGCACAGTGCCCCAGGTGTGGACTGTTCTACCT  
TGAGATCTTCGATGAGCGCGCTTCTCCATGGATGACCGCATAGCTTGGACCCACATCACCATCCCCGAG  
TCCTGAAGCAGGGCCAAGTGGAGGACGAGTGGTATAGCCTGAGTGGGAGGCAGGGCGATGACAAGGAGG  
GCATGATTAACCTGGTCAATGTCCACACGTCCTCCCAGCTGCCATGATGATGCCTCCTCAGCCTGTGGT  
CCTGATGCCAACTGTGTACCAGCAGGGTGTGGCTATGTGCCATTGCAGGGATGCCTGCTGTGCAGC  
CCTGGCATGGTGCCGATGGCCATGCCCCACCAGCTGTGGCTCCTCAGCCCCGCTGTAATGAAGAGGACC  
TCAAAGCTATCCAGGACATGTTTCCAACATGGACAGGGAAGTATCCGTTCTGTGCTTGAAGCCCAGAG  
AGGGAACAAAGATGCTGCCATCAATTCTTGCTGCAAATGGGTGAAGAGTCC

**ACGCGT**ACGCGGCCGCTCGAGCAGAACTCATCTCAGAAGAGGATCTGGCAGCAAATGATATCCTGGATT  
ACAAGGATGACGACGATAAGGTTTAA



[View online »](#)

**Protein Sequence:** >MR203682 representing NM\_023764  
 Red=Cloning site Green=Tags(s)

MATTVSTQRGPVYIGELPQDFLRITPTQQQQIQLDAQAAQQLQYGGTVGTGRLSITVVQAKLAKNYGM  
 TRMDPYCRLRLGYAVYETPTAHNGAKNPRWNKVIQCTVPPGVDSFYLEIFDERAFSMDRIAATHITPE  
 SLKQGQVEDEWYSLSGRQDDKEGMINLVMSYTSLPAAMMPPQPVVLMPTVYQQGVGYVPIAGMPAVCS  
 PGMVPMAMPPPAVAPQRCNEEDLKAIQDMFPNMDREVIRSVLEAQRGNKDAAINSLQMGEES

TRTRPLEQKLISEEDLAANDILDYKDDDDKV

**Chromatograms:** [https://cdn.origene.com/chromatograms/mm9044\\_e04.zip](https://cdn.origene.com/chromatograms/mm9044_e04.zip)

**Restriction Sites:** SgfI-MluI

**Cloning Scheme:**

Cloning sites used for ORF Shuttling:



\* The last codon before the Stop codon of the ORF

**ACCN:** NM\_023764

**ORF Size:** 822 bp

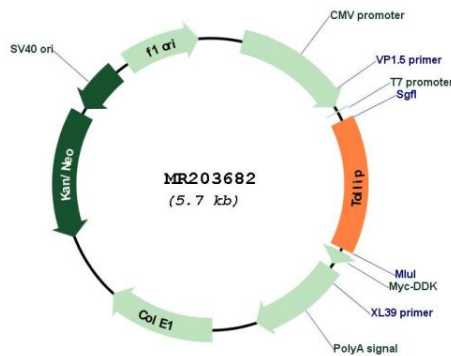
**OTI Disclaimer:** Due to the inherent nature of this plasmid, standard methods to replicate additional amounts of DNA in E. coli are highly likely to result in mutations and/or rearrangements. Therefore, OriGene does not guarantee the capability to replicate this plasmid DNA. Additional amounts of DNA can be purchased from OriGene with batch-specific, full-sequence verification at a reduced cost. Please contact our customer care team at [custsupport@origene.com](mailto:custsupport@origene.com) or by calling 301.340.3188 option 3 for pricing and delivery.

The molecular sequence of this clone aligns with the gene accession number as a point of reference only. However, individual transcript sequences of the same gene can differ through naturally occurring variations (e.g. polymorphisms), each with its own valid existence. This clone is substantially in agreement with the reference, but a complete review of all prevailing variants is recommended prior to use. [More info](#)

**OTI Annotation:** This clone was engineered to express the complete ORF with an expression tag. Expression varies depending on the nature of the gene.

<b>Components:</b>	The ORF clone is ion-exchange column purified and shipped in a 2D barcoded Matrix tube containing 10ug of transfection-ready, dried plasmid DNA (reconstitute with 100 ul of water).
<b>Reconstitution Method:</b>	<ol style="list-style-type: none"> <li>1. Centrifuge at 5,000xg for 5min.</li> <li>2. Carefully open the tube and add 100ul of sterile water to dissolve the DNA.</li> <li>3. Close the tube and incubate for 10 minutes at room temperature.</li> <li>4. Briefly vortex the tube and then do a quick spin (less than 5000xg) to concentrate the liquid at the bottom.</li> <li>5. Store the suspended plasmid at -20°C. The DNA is stable for at least one year from date of shipping when stored at -20°C.</li> </ol>
<b>RefSeq:</b>	<u><a href="#">NM_023764.4</a></u>
<b>RefSeq Size:</b>	3705 bp
<b>RefSeq ORF:</b>	825 bp
<b>Locus ID:</b>	54473
<b>UniProt ID:</b>	<u><a href="#">Q9QZ06</a></u>
<b>Cytogenetics:</b>	7 F5
<b>MW:</b>	30.8 kDa
<b>Gene Summary:</b>	Component of the signaling pathway of IL-1 and Toll-like receptors. Inhibits cell activation by microbial products. Recruits IRAK1 to the IL-1 receptor complex. Inhibits IRAK1 phosphorylation and kinase activity. Connects the ubiquitin pathway to autophagy by functioning as a ubiquitin-ATG8 family adapter and thus mediating autophagic clearance of ubiquitin conjugates. The TOLLIP-dependent selective autophagy pathway plays an important role in clearance of cytotoxic polyQ proteins aggregates (By similarity).[UniProtKB/Swiss-Prot Function]

### Product images:



Circular map for MR203682