

Product datasheet for MR203666

Tef (BC017689) Mouse Tagged ORF Clone

Product data:

Product Type:	Expression Plasmids
Product Name:	Tef (BC017689) Mouse Tagged ORF Clone
Tag:	Myc-DDK
Symbol:	Tef
Synonyms:	2310028D20Rik
Mammalian Cell Selection:	Neomycin
Vector:	pCMV6-Entry (PS100001)
E. coli Selection:	Kanamycin (25 ug/mL)
ORF Nucleotide Sequence:	>MR203666 ORF sequence Red=Cloning site Blue=ORF Green=Tags(s)

TTTTGTAATACGACTCACTATAGGGCGGCCGGAATTCGTCGACTGGATCCGGTACCGAGGAGATCTGCC
GCC**CGATCGCC**

ATGGACATGCCTGAGGTCCCTCAAGTCCCTGCTGGAGCATTCTTTGCCTTGGTCAGAGAAGAAGGCAGATA
AGGAAAAGGGGAAGGAAAAGCTGGAGGAAGACGAGTCAGCAGCAGCCAGTACCATGGCCGTCTCTGCCTC
CCTCATGCCACCCATCTGGACAAGACCATCCCCTACGATGGCGAGTCTTCCACCTCGAGTACATGGAC
CTGGATGAGTTCCTGCTGGAGAACGGCATCCCTGCCAGCCCCACCCACCTGGCACAGAACCTGCTGCTGC
CTGTGGCAGAGCTTGAAGGAAAGGAGTCTGCCAGCTCTTCCACGGCATCGCCACCATCTTCTCTACTGC
CATCTTTCAGCCCTCGGAAACCGTGTCCAGCACAGAATCGTCCTTGGAAAAGGAGAGGGAGACCCCAAGT
CCCATCGACCCAGCTGTGTGGAGTGCATGTGAACCTCAACCCTGACCCCTGCCGACCTGGTCTCTCTA
GTGTACCAGGGGGGAGCTCTTCAACCCTCGGAAGCACAGGTTTGCAGAGGAGGACCTGAAGCCCCAGCC
CATGATCAAAAAGCCAAGAAAGTCTTTGTCCCTGATGAACAGAAGGATGAAAAGTATTGGACAAGACGT
AAGAAGAACAATGTGGCAGCTAAACGCTCCCGGATGCCAGGCGCCTGAAGGAGAACCAGATCACCATCC
GGCAGCCTTCTGGAGAAGGAGAACACAGCCCTGCCGACGGAGTTGCCGAGCTTCGAAGGAGGTGGG
CAAGTGAAGACCATCGTGTCCAAGTACGAGACCAAGTACGGGCCCTTG

ACGCGTACGCGGCCGCTCGAGCAGAAACTCATCTCAGAAGAGGATCTGGCAGCAAATGATATCCTGGATT
ACAAGGATGACGACGATAAGGTTTAA



[View online »](#)

Protein Sequence: >MR203666 protein sequence
 Red=Cloning site Green=Tags(s)

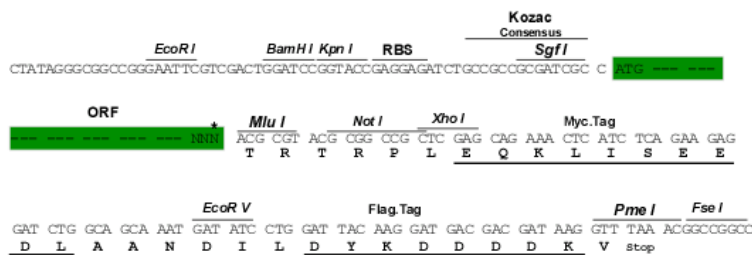
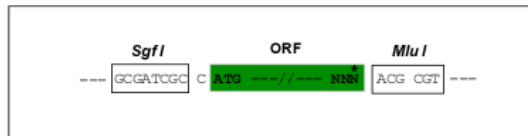
MDMPEVLKSLLEHSLPWSEKKADKEKGEKLEEDESAASSTMAVSASLMPPIWDKTIIPYDGESFHLEYMD
 LDEFLLLENGIPASPTHLAQNLLLPVALEGGESASSTASPPSSSTAIFQPSETVSTESSLEKERETPS
 PIDPSCVEVDVNFNPDADLVLSVPGGELFNPRKHRFAEEDLKPQPMIKKAKKVFVPDEQKDEKYWTRR
 KKNVAAKRSRDARRLKENQITIRAAFLKENTALRTEVAELRKEVKGCKTIVSKYETKYGPL

TRTRPLEQKLISEEDLAANDILDYKDDDDKV

Restriction Sites: SgfI-MluI

Cloning Scheme:

Cloning sites used for ORF Shuttling:



* The last codon before the Stop codon of the ORF

ACCN: BC017689

ORF Size: 819 bp

OTI Disclaimer: The molecular sequence of this clone aligns with the gene accession number as a point of reference only. However, individual transcript sequences of the same gene can differ through naturally occurring variations (e.g. polymorphisms), each with its own valid existence. This clone is substantially in agreement with the reference, but a complete review of all prevailing variants is recommended prior to use. [More info](#)

OTI Annotation: This clone was engineered to express the complete ORF with an expression tag. Expression varies depending on the nature of the gene.

Components: The ORF clone is ion-exchange column purified and shipped in a 2D barcoded Matrix tube containing 10ug of transfection-ready, dried plasmid DNA (reconstitute with 100 ul of water).

Reconstitution Method:

1. Centrifuge at 5,000xg for 5min.
2. Carefully open the tube and add 100ul of sterile water to dissolve the DNA.
3. Close the tube and incubate for 10 minutes at room temperature.
4. Briefly vortex the tube and then do a quick spin (less than 5000xg) to concentrate the liquid at the bottom.
5. Store the suspended plasmid at -20°C. The DNA is stable for at least one year from date of shipping when stored at -20°C.

RefSeq: [BC017689](#), [AAH17689](#)

RefSeq Size: 4018 bp

RefSeq ORF: 821 bp

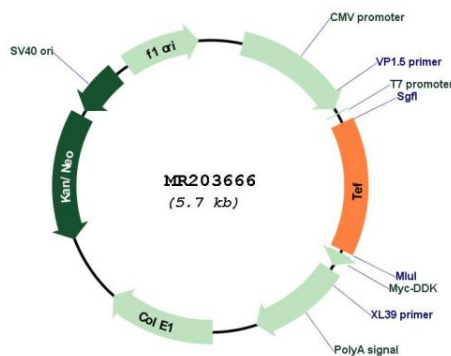
Locus ID: 21685

Cytogenetics: 15 38.25 cM

MW: 30.6 kDa

Gene Summary: Transcription factor that binds to and transactivates the TSHB promoter. Binds to a minimal DNA-binding sequence 5'-[TC][AG][AG]TTA[TC][AG]-3' (By similarity). Also activates the telokin promoter in smooth muscle-specific and calcium-dependent manner.[UniProtKB/Swiss-Prot Function]

Product images:



Circular map for MR203666