

## Product datasheet for MR203655

### Bsg (BC010270) Mouse Tagged ORF Clone

#### Product data:

Product Type:	Expression Plasmids
Product Name:	Bsg (BC010270) Mouse Tagged ORF Clone
Tag:	Myc-DDK
Symbol:	Bsg
Synonyms:	CD147, HT-7, EMMPRIN
Mammalian Cell Selection:	Neomycin
Vector:	pCMV6-Entry (PS100001)
E. coli Selection:	Kanamycin (25 ug/mL)
ORF Nucleotide Sequence:	>MR203655 representing BC010270 Red=Cloning site Blue=ORF Green=Tags(s)

TTTTGTAATACGACTCACTATAGGGCGGCCGGAATTCGTCGACTGGATCCGGTACCGAGGAGATCTGCC  
GCC**CGATCGCC**

ATGGCGGCGGCGCTGCTGCTGGCGCTGGCCTTCACGCTCTTGAGCGGCCAAGGCGCTGCGCGGCGCGG  
GCACCATCAAACCTCGGTCCAGGAAGTCAACTCAAACACAGCTTACCTGCTCTTTGAACAGCAGTGG  
CGTTGACATCGTTGGCCACCGCTGGATGAGAGGTGGCAAGGACTGCAGGAGGACACTCTGCCCGACCTG  
CATACGAAGTACATAGTGGACGCAGATGACCGCTCTGGGAATATTCCTGCATCTTCTTCTGAGCCTG  
TGGGCAGAAGCGAGATCAATGTGGAAGGGCCACCCAGGATCAAGGTCGGAAGAAATCAGAGCATTCCAG  
TGAGGGAGAGCTTGCGAACTGGTCTGCAAGTCCGATGCATCCTACCCTCCTATTACAGATTGGTTCTGG  
TTAAGACCTCTGACACTGGGGAAGAAGAGGCAATCACCAATAGCACTGAAGCCAATGGCAAGTATGTGG  
TGGTATCCACGCCTGAGAAGTCACAGCTGACCATCAGCAACCTTGACGTAATGTTGACCCTGGCACCTA  
CGTGTGTAATGCCACCAACGCCAGGCCACTACTCGGAAACCATCTCACTGCGTGTGCGGAGCCGCATG  
GCAGCCCTCTGGCCCTTCTAGGCATCGTGGCTGAGGTCTGGTGTGGTTACCATCATCTTTATCTATG  
AGAAGAGGCGGAAGCCAGACCAGACCCTGGACGAGGATGACCTGGCGCCGCCCACTGAAGGGCAGTGG  
AACTCACATGAATGACAAGGACAAGAATGTACGCCAGAGGAACGCCACC

**ACGCGT**ACGCGGCGGCTCGAGCAGAAACTCATCTCAGAAGAGGATCTGGCAGCAAATGATATCCTGGATT  
ACAAGGATGACGACGATAAGGTTTAA



[View online »](#)

**Protein Sequence:** >MR203655 representing BC010270  
Red=Cloning site Green=Tags(s)

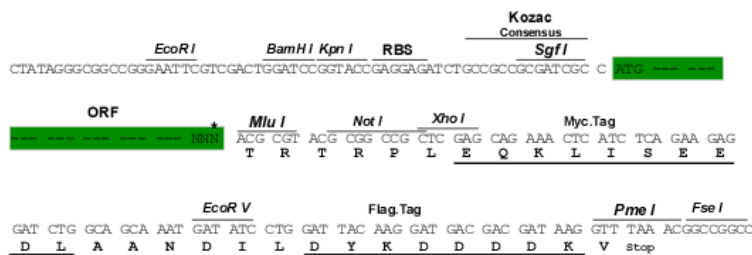
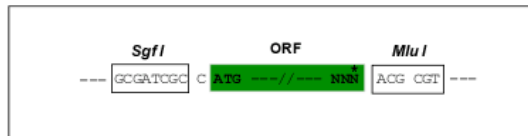
MAAALLLALAFTLLSGQGACAAAGTIQTSVQEVNSKTQLTCSLNSSGVDIVGHRWMRGGKVLQEDTLPDL  
 HTKYIVDADDRSGEYSICIFLPEPVGRSEINVEGPPRIKVGKKSEHSSEGELAKLVCKSDASYPPITDWF  
 FKTSDTGEEEAITNSTEANGKYVVVSTPEKSQLTISNLDVNVDPGTYVCNATNAQGTTRTISLRVSRM  
 AALWPFLGIVA EVLVLVTIIFIYEKRRKPDQTLDEDDPGAAPLKGSGTHMNDKDKNVRQRNAT

TRTRPLEQKLISEEDLAANDILDYKDDDDKV

**Restriction Sites:** Sgfl-MluI

**Cloning Scheme:**

Cloning sites used for ORF Shuttling:



**ACCN:** BC010270

**ORF Size:** 819 bp

**OTI Disclaimer:** The molecular sequence of this clone aligns with the gene accession number as a point of reference only. However, individual transcript sequences of the same gene can differ through naturally occurring variations (e.g. polymorphisms), each with its own valid existence. This clone is substantially in agreement with the reference, but a complete review of all prevailing variants is recommended prior to use. [More info](#)

**OTI Annotation:** This clone was engineered to express the complete ORF with an expression tag. Expression varies depending on the nature of the gene.

**Components:** The ORF clone is ion-exchange column purified and shipped in a 2D barcoded Matrix tube containing 10ug of transfection-ready, dried plasmid DNA (reconstitute with 100 ul of water).

**Reconstitution Method:**

1. Centrifuge at 5,000xg for 5min.
2. Carefully open the tube and add 100ul of sterile water to dissolve the DNA.
3. Close the tube and incubate for 10 minutes at room temperature.
4. Briefly vortex the tube and then do a quick spin (less than 5000xg) to concentrate the liquid at the bottom.
5. Store the suspended plasmid at -20°C. The DNA is stable for at least one year from date of shipping when stored at -20°C.

**RefSeq:** [BC010270](#), [AAH10270](#)

**RefSeq Size:** 1287 bp

**RefSeq ORF:** 821 bp

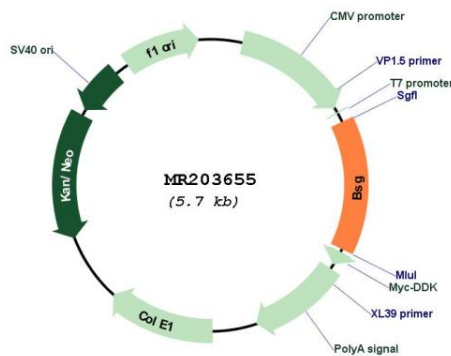
**Locus ID:** 12215

**Cytogenetics:** 10 39.72 cM

**MW:** 47.2 kDa

**Gene Summary:** Plays an important role in targeting the monocarboxylate transporters SLC16A1, SLC16A3, SLC16A8, SLC16A11 and SLC16A12 to the plasma membrane. Plays pivotal roles in spermatogenesis, embryo implantation, neural network formation and tumor progression. Stimulates adjacent fibroblasts to produce matrix metalloproteinases (MMPS). Seems to be a receptor for oligomannosidic glycans. In vitro, promotes outgrowth of astrocytic processes. [UniProtKB/Swiss-Prot Function]

### Product images:



Circular map for MR203655