

Product datasheet for MR203637

Clpp (NM_017393) Mouse Tagged ORF Clone

Product data:

Product Type:	Expression Plasmids
Product Name:	Clpp (NM_017393) Mouse Tagged ORF Clone
Tag:	Myc-DDK
Symbol:	Clpp
Synonyms:	AU019820; D17Wsu160e
Mammalian Cell Selection:	Neomycin
Vector:	pCMV6-Entry (PS100001)
E. coli Selection:	Kanamycin (25 ug/mL)
ORF Nucleotide Sequence:	>MR203637 ORF sequence Red=Cloning site Blue=ORF Green=Tags(s)

TTTTGTAATACGACTCACTATAGGGCGGCCGGAATTCGTCGACTGGATCCGGTACCGAGGAGATCTGCC
GCC**CGATCGCC**

ATGTGGCCAGAGTGCTGCTGGGGAGGCCCGGGTGGCTGTGGACGGATGTCGCGCTCTGTTGTCTCGCC
TTGCCGTGCAATTTCTCCCGCCATGGACTGCTGTGAGCTGCTCACCCCTGCGGAGGAGCCTGCATGGAAC
TGGCAGCGAGCTTTCCCGCTCATCCCCATAGTGGTGGAGCAGACGGGTCGAGGCGAGCGCCTTATGAC
ATATACTCGAGGCTGTTGCGGGAACGCATCGTGTGCGTCATGGGCCGATTGACGACAGTGTGGCCAGTC
TGGTCAATTGCCAGCTGTTGTTCTTACAGTCTGAAAGCAACAAGAAGCCATTTCATATGTATATCAACAG
CCCAGGTGGTGTGTAAGTGCAGGCTGGCCATCTACGACACAATGCAGTACATCCTGAACCCCATCTGC
ACGTGGTGTGTTGGACAGGCTGCCAGCATGGGCTCCCTGCTCCTCGCTGCTGGCAGCCCGGGCATGCGCC
ATTCAGTGCCTAATCCAGAATCATGATCCACCAGCCCTCTGGAGGAGCCAGGGGCAAGCCACAGACAT
CGCCATCCAGGCAGAGGAAATCATGAAGCTGAAAAAGCAGCTATACAACATCTACGCCAAACACACCAAG
CAGAGCTACAGGTGATCGAGTCAGCAATGGAGAGGGACCGCTACATGAGCCCATGGAGGCCAAGAGT
TTGGCATCTTGGACAAGGTCTTGGTCCACCCACCTCAGGACGGGGAGGATGAGCCAGAATGGTACAGAA
GGAGACTGCCACAGCGCCGACGGATCCTCCTGCCCCACAAGCACC

ACGCGTACGCGGCCGCTCGAGCAGAAACTCATCTCAGAAGAGGATCTGGCAGCAAATGATATCCTGGATT
ACAAGGATGACGACGATAAGGTTTAA



[View online »](#)

Protein Sequence: >MR203637 protein sequence
 Red=Cloning site Green=Tags(s)

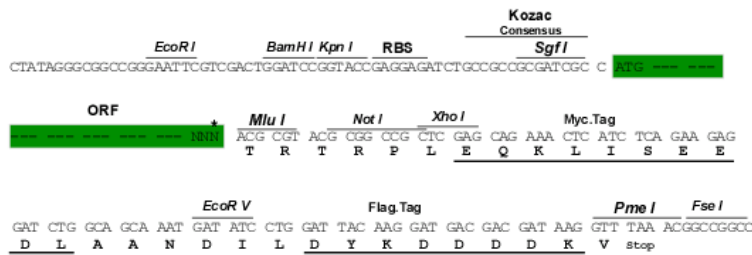
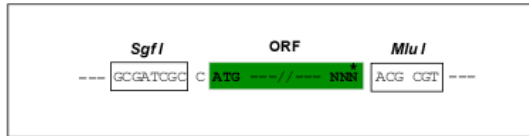
MWPRVLLGEARVAVDGCRALLSRLAVHFSPPWTAVSCSPLRRLHGTATRAFPLIPIVVEQTGRGERAYD
 IYSRLLRERIVCVMGPIDDSVASLVIAQLLFLQSESNKKPIHMYINSPGGVVTAGLAIYDTMQYILNPIC
 TWCVGQAASMGSLLLAAGSPGMRHSLPNSRIMIHQPSSGGARGQATDIAIQAEEMKLLKQLYNIYAKHTK
 QSLQVIESAMERDRYMSPMEAQEFGILDKVLVHPPQDGEPELVQKETATAPTDPPAPTST

TRTRPLEQKLISEEDLAANDILDYKDDDDKV

Restriction Sites: SgfI-MluI

Cloning Scheme:

Cloning sites used for ORF Shuttling:



* The last codon before the Stop codon of the ORF

ACCN: NM_017393

ORF Size: 819 bp

OTI Disclaimer: The molecular sequence of this clone aligns with the gene accession number as a point of reference only. However, individual transcript sequences of the same gene can differ through naturally occurring variations (e.g. polymorphisms), each with its own valid existence. This clone is substantially in agreement with the reference, but a complete review of all prevailing variants is recommended prior to use. [More info](#)

OTI Annotation: This clone was engineered to express the complete ORF with an expression tag. Expression varies depending on the nature of the gene.

Components: The ORF clone is ion-exchange column purified and shipped in a 2D barcoded Matrix tube containing 10ug of transfection-ready, dried plasmid DNA (reconstitute with 100 ul of water).

Reconstitution Method:

1. Centrifuge at 5,000xg for 5min.
2. Carefully open the tube and add 100ul of sterile water to dissolve the DNA.
3. Close the tube and incubate for 10 minutes at room temperature.
4. Briefly vortex the tube and then do a quick spin (less than 5000xg) to concentrate the liquid at the bottom.
5. Store the suspended plasmid at -20°C. The DNA is stable for at least one year from date of shipping when stored at -20°C.

RefSeq: [NM_017393.2](#)

RefSeq Size: 1207 bp

RefSeq ORF: 819 bp

Locus ID: 53895

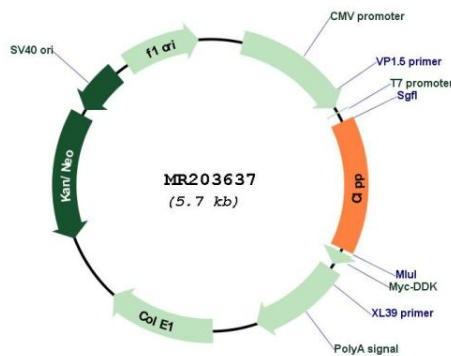
UniProt ID: [O88696](#)

Cytogenetics: 17 29.61 cM

MW: 29.8 kDa

Gene Summary: Protease component of the Clp complex that cleaves peptides and various proteins in an ATP-dependent process. Has low peptidase activity in the absence of CLPX. The Clp complex can degrade CSN1S1, CSN2 and CSN3, as well as synthetic peptides (in vitro) and may be responsible for a fairly general and central housekeeping function rather than for the degradation of specific substrates (By similarity).[UniProtKB/Swiss-Prot Function]

Product images:



Circular map for MR203637