

Product datasheet for MR203633

Luc7l (BC034135) Mouse Tagged ORF Clone

Product data:

Product Type:	Expression Plasmids
Product Name:	Luc7l (BC034135) Mouse Tagged ORF Clone
Tag:	Myc-DDK
Symbol:	Luc7l
Synonyms:	1810045C04Rik; 2410018D03Rik
Mammalian Cell Selection:	Neomycin
Vector:	pCMV6-Entry (PS100001)
E. coli Selection:	Kanamycin (25 ug/mL)
ORF Nucleotide Sequence:	>MR203633 ORF sequence Red=Cloning site Blue=ORF Green=Tags(s)

TTTTGTAATACGACTCACTATAGGGCGGCCGGAATTCGTCGACTGGATCCGGTACCGAGGAGATCTGCC
GCC**CGATCGCC**

ATGGATTTAGGAGAATGTACAAAATCCACGACTTGGCTCTTCGAGCAGATTATGAAATTGCAAGTAAAG
AAAGAGACCTGTTTTTTGAATTAGATGCTATGGATCACTTAGAGTCCTTCATTGCAGAGTGTGATCGGAG
AACCGAATTGCCAAAAGCGGCTGGCTGAAACACAGGAGGAAATCAGTGCAGAAGTTTCGGCTAAGGCA
GAAAAGGTACATGAATTAATGAAGAAATAGGAAACTTCTTGCTAAAGCTGAGCAGCTAGGAGCTGAAG
GAAATGTGGACGAATCCCAGAAGATTCTTATGGAAGTGGAGAAAGTTCGTGCAAAGAAAAAGAAGCAGA
GGAAGAATATAGAAATCCATGCCTGCATCCAGTTTTCAACAGCAAAAACCCGTGTTTGCAGGTTTGT
TCAGCTTACCTTGGTCTCCATGACAATGACCGTCGGCTTCAGACCACTTCGGGGCAAGTTACACCTGG
GGTTTATTAGATCCGGGAGAAGCTTGATCAGTTGAGGAAAACCTGTGGCTGAAAAACAGGAAAAAGAAA
TCAGGATCGATTGAGGAGAAGAGAGGAGAGAGCGAGAAGAGCGCTGGGCAGGAGGTCTGGATCAAGA
ACCCGAGATCGCAGAAGGTCACGCTCCCGGATCGTCGACGGAGGCGGTCTAGGTCTACCTCCAGAGAGC
GGCGGAAGTTTTCCCGTCCAGATCCCGAGATAGATACAGGCCCATCGCAGCCGTTCCCGGAGCCACAG
CCGGGGTACCGCCGGGCTTCCAGGGACCGGAGTACAAAATAAAG

ACGCGTACGCGGCCGCTCGAGCAGAACTCATCTCAGAAGAGGATCTGGCAGCAAATGATATCCTGGATT
ACAAGGATGACGACGATAAGGTTTAA



Protein Sequence: >MR203633 protein sequence
 Red=Cloning site Green=Tags(s)

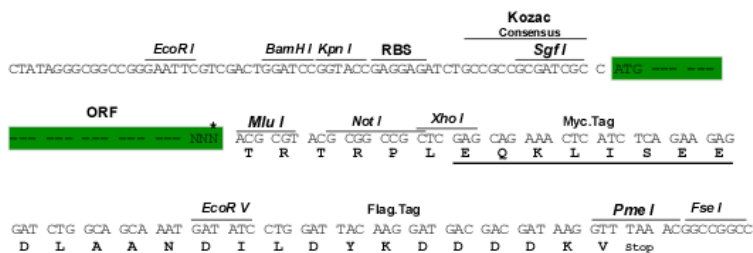
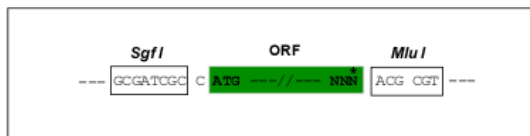
MDLGECTKIHDLALRADYEIASKERDLFFELDAMDHLESFIAECDRRTELAKKRLAETQEEISAEVSAKA
 EKVELHNEEIGKLLAKAEQLGAEGNVDESQKILMEVEKVRACKKEAEEYRNSMPASSFQQKLRVCEVC
 SAYLGLHDNDRRLADHFGGKLHLGFIQIREKLDQLRKTVAEKQEKRNDRLRRREEREREERLGRRS
 TRDRRRSRDRRRRRSRSTSRRRRKFSRSRSRDRYRRHRSRSRSHSRGHRRASDRSTKYK

TRTRPLEQKLISEEDLAANDILDYKDDDDKV

Restriction Sites: SgfI-MluI

Cloning Scheme:

Cloning sites used for ORF Shuttling:



* The last codon before the Stop codon of the ORF

ACCN: BC034135

ORF Size: 816 bp

OTI Disclaimer: The molecular sequence of this clone aligns with the gene accession number as a point of reference only. However, individual transcript sequences of the same gene can differ through naturally occurring variations (e.g. polymorphisms), each with its own valid existence. This clone is substantially in agreement with the reference, but a complete review of all prevailing variants is recommended prior to use. [More info](#)

OTI Annotation: This clone was engineered to express the complete ORF with an expression tag. Expression varies depending on the nature of the gene.

Components: The ORF clone is ion-exchange column purified and shipped in a 2D barcoded Matrix tube containing 10ug of transfection-ready, dried plasmid DNA (reconstitute with 100 ul of water).

Reconstitution Method:

1. Centrifuge at 5,000xg for 5min.
2. Carefully open the tube and add 100ul of sterile water to dissolve the DNA.
3. Close the tube and incubate for 10 minutes at room temperature.
4. Briefly vortex the tube and then do a quick spin (less than 5000xg) to concentrate the liquid at the bottom.
5. Store the suspended plasmid at -20°C. The DNA is stable for at least one year from date of shipping when stored at -20°C.

RefSeq: [BC034135](#), [AAH34135](#)

RefSeq Size: 1953 bp

RefSeq ORF: 818 bp

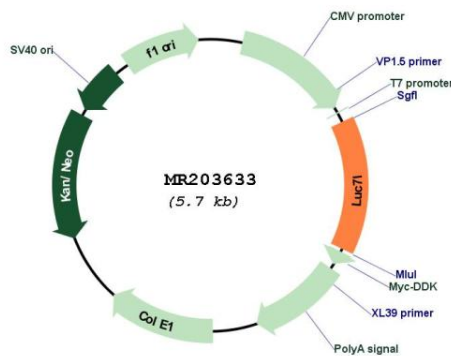
Locus ID: 66978

Cytogenetics: 17 13.09 cM

MW: 71.6 kDa

Gene Summary: May bind to RNA via its Arg/Ser-rich domain.[UniProtKB/Swiss-Prot Function]

Product images:



Circular map for MR203633