

Product datasheet for **MR203630**

Cutc (NM_001113562) Mouse Tagged ORF Clone

Product data:

Product Type:	Expression Plasmids
Product Name:	Cutc (NM_001113562) Mouse Tagged ORF Clone
Tag:	Myc-DDK
Symbol:	Cutc
Synonyms:	2310039I18Rik; AI326282; CGI-32
Mammalian Cell Selection:	Neomycin
Vector:	pCMV6-Entry (PS100001)
E. coli Selection:	Kanamycin (25 ug/mL)
ORF Nucleotide Sequence:	>MR203630 ORF sequence Red=Cloning site Blue=ORF Green=Tags(s)

TTTTGTAATACGACTCACTATAGGGCGGCCGGGAATTCGTCGACTGGATCCGGTACCGAGGAGATCTGCC
GCC**CGATCGCC**

ATGAAGAAAGGGGCTTCTTGCGAGCGGAAACAGGCGTGGATATCGTCGGGAAGGCGGGAGCAGGAAATG
GATTTCTTATGGAAGTGTGTAGATTCGGTGGAGTCCGCTGTGAATGCAGAAAGAGGAGGTGCTGGTCCG
GATTGAACTGTGCTCTGGTCTACTGGAGGGAGGAACCACCCAGTATGGGTGTTCTTCAAGTAGTAAAA
CAGAGTGTTCCAGATCCCAGTGTGATGATCCGCCACGCGGAGGCGACTTCTATACTCCGACCGTG
AAGTTGAGGTGATGAAGGCTGACATTCGCCTTGCCAAGCTTTATGGTGCCGATGGTTTGGTGTGGGGC
ATTGACTGAAGATGGACACATTGACAAAGAGCTATGCTTGTCTTGTAGCTCTTGGCCGCTCTGCCG
GTCACCTTCCACAGAGCCTTGTATGTTTATGATCCAATGGCAGCTCTGGAGACCCTCCTAACCTTAG
GATTTGAACGCGTCTGACCAAGTGGATGCGACAGCTCAGCACTGGAAGGACTGCCTCTAATAAAGCAACT
CATAGACCAGGCAAAAGGAGGATTGTGGTAAATGCCAGGAGGTGGAATAACAGATAAAAACTGCAAAGG
ATCCTTGAGGGTCCGGTGTACAGAATCCACTGCTCTGCCGATCTCCAGAGACTCAGGAATGAAGT
TTCGAAATTCCTCTGTCGCAATGGGAGCTTCGCTTGTCTCATTGAGATATTCTCTAAAGGTAACAGATGT
GACAAAAGTAAGGACTTTGAATGCAATTGCAAAGGACGTCCTAGTT

AG**CGGACCG**ACGCGTACGCGGCCGCTCGAGCAGAACTCATCTCAGAAGAGGATCTGGCAGCAAATGATATCC
TGGATTACAAGGATGACGACGATAAAGTTTAA



[View online »](#)

Protein Sequence: >MR203630 protein sequence
 Red=Cloning site Green=Tags(s)

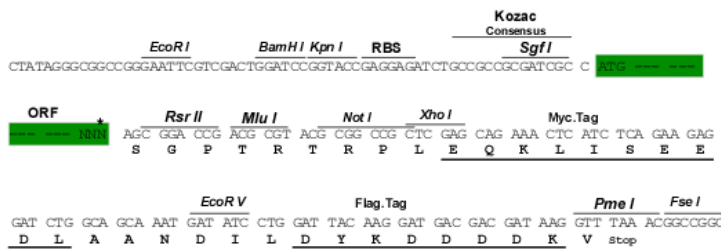
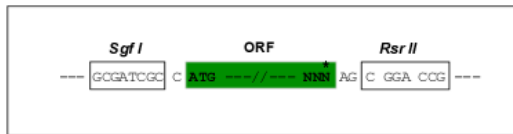
MKKGASCERKQAWISSGKAGAGNGFLMEVCVDSVESAVNAERGGAGRIELCSGLLEGTTSPMGVLQVVK
 QSVQIPVFMIRPRGGDFLYSDREVEVMKADIRLAKLYGADGLVFGALTEDGHIDKELCLSLVALCRPLP
 VTFHRAFDMVHDPMAALETLLTLGFERVLTSGCDSSALEGLPLIKQLIDQAKGRIVVMPPGGGITDKNLQR
 ILEGSGATEFHCSARSSRDSGMKFRNSSVAMGASLAHSEYSLKVTDVTKVRTLNAIAKDVLV

SGPTRTRPLEQKLI SEEDLAANDILDYKDDDDKV

Restriction Sites: SgfI-RsrII

Cloning Scheme:

Cloning sites used for ORF Shuttling:



* The last codon before the Stop codon of the ORF

ACCN: NM_001113562

ORF Size: 819 bp

OTI Disclaimer: The molecular sequence of this clone aligns with the gene accession number as a point of reference only. However, individual transcript sequences of the same gene can differ through naturally occurring variations (e.g. polymorphisms), each with its own valid existence. This clone is substantially in agreement with the reference, but a complete review of all prevailing variants is recommended prior to use. [More info](#)

OTI Annotation: This clone was engineered to express the complete ORF with an expression tag. Expression varies depending on the nature of the gene.

Components: The ORF clone is ion-exchange column purified and shipped in a 2D barcoded Matrix tube containing 10ug of transfection-ready, dried plasmid DNA (reconstitute with 100 ul of water).

Reconstitution Method:

1. Centrifuge at 5,000xg for 5min.
2. Carefully open the tube and add 100ul of sterile water to dissolve the DNA.
3. Close the tube and incubate for 10 minutes at room temperature.
4. Briefly vortex the tube and then do a quick spin (less than 5000xg) to concentrate the liquid at the bottom.
5. Store the suspended plasmid at -20°C. The DNA is stable for at least one year from date of shipping when stored at -20°C.

RefSeq: [NM_001113562.1](#), [NP_001107034.1](#)

RefSeq Size: 1308 bp

RefSeq ORF: 819 bp

Locus ID: 66388

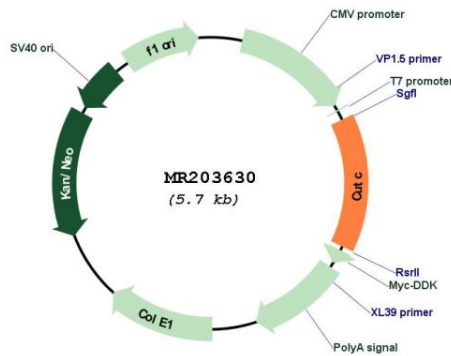
UniProt ID: [Q9D8X1](#)

Cytogenetics: 19 C3

MW: 29 kDa

Gene Summary: May play a role in copper homeostasis. Can bind one Cu(1+) per subunit (By similarity). [UniProtKB/Swiss-Prot Function]

Product images:



Circular map for MR203630