

Product datasheet for MR203629

Dkk1 (NM_010051) Mouse Tagged ORF Clone

Product data:

Product Type:	Expression Plasmids
Product Name:	Dkk1 (NM_010051) Mouse Tagged ORF Clone
Tag:	Myc-DDK
Symbol:	Dkk1
Synonyms:	mdkk-1
Mammalian Cell Selection:	Neomycin
Vector:	pCMV6-Entry (PS100001)
E. coli Selection:	Kanamycin (25 ug/mL)
ORF Nucleotide Sequence:	>MR203629 ORF sequence Red=Cloning site Blue=ORF Green=Tags(s)

TTTTGTAATACGACTCACTATAGGGCGGCCGGAATTCGTCGACTGGATCCGGTACCGAGGAGATCTGCC
GCC**CGATCGCC**

ATGATGGTTGTGTGTCAGCGGCAGCTGTCCGGTCTTGCCGTGTTTACAATGATGGCTCTCTGCAGCC
TCCCTCTGCTAGGAGCCAGTGCCACCTGAACTCAGTTCTCATCAATCCAACGCGATCAAGAACCTGCC
CCCACCGCTGGTGGTGTGGGGGCAGCCGGCTCTGCTGTGAGTGGCGCCGGGAGTTCTCTATGAG
GGCGGGAACAAGTACCAGACTCTTGACAACTACCAGCCCTACCCTTGCCTGAAGATGAGGAGTGGGCT
CTGACGAGTACTGCTCCAGCCCCAGCCGGGGCAGCCGGCGTCCGAGGTGTACAGATCTGTCTGGCTTG
CCGAAAGCGCAGGAAGCGCTGCATGAGGCACGCTATGTGCTGCCCGGGAAGTACTGCAAAAATGGAATA
TGCATGCCCTCTGACCACAGCCATTTTCCCTCGAGGGGAAATTGAGGAAAGCATCATTGAAAACTTGGTA
ATGACCACAACGCCCGCCGGGGATGGATATCCAGAAGAACCACACTGACTTCAAAAATATATCACAC
CAAAGGACAAGAAGGCTCCGTCTGCCTCCGATCATCAGACTGTGCCGAGGGCTGTGTTGTGCAAGACAC
TTCTGGTCCAAGATCTGTAACCTGTCTTAAAGAAGGTCAGGTGTGCACCAAGCACAAACGAAAGGCT
CCCACGGGCTGGAGATATTCCAGCGCTGTACTGCGGGGAAGGCTGGCTGCAGGATACAGAAAGATCA
CCATCAAGCCAGCAATTCTTAGGCTCCACACCTGCCAGAGACAC

ACGCGTACGCGGCCGCTCGAGCAGAACTCATCTCAGAAGAGGATCTGGCAGCAAATGATATCCTGGATT
ACAAGGATGACGACGATAAGGTTTAA



[View online »](#)

Protein Sequence: >MR203629 protein sequence
 Red=Cloning site Green=Tags(s)

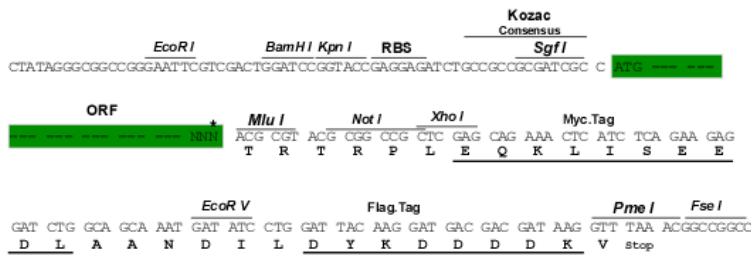
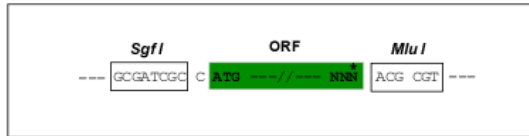
MMVVCAAAVRFLAVFTMMALCSLPLLGSATLNSVLINSNAIKNLPPLGGAGGQPGSAVSVAPGVLYE
 GGNKYQTLDNYPYPCAEDEECGSDEYCSSPSRGAAGVGGVQICLACRKRRCMRHAMCCPGNYCKNGI
 CMPSDHSHFPRGEIEESIENLGNHNAAGDGYPRRTLTSKIYHTKGQEGSVCLRSSDCAAGLCCARH
 FWSKICKPVLKEGQVCTKHKRKSGHGLEIFQRCYCGEGLACRIQKDDHHQASNSSRLHTCQRH

TRTRPLEQKLISEEDLAANDILDYKDDDDKV

Restriction Sites: SgfI-MluI

Cloning Scheme:

Cloning sites used for ORF Shuttling:



* The last codon before the Stop codon of the ORF

ACCN: NM_010051

ORF Size: 819 bp

OTI Disclaimer: The molecular sequence of this clone aligns with the gene accession number as a point of reference only. However, individual transcript sequences of the same gene can differ through naturally occurring variations (e.g. polymorphisms), each with its own valid existence. This clone is substantially in agreement with the reference, but a complete review of all prevailing variants is recommended prior to use. [More info](#)

OTI Annotation: This clone was engineered to express the complete ORF with an expression tag. Expression varies depending on the nature of the gene.

Components: The ORF clone is ion-exchange column purified and shipped in a 2D barcoded Matrix tube containing 10ug of transfection-ready, dried plasmid DNA (reconstitute with 100 ul of water).

Reconstitution Method:

1. Centrifuge at 5,000xg for 5min.
2. Carefully open the tube and add 100ul of sterile water to dissolve the DNA.
3. Close the tube and incubate for 10 minutes at room temperature.
4. Briefly vortex the tube and then do a quick spin (less than 5000xg) to concentrate the liquid at the bottom.
5. Store the suspended plasmid at -20°C. The DNA is stable for at least one year from date of shipping when stored at -20°C.

RefSeq: [NM_010051.3](#), [NP_034181.2](#)

RefSeq Size: 2245 bp

RefSeq ORF: 819 bp

Locus ID: 13380

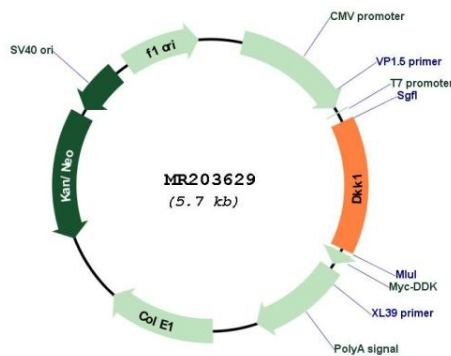
UniProt ID: [O54908](#)

Cytogenetics: 19 C1

MW: 29.3 kDa

Gene Summary: Antagonizes canonical Wnt signaling by inhibiting LRP5/6 interaction with Wnt and by forming a ternary complex with the transmembrane protein KREMEN that promotes internalization of LRP5/6 (PubMed:18524778). Inhibits the pro-apoptotic function of KREMEN1 in a Wnt-independent manner, and has anti-apoptotic activity (PubMed:26206087). Plays a role in limb development; attenuates Wnt signaling in the developing limb to allow normal limb patterning (PubMed:18505822).[UniProtKB/Swiss-Prot Function]

Product images:



Circular map for MR203629