

## Product datasheet for **MR203619**

### Prpf39 (NM\_177806) Mouse Tagged ORF Clone

#### Product data:

Product Type:	Expression Plasmids
Product Name:	Prpf39 (NM_177806) Mouse Tagged ORF Clone
Tag:	Myc-DDK
Symbol:	Prpf39
Synonyms:	Srcs1
Mammalian Cell Selection:	Neomycin
Vector:	pCMV6-Entry (PS100001)
E. coli Selection:	Kanamycin (25 ug/mL)



[View online »](#)

ORF Nucleotide  
Sequence:

>MR203619 representing NM\_177806  
Red=Cloning site Blue=ORF Green=Tags(s)

TTTTGTAATACGACTCACTATAGGGCGGCCGGAATTCGTCGACTGGATCCGGTACCGAGGAGATCTGCC  
GCCGCGATCGCC

ATGCAAACTCCCACATGGAAGAGTACAGAACTCTGATAATGGCAGCACAGGCAACAGTTCAGAGGTAG  
CAGTAGTAGAGCATCCAGATTTTAGTACTGAGATTATGAACGTTACGGAGATGGAGCAGTCGCCTGATGC  
CTCTCCCAGCGCACATGCATCTACAGAAGAAAATGAAATGGCAAATGCTGTGAACCTCCAGTGACAGAA  
GCAGAAGGAGACTTCCCTCCAGAGTTTAAAAATTTGGAAAACAGTAGAAATGAATCCTCAGGATTTTA  
CAGGCTGGGTATATTTGCTTCAGTATGTAGAACAGGAGAATCATTGATGGCTGCCAGGAAAGCATTGGA  
CAAATTTTCGTACACTACCCGATTGCTATGGTTACTGGAAAAAGTATGCAGACCTTAAAAAGCGACAT  
GACAACATTAACAATCAGATGAGGTTTATCGACGGGGGCTTCAGGCAATACCTCTTAGTGTGATCTTT  
GGATACATTATAAACTTCTTGAAGAAAACATTTGGACCCTGGTATCAGGAGACAAACTACAATAAG  
AGGAACTTTTGGCATGTGTTCTAGCTGCAGGAACAGATTTTCGATCTGACAAATTATGGGAAATGTAT  
ATAAACTGGGAGAATGAACAGGGAAATCTGCGAGAAGTTACAGCTGTATACGATCGTATTCTTGGTATTC  
CAACACAGCTGTACAGTCATCATTTTTAGAGATTTAAAGAACATGTACAAAATAACTTGCCTAGAGATCT  
TTAACTGGTGAACAGTTTATTCAGCTGAGAAGGGAATTAGCTTCTGTAATGGACACAGTGGTATGAC  
GGCCCTCCTGGTATGACCTTCCATCAGGAATTGAAGACATAACTGATCCAGCAAAGCTAATTACTGAAA  
TAGAAAATATGAGACACAGAATCATTGAAATTCATCAAGAAATGTTTAAATATAATGAGCATGAAGTTAG  
TAAGAGGTGGACATTTGAAGAAGGTATTAAGAACCTTATTTTCATGTGAAACCATTGGAAAAGGCTCAG  
CTAAAAAAGTGGAAAGAACTTAGAATTCGAAATTTGAAAATGGGACTCATGAAAGAGTTGTGGTTCTCT  
TTGAAAGATGTGCATATCTTGTGCCCTCTATGAGGAGTTTTGGATTAAGTATGCCAAGTACATGGAAAA  
CCATAGCATTGAAGGAGTGAGGCATGTCTTCAGCAGAGCTTGTACTGTTACCTCCCAAAGAAACCCATG  
GCACACATGCTTTGGCAGCTTTTGGGAACAACAGGGGAATTAATGAAGCCAGGATTATCTTGAGAA  
CGTTTGAAGAATGTGTTCTAGGATTGGCAATGGTTCGATTGCGAAGAGTAAGTTTGAACGACGGCATGG  
AAATATGGAAGAAGCCGAACATTTGCTTCAGGATGCTATAAAGAATGCCAAATCAATAATGAGTCATCA  
TTTTATGCTATCAAAGTACCCGACATCTTTCAAATACAGAAAAATCTTCAAATCAAGAAAGGTAC  
TTTTGGAAGCAATCGAAAAAGATAAGGAGAACACAAAGTTATACCTCAATTTACTTGAATGGAATACAG  
TTGTGACCTCAAGCAAAATGAAGAAAATATCCTCAATTGCTTTGACAAAGCCATACATGGTTCATTGCCT  
ATTAATAATGGAATTACATTTTCTCAAAGAAAAGTGAATTCCTTGAAGATTTTGGTTCAGATGTTAATA  
AGCTTCTGAATGCATATGATGAACACCAAACACTTCTAAAAGAACAGGACTTTTAAAAAGGAAAGCTGA  
AAATGGCTCAGAAGAACCAGAAGAAAAGAAAGCACACACAGAAGATTTGTCATCAGCACAGATCATTGAT  
GGGATTTACAGGCAATCAAGCTGCATATAATTACAGTGCCTGGTACCAGTACAATTATCAGAATCCTT  
GGAATTATGGACAGTATTATCCTCCACCTCCAAT

ACGCGTACGCGGCCGCTCGAGCAGAACTCATCTCAGAAGAGGATCTGGCAGCAATGATATCCTGGATT  
ACAAGGATGACGACGATAAGGTTTAA

**Protein Sequence:** >MR203619 representing NM\_177806  
 Red=Cloning site Green=Tags(s)

MQNSHMEEYRNSDNGSTGNSSEVAVVEHPDFSTEIMNVTEMEQSPDASPSAHASTEENEMANAVNLPVTE  
 AEGDFPPEFEKFWKTVMNPQDFGWVYLLQYVEQENHLMAARKAFDKFFVHYPCYGYWKYADLEKRH  
 DNIKQSDVEYRRGLQAIPLSVDLWIHYINFLKETLDPGDQETNTTIRGTFEHAVLAAGTDFRSDKLEWEM  
 INWENEQGNLREVTAVYDRILGIPTQLYSHHFQRFKEHVQNNLPRDLLTGEQFIQLRRELASVNGHSGDD  
 GPPGDDLPSGIEDITDPAKLITEIENMRHRIIEIHQEMFNNEHEVSKRWTFEEGIKRPYFHVKPLEKAQ  
 LKNWKEYLEFEIENGOTHERVVVLFERCVISICALYEEFWIKYAKYMENHSIEGVRHVFSRACTVHLPKPKM  
 AHMLWAAFEEQQGNINEARIILRTFEECVLGLAMVRLRRVSLERRHGMEEAEHLLQDAIKNAKSNNESS  
 FYAIKLARHLFKIQKNLPSRKVLLLEAIEKDKENTKLYLNLEMEYSCDLKQNEENILNCFDKAIHGSLP  
 IKMRITFSQRKVEFLEDFGSDVNKLLNAYDEHQTLKKEQDTLKRKAENGSEEPKKAHTEDLSAQIID  
 GDQLANQAAYNYSAWYQYNYQNPWNYGQYPPPT

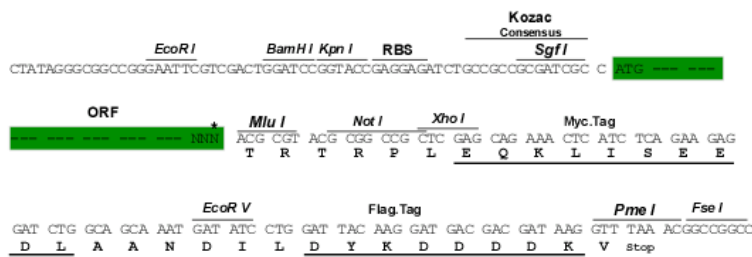
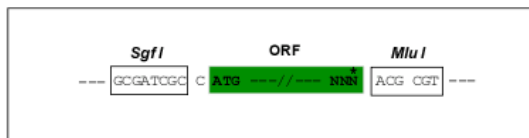
TRTRPLEQKLISEEDLAANDILDYKDDDDKV

**Chromatograms:** [https://cdn.origene.com/chromatograms/mm9085\\_g06.zip](https://cdn.origene.com/chromatograms/mm9085_g06.zip)

**Restriction Sites:** SgfI-MluI

**Cloning Scheme:**

Cloning sites used for ORF Shuttling:



**ACCN:** NM\_177806

**ORF Size:** 1995 bp

**OTI Disclaimer:** The molecular sequence of this clone aligns with the gene accession number as a point of reference only. However, individual transcript sequences of the same gene can differ through naturally occurring variations (e.g. polymorphisms), each with its own valid existence. This clone is substantially in agreement with the reference, but a complete review of all prevailing variants is recommended prior to use. [More info](#)

**OTI Annotation:** This clone was engineered to express the complete ORF with an expression tag. Expression varies depending on the nature of the gene.

**Components:** The ORF clone is ion-exchange column purified and shipped in a 2D barcoded Matrix tube containing 10ug of transfection-ready, dried plasmid DNA (reconstitute with 100 ul of water).

- Reconstitution Method:**
1. Centrifuge at 5,000xg for 5min.
  2. Carefully open the tube and add 100ul of sterile water to dissolve the DNA.
  3. Close the tube and incubate for 10 minutes at room temperature.
  4. Briefly vortex the tube and then do a quick spin (less than 5000xg) to concentrate the liquid at the bottom.
  5. Store the suspended plasmid at -20°C. The DNA is stable for at least one year from date of shipping when stored at -20°C.

**RefSeq:** [NM\\_177806.3](#), [NP\\_808474.2](#)

**RefSeq Size:** 4096 bp

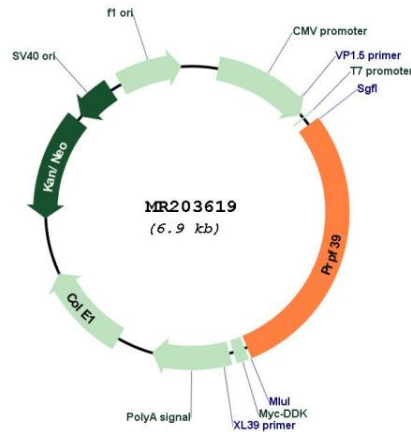
**RefSeq ORF:** 1998 bp

**Locus ID:** 328110

**Cytogenetics:** 12 C1

**MW:** 77.9 kDa

**Product images:**



Circular map for MR203619