

## Product datasheet for MR203615

### Plpp7 (NM\_145521) Mouse Tagged ORF Clone

#### Product data:

Product Type:	Expression Plasmids
Product Name:	Plpp7 (NM_145521) Mouse Tagged ORF Clone
Tag:	Myc-DDK
Symbol:	Plpp7
Synonyms:	D830019K17Rik; NET39; Ppapdc3
Mammalian Cell Selection:	Neomycin
Vector:	pCMV6-Entry (PS100001)
E. coli Selection:	Kanamycin (25 ug/mL)
ORF Nucleotide Sequence:	>MR203615 ORF sequence Red=Cloning site Blue=ORF Green=Tags(s)

TTTTGTAATACGACTCACTATAGGGCGGCCGGAATTCGTCGACTGGATCCGGTACCGAGGAGATCTGCC  
GCC**CGATCGCC**

ATGCCAGCTTCCCAGAGCCGGGCCCGTCCAGGGATCGCAACAATGTCCTCAACCGGGCTGAGTTCCTGT  
CCCTGAACCAGCCCCCAAGGGGACCCAGGAGCCAGAAGCTCAGGTAGGAAGGCCTCGGGGCCCTCAAC  
ACAACCCACCCTCCAGCGACGGGGCACGGGAGCGTCGCCAGTCACAGCAGCTGCCGAGGAGGACTGC  
ATGCAGCTGAACCCCTCATTCAAGGGCATCGCCTCAACTCCCTGCTGGCTATTGACATCTGCATGTCCA  
AGCGACTGGGGTGTGTGCCGGCCGGGTCATCCTGGGCCAGCGCCGCTCCATGGTCAAGCTCATTGG  
CATCACAGGCCACGGCATTCCCTGGATCGGGGACCATCCTCTGCCTGGTGAGAAGCAGCACCCCTGGCT  
GGCCAAGAGGTGCTCATGAACCTGCTGCTAGCCCTGCTCTGGACATCATGACAGTGGCTGGAGTCCAGA  
AGCTCATCAAGCGCCGCGGCCATATGAGACCAGCCCTGGGCTCCTGGACTACCTCACCATGGACATCTA  
TGCCTTCCCTGCCGGCCACGCCAGCCGTGCCGCCATGGTGTCCAAGTTCTTCCCTGAGCCACCTGGTGCTG  
GCGGTGCCACTGCGCGTGTGCTGGTGTCTGGCCCTTCTGCGTGGGCTTGTCTCGGGTGTGATGATCGGAC  
GCCACCATTACAGACGTCATCTCAGGCTTTCATCATCGGCTACTCCAGTTCGGCTGGTGGAGCTCGT  
GTGGATGTCTCCAACACCTGCCAGATGCTCATCTCTGCCTGG

**ACGCGT**ACGCGGCCGCTCGAGCAGAAACTCATCTCAGAAGAGGATCTGGCAGCAAATGATATCCTGGATT  
ACAAGGATGACGACGATAAGGTTTAA



[View online »](#)

**Protein Sequence:** >MR203615 protein sequence  
Red=Cloning site Green=Tags(s)

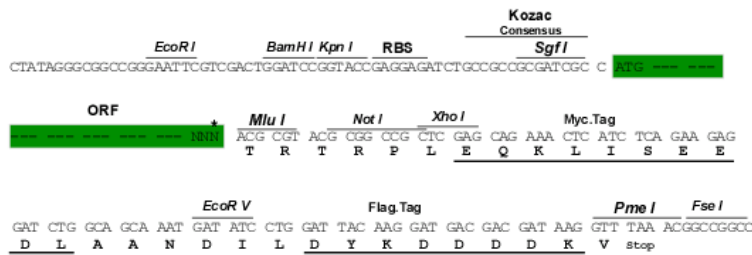
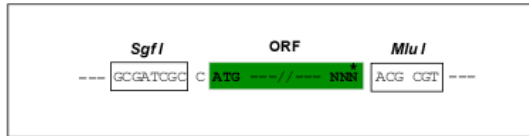
MPASQSRARARDRNNVLNRAEFLSLNQPPKGTQEPRSSGRKASGPSTQPPPSSDGARERRQSQQLPEEDC  
 MQLNPSFKGI AFNSLLAIDICMSKRLGVCAGRAASWASARSMVKLIGITGHGIPWIGGTILCLVRSSTLA  
 GQEVLMNLLLALLLDIMTVAGVQKLIKRRGPYETSPGLLDYLTMDIYAFPAGHASRAAMVSKFFLSHLVL  
 AVPLRVLLVWAFVCVGLSRVMIGRHHITDVISGFIIGYQFRLVELVWMSNTCQMLISAW

TRTRPLEQKLISEEDLAANDILDYKDDDDKV

**Restriction Sites:** Sgfl-MluI

**Cloning Scheme:**

Cloning sites used for ORF Shuttling:



**ACCN:** NM\_145521

**ORF Size:** 816 bp

**OTI Disclaimer:** The molecular sequence of this clone aligns with the gene accession number as a point of reference only. However, individual transcript sequences of the same gene can differ through naturally occurring variations (e.g. polymorphisms), each with its own valid existence. This clone is substantially in agreement with the reference, but a complete review of all prevailing variants is recommended prior to use. [More info](#)

**OTI Annotation:** This clone was engineered to express the complete ORF with an expression tag. Expression varies depending on the nature of the gene.

**Components:** The ORF clone is ion-exchange column purified and shipped in a 2D barcoded Matrix tube containing 10ug of transfection-ready, dried plasmid DNA (reconstitute with 100 ul of water).

**Reconstitution Method:**

1. Centrifuge at 5,000xg for 5min.
2. Carefully open the tube and add 100ul of sterile water to dissolve the DNA.
3. Close the tube and incubate for 10 minutes at room temperature.
4. Briefly vortex the tube and then do a quick spin (less than 5000xg) to concentrate the liquid at the bottom.
5. Store the suspended plasmid at -20°C. The DNA is stable for at least one year from date of shipping when stored at -20°C.

**RefSeq:** [NM\\_145521.4](#)

**RefSeq Size:** 1824 bp

**RefSeq ORF:** 816 bp

**Locus ID:** 227721

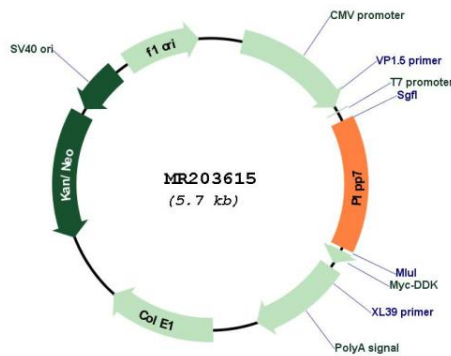
**UniProt ID:** [Q91WB2](#)

**Cytogenetics:** 2 B

**MW:** 29.7 kDa

**Gene Summary:** Plays a role as negative regulator of myoblast differentiation, in part through effects on MTOR signaling. Has no detectable enzymatic activity. Knockdown in myoblasts strongly promotes differentiation, whereas overexpression represses myogenesis.[UniProtKB/Swiss-Prot Function]

**Product images:**



Circular map for MR203615