

Product datasheet for MR203563

Cdx1 (NM_009880) Mouse Tagged ORF Clone

Product data:

| | |
|---------------------------|---|
| Product Type: | Expression Plasmids |
| Product Name: | Cdx1 (NM_009880) Mouse Tagged ORF Clone |
| Tag: | Myc-DDK |
| Symbol: | Cdx1 |
| Synonyms: | Cdx; Cdx-1 |
| Mammalian Cell Selection: | Neomycin |
| Vector: | pCMV6-Entry (PS100001) |
| E. coli Selection: | Kanamycin (25 ug/mL) |
| ORF Nucleotide Sequence: | >MR203563 ORF sequence Red=Cloning site Blue=ORF Green=Tags(s) |

TTTTGTAATACGACTCACTATAGGGCGGCCGGAATTCGTCGACTGGATCCGGTACCGAGGAGATCTGCC
GCC**CGATCGCC**

ATGTACGTGGGCTATGTGCTGGACAAGGACTCCCCGTGTACCAAGGCCCGCCAGACCCTCCAGCCTCG
GCCTGGGCCCTCCGACCTATGCGCCCCCTGGCCCGGCCCGCGCCCCCGCAGTACCCGACTTCGCGGG
TTACACGCACGTGGAGCCGGCGCCCGCCCCCTCCGACCTGGGCTGCGCCCTCCCTGCGCCAAGGAC
GACTGGGCAGCTGCCTATGGCCCGGCCCCACGGCCTCAGCCGCCAGCCGGCCCGCTGGCCTTCGGG
CCCTCCGGACTTAGCCCGGTGCCCGCCTCCCGGCCTGGTCCCGGCATCCTGGCGCAGTCCCTCGG
GGCTCCGGGCGCACCGTCTCGCCAGGAGCGCCAAGGCGGACGCCCTACGAATGGATGCGGCGCAGCGTG
GCGGCTGCAGGCGCGGTGGCAGCGTAAGACCCGAACCAAGGACAAGTACCGTGTGGTCTACACAGACC
ACCAACGCCTAGAGCTGGAAAAGGAGTTTCACTACAGCCGGTACATCACTATCCGGCGCAAGTCCGAGCT
GGCTGCTAACCTGGGCTCACAGAGCGGCAGGTAAGATCTGGTTCCAGAACCAGCCGGGCCAAGGAGCGC
AAAGTAAACAAGAAGAACAGCAGCAGCAGCAGCCCTGCCTCCACACAGCTGCCCTGCCCTGGATG
GCACTCCACACCATCAGGGCCACCCCTAGGAAGTCTATGCCCTACTAATGCTGGCCTTCTGGGCACCC
CTCCCCAGTGCCCGTCAAGGAGGAGTTTCTACCC

ACGCGTACGCGGCCGCTCGAGCAGAACTCATCTCAGAAGAGGATCTGGCAGCAAATGATATCCTGGATT
ACAAGGATGACGACGATAAGGTTTAA



[View online »](#)

Protein Sequence: >MR203563 protein sequence
Red=Cloning site Green=Tags(s)

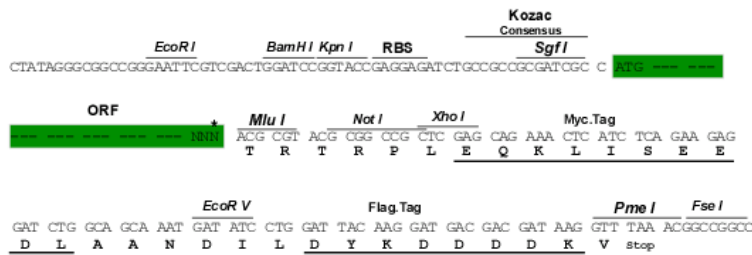
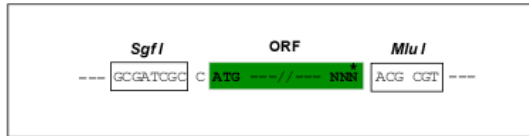
MYVGYVLDKDISPVYQGPARPSSSLGLGPPTYAPPGPAPAPPQYPDFAGYTHVEPAPAPPPTWAAPFPAPKD
 DWAAAYGPGPTASAASPAPLAFGPPPDFSPVPAPPGPGGILAQSLGAPGAPSSPGAPRRTPYEWRRSV
 AAAGGGSGKTRTKDKYRVVYTDHQRLLEKEFHYSRYITIRRKSELANLGLTERQVKIWFQNRRAKER
 KVNKKKQQQQPLPPTQLPLPLDGTPTPSGPPLGSLCPTNAGLLGTPSPVPVKEEFLP

TRTRPLEQKLISEEDLAANDILDYKDDDDKV

Restriction Sites: SgfI-MluI

Cloning Scheme:

Cloning sites used for ORF Shuttling:



ACCN: NM_009880

ORF Size: 807 bp

OTI Disclaimer: The molecular sequence of this clone aligns with the gene accession number as a point of reference only. However, individual transcript sequences of the same gene can differ through naturally occurring variations (e.g. polymorphisms), each with its own valid existence. This clone is substantially in agreement with the reference, but a complete review of all prevailing variants is recommended prior to use. [More info](#)

OTI Annotation: This clone was engineered to express the complete ORF with an expression tag. Expression varies depending on the nature of the gene.

Components: The ORF clone is ion-exchange column purified and shipped in a 2D barcoded Matrix tube containing 10ug of transfection-ready, dried plasmid DNA (reconstitute with 100 ul of water).

Reconstitution Method:

1. Centrifuge at 5,000xg for 5min.
2. Carefully open the tube and add 100ul of sterile water to dissolve the DNA.
3. Close the tube and incubate for 10 minutes at room temperature.
4. Briefly vortex the tube and then do a quick spin (less than 5000xg) to concentrate the liquid at the bottom.
5. Store the suspended plasmid at -20°C. The DNA is stable for at least one year from date of shipping when stored at -20°C.

RefSeq: [NM_009880.2](#), [NP_034010.2](#)

RefSeq Size: 1750 bp

RefSeq ORF: 807 bp

Locus ID: 12590

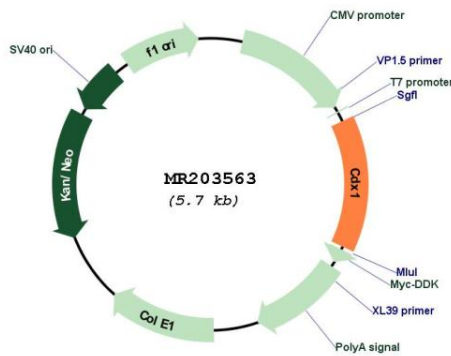
UniProt ID: [P18111](#)

Cytogenetics: 18 34.41 cM

MW: 28.5 kDa

Gene Summary: Plays a role in transcriptional regulation. Involved in activated KRAS-mediated transcriptional activation of PRKD1 in colorectal cancer (CRC) cells. Binds to the PRKD1 promoter in colorectal cancer (CRC) cells. Could play a role in the terminal differentiation of the intestine. Binds preferentially to methylated DNA.[UniProtKB/Swiss-Prot Function]

Product images:



Circular map for MR203563