

Product datasheet for MR203559

Phf7 (BC057174) Mouse Tagged ORF Clone

Product data:

Product Type:	Expression Plasmids
Product Name:	Phf7 (BC057174) Mouse Tagged ORF Clone
Tag:	Myc-DDK
Symbol:	Phf7
Synonyms:	1700006H01Rik; 1700010P14Rik; AI427892; AW555949
Mammalian Cell Selection:	Neomycin
Vector:	pCMV6-Entry (PS100001)
E. coli Selection:	Kanamycin (25 ug/mL)
ORF Nucleotide Sequence:	>MR203559 ORF sequence Red=Cloning site Blue=ORF Green=Tags(s)

TTTTGTAATACGACTCACTATAGGGCGCCGGGAATTCGTCGACTGGATCCGGTACCGAGGAGATCTGCC
GCC**CGATCGCC**

ATGAAGACTTTAAAAGAAAAAACAACATCCAAGATTGAGAAAACTATCAGGACTAAGAAGGTAACAC
AGAGGAAGCTGTCTTCAAGTCTGTTTGCCTTCTATGCCTTCAAGAACCTGGTGATCCTGAAAACTAGG
AGAATTTCTTCAGAAAGACAATCTTTGTGTCCATTATTTCTGTCTTATCCTGTCTAGCAGACTGCCTCAG
AAGGGCAACCCAACAGAGGTCTCCATGGATTTATGCCTGAAGACATCAAAGGGAGGCAGTACGGGCTT
CTAAGAAGATCTGCTTTGTATGCAAGAAAAAGGAGCTGCTATCAGATGCCAGAATGATCAGTGTGTCCA
GAACTTCCATCTGCCTTGTGGCCAAGAAAGGGGTTGCCTTTCACAGTTTTTTGGAGAGTACAAATCATAT
TGTAGAAAAATCGACCAACACAGAATCCACCAGGGGAGTTTGGGGGAGGAAAGCTGTGTCTTGTGTT
GCGAAAATTTATCCCGAACCAAGTGTGAGAACATCCAGAGCCCATGCTGTAGTCAAGCTATCTATCACCG
CAAGTGTATCCAGAAATATGCCACACATCAGCAAAGCACTTCTTCAAGTGTCCCGAGTGAACAACCGA
GAAGAGTTCCACAGGAGATGCTGAGGATGGGGATCCACATCCCAGACAGACGGTGGCGCCTCATTTTGT
GTGCTACGTGTGGATCCCATGGAACCCACGGGACTGCTCCTCTTCTTAGACCAACACGAAGAAATGGGA
ATGTAATGAGTGTTCCTGCTTCAACCACGAGT

ACGCGTACGCGGCCGCTCGAGCAGAAACTCATCTCAGAAGAGGATCTGGCAGCAAATGATATCCTGGATT
ACAAGGATGACGACGATAAGGTTTAA



[View online »](#)

Protein Sequence: >MR203559 protein sequence
Red=Cloning site Green=Tags(s)

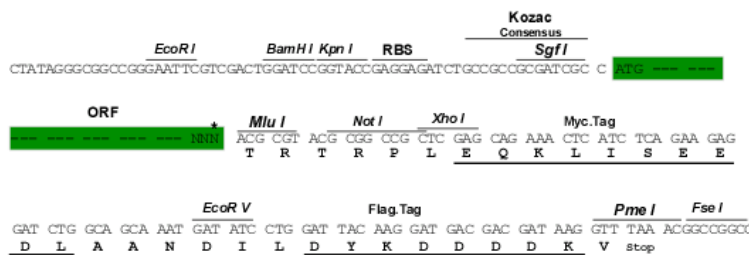
MKTLKEKNKHPRLRKTIRTKKVTRKLS SSPVCLLCLQEPGDPEKLG EFLQKDNLCVHYFCLILSSRLPQ
 KGQPNRGLHGFMPEDIKREAVRASKKICFVCKKKGAAIRCQNDQCVQNFHLP CGQERGCLSQFFGEYKSY
 CRKHRPTQNIHQGSLGEESEVLCENL SRTSVENIQSPCCSQAIYHRKCIQKYAHTSAKHFFKCPQCNNR
 EEFPEMLRMGIHIPDRRWRLILCATCGSHGTHRDCSSLRPN SKKWECECLPASTTS

TRTRPLEQKLISEEDLAANDILDYKDDDDKV

Restriction Sites: Sgfl-MluI

Cloning Scheme:

Cloning sites used for ORF Shuttling:



ACCN: BC057174

ORF Size: 804 bp

OTI Disclaimer: The molecular sequence of this clone aligns with the gene accession number as a point of reference only. However, individual transcript sequences of the same gene can differ through naturally occurring variations (e.g. polymorphisms), each with its own valid existence. This clone is substantially in agreement with the reference, but a complete review of all prevailing variants is recommended prior to use. [More info](#)

OTI Annotation: This clone was engineered to express the complete ORF with an expression tag. Expression varies depending on the nature of the gene.

Components: The ORF clone is ion-exchange column purified and shipped in a 2D barcoded Matrix tube containing 10ug of transfection-ready, dried plasmid DNA (reconstitute with 100 ul of water).

Reconstitution Method:

1. Centrifuge at 5,000xg for 5min.
2. Carefully open the tube and add 100ul of sterile water to dissolve the DNA.
3. Close the tube and incubate for 10 minutes at room temperature.
4. Briefly vortex the tube and then do a quick spin (less than 5000xg) to concentrate the liquid at the bottom.
5. Store the suspended plasmid at -20°C. The DNA is stable for at least one year from date of shipping when stored at -20°C.

RefSeq: [BC057174](#), [AAH57174](#)

RefSeq Size: 1768 bp

RefSeq ORF: 806 bp

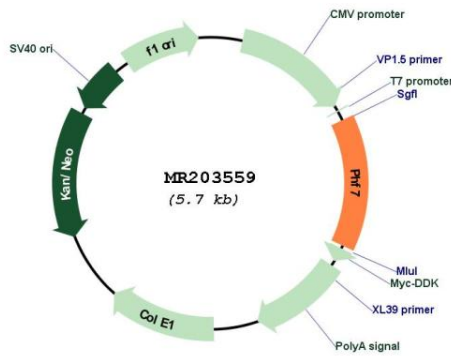
Locus ID: 71838

Cytogenetics: 14 B

MW: 30.8 kDa

Gene Summary: May play a role in spermatogenesis.[UniProtKB/Swiss-Prot Function]

Product images:



Circular map for MR203559