

Product datasheet for MR203554

Eaf1 (NM_028932) Mouse Tagged ORF Clone

Product data:

Product Type: Expression Plasmids
Product Name: Eaf1 (NM_028932) Mouse Tagged ORF Clone
Tag: Myc-DDK
Symbol: Eaf1
Synonyms: 4933403C17Rik; AI666536
Mammalian Cell Selection: Neomycin
Vector: pCMV6-Entry (PS100001)
E. coli Selection: Kanamycin (25 ug/mL)
ORF Nucleotide Sequence: >MR203554 ORF sequence
Red=Cloning site Blue=ORF Green=Tags(s)

TTTTGTAATACGACTCACTATAGGGCGGCCGGGAATTCGTCGACTGGATCCGGTACCGAGGAGATCTGCC
GCC**CGATCGCC**

ATGAACGGCACGGCGAACCCGCTGCTGGACCGGGAGGAACACTGTCTGCGGCTAGGGGAAAGCTTCGAGA
AGCGGCCGCGGGCCTCCTCCACACGATTTCGCTACGATTTAAGCCAGCATCAATAGACACTTCCTGTGA
AGGAGAACTACAGGTTGGCAAAGGAGATGAAGTACCATTACGCTGCCACACATCCCTGGGTCCACGCCG
CCAATGACGGTGTCAAAGGGAACAAGCGGCCCTATCAGAAAGACTGTGTGCTCATTATTAACCACGACA
CTGGAGAGTATGTCTGGAGAAGCTGAGCAGCAGCATTACGGTCAAGAAGACAAGAGCTGAGGGAAGCAG
TAAATCCAAGCTCGAATGGAGCAGCAGCCCGCTCGTCCCCACAGCCGTACAGCCACCCCTCCACCT
CCACCCATGCCGTTCCGAGCCCCAACGAAGCCTCCAGCTGGACCCAAAATTCTCCCTGAAGGATAACC
CCTCACCTGAGCCCCAGTTGGATGACATCAAAAGAGAGCTGAGGGCCGAGGTGGACATTATTGAGCAGAT
GAGCAGCAGCAGTGGGAGCAGCTCCTCCGACTCTGAGAGCTCCTCGGGAAGTGACGACGACGCTCCAGC
AGCGCAGGCGAAGACAATGGCCAGCCTCGCCTCCCCAGCCCTCACACCAGCAGCCCTACAACAGCAGGC
CTGCGGTGGCCAATGGAACCAGCCGGCCCAAGGAAGCTCTCAGTCTATGAACACGCTCAGAAATGACCT
GCAGCTAAGTGAGTCTGGCAGTGACAGTGATGAC

ACGCGTACGCGGCCGCTCGAGCAGAAACTCATCTCAGAAGAGGATCTGGCAGCAAATGATATCCTGGATT
ACAAGGATGACGACGATAAGGTTTAA



[View online »](#)

Protein Sequence: >MR203554 protein sequence
Red=Cloning site Green=Tags(s)

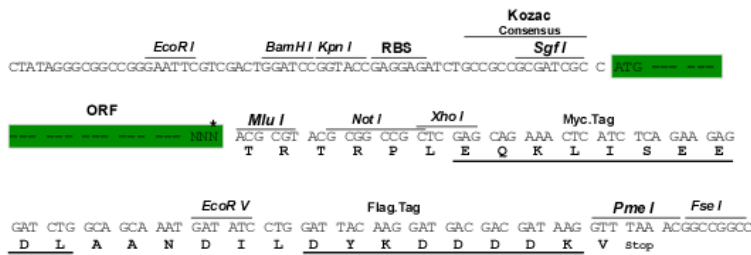
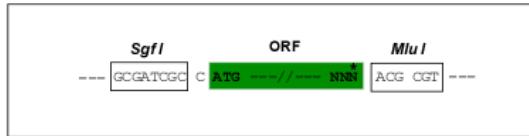
MNGTANPLLDREEHCLRLGESFEKRPRAFHTIRYDFKPA SIDTSCEGELQVKGDEVTITLPHIPGSTP
 PMTVFKGNKRPYQKDCVLIINHDTGEYVLEKLS SSIQVKKTRAEGSSKIQARMEQQPARPPQPSQPPPPP
 PPMPFRAPTKPPAGPKTSPLKDNPSPEPQLDDIKRELRAEVDII EQMSSSSGSSSSDSESSSGSDDDSSS
 SAGEDNGPASPPQPSHQQPYNSRPAVANGTSRPQGSSQLMNTLRNDLQLSESGSDSDDD

TRTRPLEQKLISEEDLAANDILDYKDDDDKV

Restriction Sites: SgfI-MluI

Cloning Scheme:

Cloning sites used for ORF Shuttling:



* The last codon before the Stop codon of the ORF

ACCN: NM_028932

ORF Size: 807 bp

OTI Disclaimer: The molecular sequence of this clone aligns with the gene accession number as a point of reference only. However, individual transcript sequences of the same gene can differ through naturally occurring variations (e.g. polymorphisms), each with its own valid existence. This clone is substantially in agreement with the reference, but a complete review of all prevailing variants is recommended prior to use. [More info](#)

OTI Annotation: This clone was engineered to express the complete ORF with an expression tag. Expression varies depending on the nature of the gene.

Components: The ORF clone is ion-exchange column purified and shipped in a 2D barcoded Matrix tube containing 10ug of transfection-ready, dried plasmid DNA (reconstitute with 100 ul of water).

Reconstitution Method:

1. Centrifuge at 5,000xg for 5min.
2. Carefully open the tube and add 100ul of sterile water to dissolve the DNA.
3. Close the tube and incubate for 10 minutes at room temperature.
4. Briefly vortex the tube and then do a quick spin (less than 5000xg) to concentrate the liquid at the bottom.
5. Store the suspended plasmid at -20°C. The DNA is stable for at least one year from date of shipping when stored at -20°C.

RefSeq: [NM_028932.1](#), [NM_028932.2](#), [NM_028932.3](#), [NM_028932.4](#), [NP_083208.1](#)

RefSeq Size: 4238 bp

RefSeq ORF: 807 bp

Locus ID: 74427

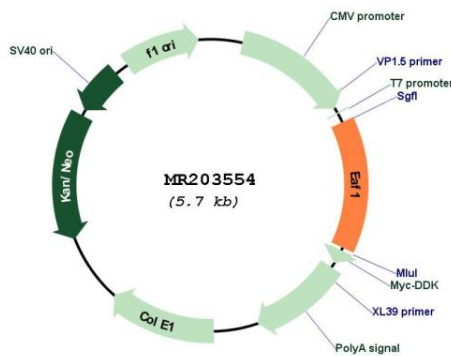
UniProt ID: [Q9D4C5](#)

Cytogenetics: 14 B

MW: 29 kDa

Gene Summary: Acts as a transcriptional transactivator of ELL and ELL2 elongation activities.[UniProtKB/Swiss-Prot Function]

Product images:



Circular map for MR203554