

## Product datasheet for **MR203528**

### **Il33 (NM\_001164724) Mouse Tagged ORF Clone**

#### Product data:

Product Type:	Expression Plasmids
Product Name:	Il33 (NM_001164724) Mouse Tagged ORF Clone
Tag:	Myc-DDK
Symbol:	Il33
Synonyms:	9230117N10Rik; Il-33; Il1f11; NF-HEV
Mammalian Cell Selection:	Neomycin
Vector:	pCMV6-Entry (PS100001)
E. coli Selection:	Kanamycin (25 ug/mL)
ORF Nucleotide Sequence:	>MR203528 ORF sequence Red=Cloning site Blue=ORF Green=Tags(s)

TTTGTGAATACGACTCACTATAGGGCGGCCGGAATTCGTCGACTGGATCCGGTACCGAGGAGATCTGCC  
GCC**CGATCGCC**

ATGAGACCTAGAATGAAGTATTCCTCACTCAAGATTTCCCGGCAAAGTTCAGCAGCACCGCAGGCGAAG  
CCCTGGTCCCGCCTTGCAAATAAGAAGATCCCAACAGAAGACCAAAGAATTCTGCCATGTCTACTGCAT  
GAGACTCCGTTCTGGCCTCACCATAAGAAAGGAGACTAGTTATTTAGGAAAGAACCCACGAAAAGATAT  
TCACTAAAATCGGGTACCAAGCATGAAGAGAATTCTCTGCCTATCCACGGGATTCTAGGAAGAGATCCT  
TGCTTGGCAGTATCCAAGCATTTGCTGCGTCTGTTGACACATTGAGCATCCAAGGAATTCACTTTTAAC  
ACAGTCTCCTGCCTCCCTGAGTACATACAATGACCAATCTGTTAGTTTTGTTTGGAGAATGGATGTTAT  
GTGATCAATGTTGACGACTCTGGAAGACCAAGAGCAAGACCAGGTGCTACTACGCTACTATGAGTCTC  
CCTGTCCTGCAAGTCAATCAGGCGACGGTGTGGATGGGAAGAAGGTGATGGTGAACATGAGTCCCATCAA  
AGACACAGACATCTGGCTGCATGCCAACGACAAGGACTACTCCGTGGAGCTTCAAAGGGGTGACGCTCG  
CCTCCGGAACAGGCCTTCTTCGTCCTTCACAAAAGTCTCGGACTTTGTTTCATTTGAATGCAAGAATC  
TTCCTGGCACTTACATAGGAGTAAAGATAACCAGCTGGCTCTAGTGGAGGAGAAAGATGAGAGCTGCAA  
CAATATTATGTTTAAGCTCTCGAAAATC

**ACGCGT**ACGCGGCGCTCGAGCAGAACTCATCTCAGAAGAGGATCTGGCAGCAAATGATATCCTGGATT  
ACAAGGATGACGACGATAAGGTTTAA



[View online »](#)

**Protein Sequence:** >MR203528 protein sequence  
Red=Cloning site Green=Tags(s)

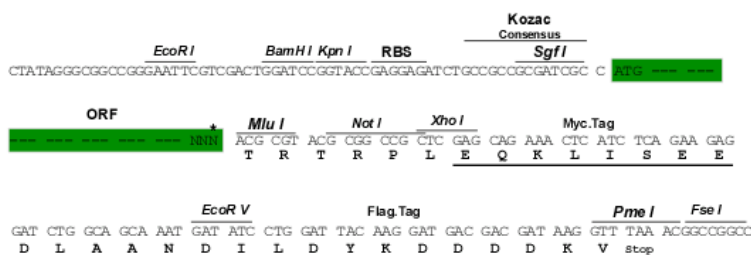
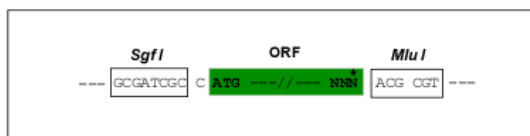
MRPRMKYSNSKISPAKFSSTAGEALVPPCKIRRSQKTKEFCHVYCMRLRSLGTIRKETSIFRKEPTKRY  
SLKSGTKHEENFSAYPRDSRKRSLGSIQAFASVDTLSIQGTSLLTQSPASLSTYNDQVSFVLENGCY  
VINVDDSGKDQEQDQVLLRYYESPCPASQSGDVGDKKVMVNMSPKIDTDIWLHANDKDYSVELQRGDVS  
PPEQAFEEVIHKSSDEVSFECKNI PGTYIGVKDNOI AIVFEKDESCNNIMEKI SKI

TRTRPLEOKLISEEDLAANDILDYKDDDDKV

Restriction Sites: Sgfl-MluI

### Cloning Scheme:

Cloning sites used for ORF Shuttling:



\* The last codon before the Stop codon of the ORF

ACCN: NM 001164724

ORF Size: 798 bp

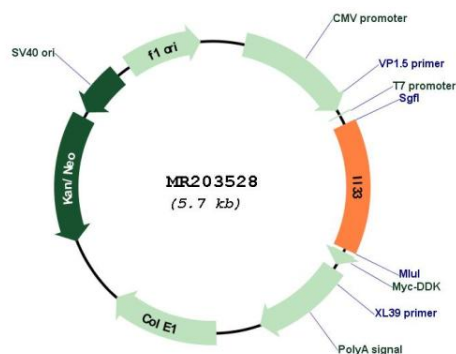
**OTI Disclaimer:** Due to the inherent nature of this plasmid, standard methods to replicate additional amounts of DNA in E. coli are highly likely to result in mutations and/or rearrangements. Therefore, OriGene does not guarantee the capability to replicate this plasmid DNA. Additional amounts of DNA can be purchased from OriGene with batch-specific, full-sequence verification at a reduced cost. Please contact our customer care team at [custsupport@origene.com](mailto:custsupport@origene.com) or by calling 301.340.3188 option 3 for pricing and delivery.

The molecular sequence of this clone aligns with the gene accession number as a point of reference only. However, individual transcript sequences of the same gene can differ through naturally occurring variations (e.g. polymorphisms), each with its own valid existence. This clone is substantially in agreement with the reference, but a complete review of all prevailing variants is recommended prior to use. More info

**OTI Annotation:** This clone was engineered to express the complete ORF with an expression tag. Expression varies depending on the nature of the gene.

<b>Components:</b>	The ORF clone is ion-exchange column purified and shipped in a 2D barcoded Matrix tube containing 10ug of transfection-ready, dried plasmid DNA (reconstitute with 100 ul of water).
<b>Reconstitution Method:</b>	<ol style="list-style-type: none"> <li>1. Centrifuge at 5,000xg for 5min.</li> <li>2. Carefully open the tube and add 100ul of sterile water to dissolve the DNA.</li> <li>3. Close the tube and incubate for 10 minutes at room temperature.</li> <li>4. Briefly vortex the tube and then do a quick spin (less than 5000xg) to concentrate the liquid at the bottom.</li> <li>5. Store the suspended plasmid at -20°C. The DNA is stable for at least one year from date of shipping when stored at -20°C.</li> </ol>
<b>Note:</b>	Plasmids are not sterile. For experiments where strict sterility is required, filtration with 0.22um filter is required.
<b>RefSeq:</b>	<u>NM_001164724.1, NP_001158196.1</u>
<b>RefSeq Size:</b>	2555 bp
<b>RefSeq ORF:</b>	801 bp
<b>Locus ID:</b>	77125
<b>UniProt ID:</b>	<u>Q8BVZ5</u>
<b>Cytogenetics:</b>	19 C1
<b>MW:</b>	30 kDa
<b>Gene Summary:</b>	<p>Cytokine that binds to and signals through the IL1RL1/ST2 receptor which in turn activates NF-kappa-B and MAPK signaling pathways in target cells. Involved in the maturation of Th2 cells inducing the secretion of T-helper type 2-associated cytokines. Also involved in activation of mast cells, basophils, eosinophils and natural killer cells. Acts as a chemoattractant for Th2 cells, and may function as an "alarmin", that amplifies immune responses during tissue injury. [UniProtKB/Swiss-Prot Function]</p>

## Product images:



Circular map for MR203528