

Product datasheet for MR203526

Cela1 (NM_033612) Mouse Tagged ORF Clone

Product data:

| | |
|---------------------------|---|
| Product Type: | Expression Plasmids |
| Product Name: | Cela1 (NM_033612) Mouse Tagged ORF Clone |
| Tag: | Myc-DDK |
| Symbol: | Cela1 |
| Synonyms: | 1810009A17Rik; 1810062B19Rik; Ela-1; Ela1; PC-TsF |
| Mammalian Cell Selection: | Neomycin |
| Vector: | pCMV6-Entry (PS100001) |
| E. coli Selection: | Kanamycin (25 ug/mL) |
| ORF Nucleotide Sequence: | >MR203526 ORF sequence Red=Cloning site Blue=ORF Green=Tags(s) |

TTTTGTAATACGACTCACTATAGGGCGGCCGGAATTCGTCGACTGGATCCGGTACCGAGGAGATCTGCC
GCC**CGATCGCC**

ATGTTGCGCTTCCTGGTGTGGCTTCCCTGGTCTGTGTGGACACAGTACCGAGGACGTTCCGAAACTG
ACGCCGCGTGGTTGGAGGGCTGAAGCCCGGAGGAACCTTGGCCGTCTCAGATTTCCCTCCAGTACCA
GTATGGAGGATCATGGCACCACACCTGTGGAGGCACCCTATCCGAAGCAACTGGGTGATGACCGCTGCT
CACTGTGTGGACAGCCCCATGACTTATCGAGTGGTTGTCGGAGAGCACAACTGAGCCAGAATGACGGCA
CCGAGCAGTATGTGAACGTGCAGAAGATTGTGTCACACCCTACTGGAACAAGAACAACGTGGTTGCAGG
CTATGACATCGCCCTGCTGCGCTTGGCCAAGAGTGTACTCAATAACTATGTCCAGCTGGGTGTTCTG
CCCCGGGAGGGAACCATCCTGGCTAACAACCTCTCCCTGCTACATCACAGGCTGGGGAAGAACCAGAACCA
ATGGGGAGCTGGCCAGACCCTGCAGCAGGCATACCTGCCAGCGTGTCTATAGCATCTGCTCCAGCTC
CTCTTACTGGGGCTCCTCTGTGAAGAATACCATGGTGTGCGCTGGTGGAGATGGAGTCCGCTCTGGATGC
CAGGGTGATTCTGGGGACCCCTCACTGCATGGTGAACGGTCAGTATGCTGTCCACGGAGTGACCAGCT
TTGTGTCCAGCATGGGCTGTAATGTCGCCAGGAAGCCACCGTCTTACCAGAGTCTCTGCTTACATTTCT
CTGGATGAATAATGTCATTGCCTCCAAC

ACGCGTACGCGGCCGCTCGAGCAGAACTCATCTCAGAAGAGGATCTGGCAGCAAATGATATCCTGGATT
ACAAGGATGACGACGATAAGGTTTAA



Protein Sequence: >MR203526 protein sequence
 Red=Cloning site Green=Tags(s)

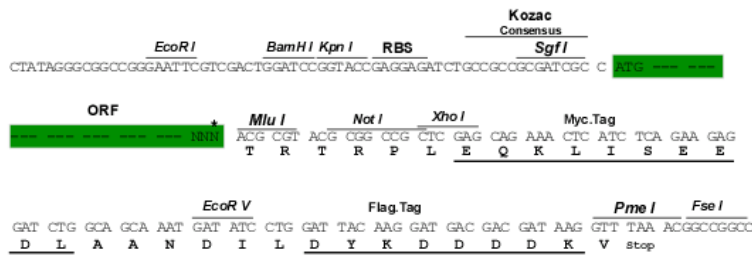
MLRFLVFASLVLCGHSTEDVPETDARVVGGAEARRNSWPSQISLQYQYGGSWHHTCGGTLIRSNWVMTAA
 HCVDSPMTYRVVVGEGHNLSONDGTQYVNVQKIVSHPHYWNKNNVAGYDIALLRLAKSVTLNINYVQLGVL
 PREGTILANNSPCYITGWRTRTNGELAQTLQQAYLPSVSYISICSSSSYWGSSVKNTMVCAGGDGVRSGC
 QGDSGGPLHCMVNGQYAVHGVTSFVSSMGCNVARKPTVFTRVSAYISWMNNVIASN

TRTRPLEQKLISEEDLAANDILDYKDDDDKV

Restriction Sites: SgfI-MluI

Cloning Scheme:

Cloning sites used for ORF Shuttling:



* The last codon before the Stop codon of the ORF

ACCN: NM_033612

ORF Size: 801 bp

OTI Disclaimer: The molecular sequence of this clone aligns with the gene accession number as a point of reference only. However, individual transcript sequences of the same gene can differ through naturally occurring variations (e.g. polymorphisms), each with its own valid existence. This clone is substantially in agreement with the reference, but a complete review of all prevailing variants is recommended prior to use. [More info](#)

OTI Annotation: This clone was engineered to express the complete ORF with an expression tag. Expression varies depending on the nature of the gene.

Components: The ORF clone is ion-exchange column purified and shipped in a 2D barcoded Matrix tube containing 10ug of transfection-ready, dried plasmid DNA (reconstitute with 100 ul of water).

Reconstitution Method:

1. Centrifuge at 5,000xg for 5min.
2. Carefully open the tube and add 100ul of sterile water to dissolve the DNA.
3. Close the tube and incubate for 10 minutes at room temperature.
4. Briefly vortex the tube and then do a quick spin (less than 5000xg) to concentrate the liquid at the bottom.
5. Store the suspended plasmid at -20°C. The DNA is stable for at least one year from date of shipping when stored at -20°C.

RefSeq: [NM_033612.2](#)

RefSeq Size: 1124 bp

RefSeq ORF: 801 bp

Locus ID: 109901

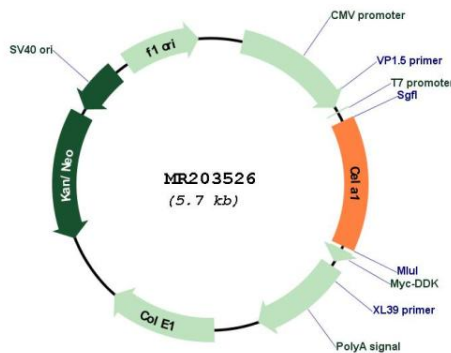
UniProt ID: [Q91X79](#)

Cytogenetics: 15 56.38 cM

MW: 28.9 kDa

Gene Summary: Acts upon elastin.[UniProtKB/Swiss-Prot Function]

Product images:



Circular map for MR203526