

## Product datasheet for MR203504

### Inmt (NM\_009349) Mouse Tagged ORF Clone

#### Product data:

Product Type:	Expression Plasmids
Product Name:	Inmt (NM_009349) Mouse Tagged ORF Clone
Tag:	Myc-DDK
Symbol:	Inmt
Synonyms:	Temt
Mammalian Cell Selection:	Neomycin
Vector:	pCMV6-Entry (PS100001)
E. coli Selection:	Kanamycin (25 ug/mL)
ORF Nucleotide Sequence:	>MR203504 ORF sequence Red=Cloning site Blue=ORF Green=Tags(s)

TTTTGTAATACGACTCACTATAGGGCGCCGGGAATTCGTCGACTGGATCCGGTACCGAGGAGATCTGCC  
GCC**CGATCGCC**

ATGGAGGGCAAGGTATACATAGGAGGTGAGGACTATGAAAAGAGTTCCTCCCAAAGACTACCTGACCA  
CCTACTACAGCTTCCACTCTGGCCCCGTGGCAGAGCAGGAAATCGTAAAGTTTAGCCTGCAGAACCTCTA  
CCAGACCTTCTCTACAGGAGGTGTAGGGGGCGACGTCCTGATCGACATTGGCTCTGGCCCTACCATCTAC  
CAGCTGCTTTCAGCATGCGAGGTCTTCCGGGAGATCATTGTCCTGACTACACCCCGCAGAACCTGCAGG  
AGCTGCAGAAGTGGCTGAAGAAAGAGCCAGGAGCCTACGACTGGTCCATAGTGCAACATGCATGTGA  
GCTGGAGGGAGACAGAAGCAGGTGGCAGGAGAAGGAAGCCAAGCTCAGAAGGACAGTCACTCGTGTCTGT  
AGGTGTGATGTGACCAAGACACCCCGCTGGGGTCAAGTCAAGTCAAGTCAAGTCAAGTCAAGTCAAGT  
TTCTGGCCATGGAGTGTGCCTGCCTGATATAGATACCTACCGGGCAGCCTTGGCAGACTGGCCGGCCT  
GCTGAAACCAGGAGGGCACCTGGTGACCCTGGTACTCTGCGCTTCCAGCACTATATGGTGGGCCCAAG  
AAGTTCTCTGGGGTCTACCTAGAGAAGGAGGTGGTGGAGAAGGCTATTCAAGATGCTGGCTGTCAAGTGC  
TGAAGTGAACCTGCGTCTCCCTCAGCTACTCGGAGGCTTACTGCTCCACGACGGTTTGTGCTTTGTGGT  
GGCCCGGAAGGGTCCCAGTGCC

**ACGCGT**ACGCGGCCGCTCGAGCAGAAACTCATCTCAGAAGAGGATCTGGCAGCAAATGATATCCTGGATT  
ACAAGGATGACGACGATAAGGTTTAA



[View online »](#)

**Protein Sequence:** >MR203504 protein sequence  
Red=Cloning site Green=Tags(s)

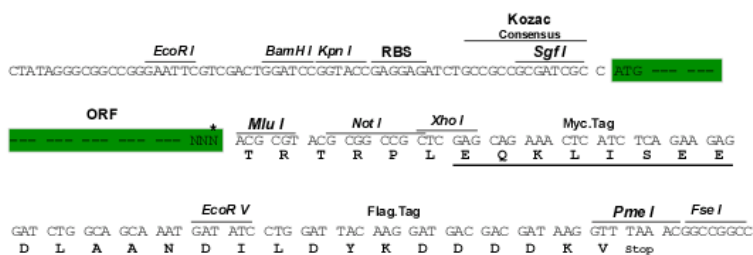
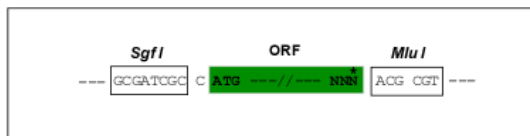
MEGKVYIGGEDYEKEFETPKDYLTYYSFHSGPVAEQEIVKFSLQNL YQTFSTGGVGGDVLIDIGSGPTIY  
 QLLSACEVFREIIVTDYTPQNLQELQKWLKKEPGAYDWSSIVQHACELEGDRSRWQEKEAKLRRTVTRVL  
 RCDVTKTPPLGSAQVPLADCVL TFLAMECACPDIDTYAALRRLAGLLKPGGHLVTLVTLRFQHYMVGPK  
 KFSGVYLEKEVVEKAIQDAGCQVLKCNVSLSYSEAYCSDHGLCFVVARKGPSA

TRTRPLEQKLISEEDLAANDILDYKDDDDKV

**Restriction Sites:** SgfI-MluI

**Cloning Scheme:**

Cloning sites used for ORF Shuttling:



\* The last codon before the Stop codon of the ORF

**ACCN:** NM\_009349

**ORF Size:** 795 bp

**OTI Disclaimer:** The molecular sequence of this clone aligns with the gene accession number as a point of reference only. However, individual transcript sequences of the same gene can differ through naturally occurring variations (e.g. polymorphisms), each with its own valid existence. This clone is substantially in agreement with the reference, but a complete review of all prevailing variants is recommended prior to use. [More info](#)

**OTI Annotation:** This clone was engineered to express the complete ORF with an expression tag. Expression varies depending on the nature of the gene.

**Components:** The ORF clone is ion-exchange column purified and shipped in a 2D barcoded Matrix tube containing 10ug of transfection-ready, dried plasmid DNA (reconstitute with 100 ul of water).

**Reconstitution Method:**

1. Centrifuge at 5,000xg for 5min.
2. Carefully open the tube and add 100ul of sterile water to dissolve the DNA.
3. Close the tube and incubate for 10 minutes at room temperature.
4. Briefly vortex the tube and then do a quick spin (less than 5000xg) to concentrate the liquid at the bottom.
5. Store the suspended plasmid at -20°C. The DNA is stable for at least one year from date of shipping when stored at -20°C.

**RefSeq:** [NM\\_009349.1](#), [NM\\_009349.2](#), [NM\\_009349.3](#), [NP\\_033375.1](#)

**RefSeq Size:** 1023 bp

**RefSeq ORF:** 795 bp

**Locus ID:** 21743

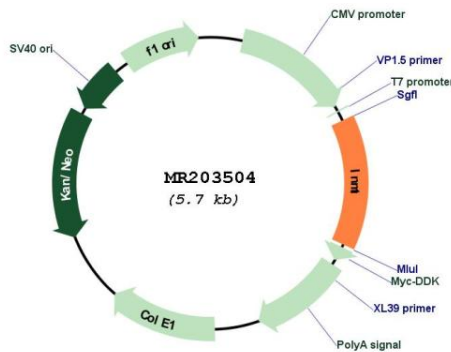
**UniProt ID:** [P40936](#)

**Cytogenetics:** 6 B3

**MW:** 29.5 kDa

**Gene Summary:** Catalyzes the N-methylation of tryptamine and structurally related compounds (By similarity). Functions as thioether S-methyltransferase and is active with a variety of thioethers and the corresponding selenium and tellurium compounds, including 3-methylthiopropionaldehyde, dimethyl selenide, dimethyl telluride, 2-methylthioethylamine, 2-methylthioethanol, methyl-n-propyl sulfide and diethyl sulfide. Plays an important role in the detoxification of selenium compounds.[UniProtKB/Swiss-Prot Function]

**Product images:**



Circular map for MR203504