

## Product datasheet for MR203472

### Pqbp1 (NM\_019478) Mouse Tagged ORF Clone

#### Product data:

Product Type:	Expression Plasmids
Product Name:	Pqbp1 (NM_019478) Mouse Tagged ORF Clone
Tag:	Myc-DDK
Symbol:	Pqbp1
Synonyms:	npw38; PQBP-1; Sfc2
Mammalian Cell Selection:	Neomycin
Vector:	pCMV6-Entry (PS100001)
E. coli Selection:	Kanamycin (25 ug/mL)
ORF Nucleotide Sequence:	>MR203472 ORF sequence Red=Cloning site Blue=ORF Green=Tags(s)

TTTTGTAATACGACTCACTATAGGGCGCCGGGAATTCGTCGACTGGATCCGGTACCGAGGAGATCTGCCGCCGCGATCGCC

ATGCCGCTTCCTGTTGCGCTGCAGACCCGCTTGGCGAAGAGGGGCATCCTCAAACATCTGGAGCCGGAGC  
CAGAGGAAGAGATTATTGCTGAAGACTACGATGATGATCCTGTTGACTATGAGGCCACCCGGATAGAGGG  
TCTGCCACCGAGCTGGTACAAGGTGTTGACCCCTTCTTGGCGACTCCCTTACTATTGGAATGTGGAGACA  
GACCTTGTGTCGTGGCTCTCACCACATGATCCTAACTTTGTCGTTACCAAATCCGCAAGAAAGTCAGGA  
ACAATAATGCAGATGCTGAGGACAAGTCGGACCGGAATCTTAAAAGGTGGACAGAAATCATGAGAAGTC  
AGATCGTAGTCATGAGAAGCCAGACAGGAGCCACGAGAAGGCAGACCGAAACCACGAGAAGAAATGACAGA  
GAACGAGAGCGCAACTACGACAAAGTGGATAGAGAGAGAGATCGGGACAGGGAACGAGAGCGGGCATTG  
ACAAGGCAGACCGGAAGAGGGCAAAGACCGACGCCACCATCGCAGAGAGGAACTGGCTCCTTACCCCAA  
GAACAAGAAAGCGACGAGCCGCAAAGATGAAGAATTAGACCCATGGACCCAGCTCATACTCAGATGCA  
CCCCGGGGCACATGGTCAACAGGACTCCCAAGAGGAACGAGGCCAAGACAGGTGCTGACACCACGGCAG  
CTGGGCCCTCTCCAGCAGCGCCCTTACCCTTCCCCGGGCGTGTGCTCCGCGCAATGCAGAAGCCTC  
CCGAACCAAACAGCAGGAC

ACGCGTACGCGGCCGCTCGAGCAGAACTCATCTCAGAAGAGGATCTGGCAGCAAATGATATCCTGGATT  
ACAAGGATGACGACGATAAGGTTTAA



**Protein Sequence:** >MR203472 protein sequence  
 Red=Cloning site Green=Tags(s)

MPLPVALQTRLAKRGILKHLEPEPEEEIIAEDYDDDPVDYEATRIEGLPPSWYKVFDPSCGLPYYWNVET  
 DLVSWLSPHDPNFVVTKSAKKVRNNNADAEDKSDRNLEKVDNRHEKSDRSHEKPDRESHEKADRNEKNDR  
 ERERNYDKVDRERDRERERERAFDKADREEGKDRRHRREELAPYPKNKATSrkDEELDPMDPSSYSDA  
 PRGTWSTGLPKRNEAKTGADTTAAGPLFQRPYPSPGAVLRANAASRtkQQD

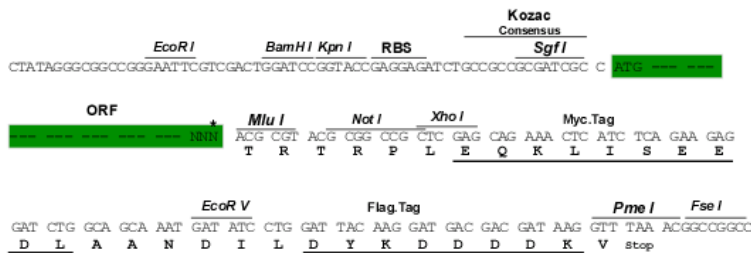
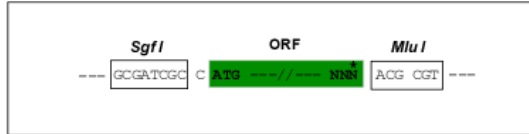
TRTRPLEQKLISEEDLAANDILDYKDDDDKV

**Restriction Sites:**

Sgfl-MluI

**Cloning Scheme:**

Cloning sites used for ORF Shuttling:



\* The last codon before the Stop codon of the ORF

**ACCN:** NM\_019478

**ORF Size:** 792 bp

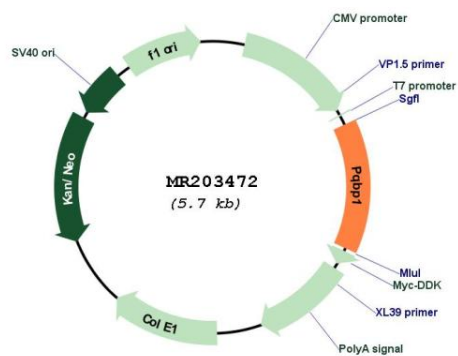
**OTI Disclaimer:** The molecular sequence of this clone aligns with the gene accession number as a point of reference only. However, individual transcript sequences of the same gene can differ through naturally occurring variations (e.g. polymorphisms), each with its own valid existence. This clone is substantially in agreement with the reference, but a complete review of all prevailing variants is recommended prior to use. [More info](#)

**OTI Annotation:** This clone was engineered to express the complete ORF with an expression tag. Expression varies depending on the nature of the gene.

**Components:** The ORF clone is ion-exchange column purified and shipped in a 2D barcoded Matrix tube containing 10ug of transfection-ready, dried plasmid DNA (reconstitute with 100 ul of water).

<b>Reconstitution Method:</b>	<ol style="list-style-type: none"><li>1. Centrifuge at 5,000xg for 5min.</li><li>2. Carefully open the tube and add 100ul of sterile water to dissolve the DNA.</li><li>3. Close the tube and incubate for 10 minutes at room temperature.</li><li>4. Briefly vortex the tube and then do a quick spin (less than 5000xg) to concentrate the liquid at the bottom.</li><li>5. Store the suspended plasmid at -20°C. The DNA is stable for at least one year from date of shipping when stored at -20°C.</li></ol>
<b>RefSeq:</b>	<u><a href="#">NM_019478.4</a></u>
<b>RefSeq Size:</b>	1248 bp
<b>RefSeq ORF:</b>	792 bp
<b>Locus ID:</b>	54633
<b>UniProt ID:</b>	<u><a href="#">Q91VJ5</a></u>
<b>Cytogenetics:</b>	X 3.56 cM
<b>MW:</b>	30.6 kDa
<b>Gene Summary:</b>	<p>Intrinsically disordered protein that acts as a scaffold, and which is involved in different processes, such as pre-mRNA splicing, transcription regulation, innate immunity and neuron development (By similarity). Interacts with splicing-related factors via the intrinsically disordered region and regulates alternative splicing of target pre-mRNA species (PubMed:23512658). May suppress the ability of POU3F2 to transactivate the DRD1 gene in a POU3F2 dependent manner (By similarity). Can activate transcription directly or via association with the transcription machinery (By similarity). May be involved in ATXN1 mutant-induced cell death (By similarity). The interaction with ATXN1 mutant reduces levels of phosphorylated RNA polymerase II large subunit (By similarity). Involved in the assembly of cytoplasmic stress granule, possibly by participating to the transport of neuronal RNA granules (By similarity). Also acts as an innate immune sensor of infection by retroviruses, by detecting the presence of reverse-transcribed DNA in the cytosol (By similarity). Directly binds retroviral reverse-transcribed DNA in the cytosol and interacts with CGAS, leading to activate the cGAS-STING signaling pathway, triggering type-I interferon production (By similarity). [UniProtKB/Swiss-Prot Function]</p>

Product images:



Circular map for MR203472