

## Product datasheet for MR203448

### Taz (NM\_181516) Mouse Tagged ORF Clone

#### Product data:

Product Type:	Expression Plasmids
Product Name:	Taz (NM_181516) Mouse Tagged ORF Clone
Tag:	Myc-DDK
Symbol:	Taz
Synonyms:	5031411C02Rik; 9130012G04Rik; AW107266; AW552613; G4.5
Mammalian Cell Selection:	Neomycin
Vector:	pCMV6-Entry (PS100001)
E. coli Selection:	Kanamycin (25 ug/mL)
ORF Nucleotide Sequence:	>MR203448 ORF sequence Red=Cloning site Blue=ORF Green=Tags(s)

TTTTGTAATACGACTCACTATAGGGCGGCCGGAATTCGTCGACTGGATCCGGTACCGAGGAGATCTGCC  
GCC**CGATCGCC**

ATGCCCTCCATGTGAAGTGGCCATCCCCGGTGCCCCGGCTCACCTGGACTCTAGCCAGCAGCGTCG  
TCATGGGCCTAGTTGGCACCTACAGCTGCTTCTGGACCAAGTACATGAACCACCTCACCGTGCACAACA  
GGAAGTGCTGTATGAGCTCATTGAGAACCAGGCCCTGCCACCCCTTATCACCGTCTCCAACCACCAG  
TCTTGCATGGATGACCCTCATCTCTGGGGATCCTAAACTCCGCCACATCTGGAACCTGAAGTTGATGC  
GTTGGACCCAGCAGCTGCAGACATCTGCTTACCAAGGAGCTGCACTCCATTTCTCAGCTTGGGCAA  
ATGTGTGCCTGTGTGTCGAGGAGATGGTGTCTACCAGAAAGGGATGGACTTCATTTGGAGAAGCTTAAC  
CATGGGGACTGGGTGCACATCTTCCCAGAAAGGAAAGTAAACATGAGTTCTGAGTTCTGCGCTTCAAAT  
GGGGAATTGGACGGCTGATTGCTGAGTGTATCTGAATCCCATCATCCTGCCACTGTGGCATGTTGGAAT  
GAATGATGTCCTCCCTAACAGCCCACCCTACTTCCCCGCTTTGGACAGAAAATCACCGTGTGATTGGG  
AAGCCCTCAGTACACTCCCTGTGCTTGAGCGGCTCCGGGCAGAGAACAAGTCAGCTGTGGAGATGCGGA  
AAGCCCTCACAGACTTCATTCAAGAGGAATCCAGCGGCTGAAGTGCAGGCAGAACAGCTCCACAATCA  
TTCCAGCCTGGAAGA

**ACGCGT**ACGCGGCCGCTCGAGCAGAAACTCATCTCAGAAGAGGATCTGGCAGCAAATGATATCCTGGATT  
ACAAGGATGACGACGATAAGGTTTAA



[View online »](#)

**Protein Sequence:** >MR203448 protein sequence  
 Red=Cloning site Green=Tags(s)

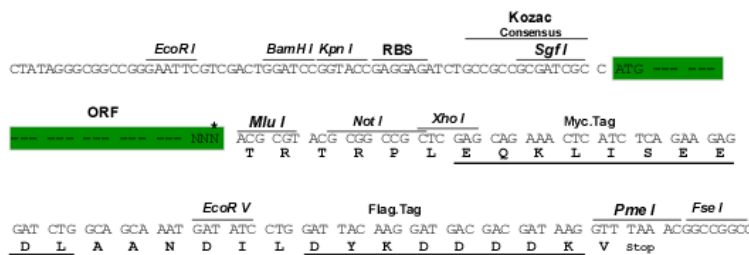
MPLHVKWPFPAVPRLTWTLASSVVMGLVGTYS CFWTKYMNHLTVHNKEVLYELIENRGPATPLITVSNHQ  
 SCMDPHLWGILKLRHIWNLKLRWTPAAADICFTKELHSHFFSLGKCVPCRGDGVYQKGMDFILEKLN  
 HGDWVHIFPEGKVNMSSEFLRFKWIIGRLIAECHLNPIILPLWHVGMNDVLPNSPPYFPRFGQKITVLIIG  
 KPFSTLPVLERLRAENKSAVEMRKAL TDFIQEEFQRLKMQAEQLHNHFQGR

TRTRPLEQKLISEEDLAANDILDYKDDDDKV

**Restriction Sites:** SgfI-MluI

**Cloning Scheme:**

Cloning sites used for ORF Shuttling:



\* The last codon before the Stop codon of the ORF

**ACCN:** NM\_181516

**ORF Size:** 789 bp

**OTI Disclaimer:** The molecular sequence of this clone aligns with the gene accession number as a point of reference only. However, individual transcript sequences of the same gene can differ through naturally occurring variations (e.g. polymorphisms), each with its own valid existence. This clone is substantially in agreement with the reference, but a complete review of all prevailing variants is recommended prior to use. [More info](#)

**OTI Annotation:** This clone was engineered to express the complete ORF with an expression tag. Expression varies depending on the nature of the gene.

**Components:** The ORF clone is ion-exchange column purified and shipped in a 2D barcoded Matrix tube containing 10ug of transfection-ready, dried plasmid DNA (reconstitute with 100 ul of water).

**Reconstitution Method:**

1. Centrifuge at 5,000xg for 5min.
2. Carefully open the tube and add 100ul of sterile water to dissolve the DNA.
3. Close the tube and incubate for 10 minutes at room temperature.
4. Briefly vortex the tube and then do a quick spin (less than 5000xg) to concentrate the liquid at the bottom.
5. Store the suspended plasmid at -20°C. The DNA is stable for at least one year from date of shipping when stored at -20°C.

**RefSeq:** [NM\\_181516.6](#)

**RefSeq Size:** 1830 bp

**RefSeq ORF:** 789 bp

**Locus ID:** 66826

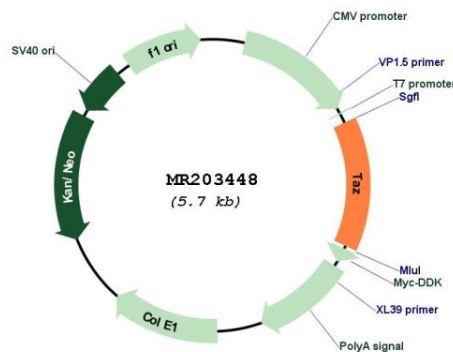
**UniProt ID:** [Q91WF0](#)

**Cytogenetics:** X 37.95 cM

**MW:** 30.3 kDa

**Gene Summary:** This gene encodes a mitochondrial phospholipid-lysophospholipid transacylase necessary for normal composition and content of cardiolipin. In humans, mutations of this gene result in Barth syndrome, most often characterized by cardioskeletal myopathy, neutropenia and abnormal mitochondria. This gene is distinct from the gene encoding transcriptional coactivator with PDZ binding motif. Both genes share the gene symbol Taz. Multiple transcript variants encoding different isoforms have been described. [provided by RefSeq, Mar 2010]

### Product images:



Circular map for MR203448