

## Product datasheet for MR203434

### Aqp8 (NM\_001109045) Mouse Tagged ORF Clone

#### Product data:

Product Type:	Expression Plasmids
Product Name:	Aqp8 (NM_001109045) Mouse Tagged ORF Clone
Tag:	Myc-DDK
Symbol:	Aqp8
Synonyms:	A1255744; AQP-8
Mammalian Cell Selection:	Neomycin
Vector:	pCMV6-Entry (PS100001)
E. coli Selection:	Kanamycin (25 ug/mL)
ORF Nucleotide Sequence:	>MR203434 ORF sequence Red=Cloning site Blue=ORF Green=Tags(s)

TTTTGTAATACGACTCACTATAGGGCGGCCGGAATTCGTCGACTGGATCCGGTACCGAGGAGATCTGCC  
GCC**CGATCGCC**

ATGTCTGGGGAGACCAATGTGTAGTATGGACCTACCTGAGGTCAAGGTGAAGACCAGCATGGCTGGCA  
GATGCCGTGTGTTCTGGTATGAGCAATACGTACAACCATGTATAGTGAACTTGTGGCTCCGCTCTCTT  
CATCTTCATCGGATGTCTATCGGTCATTGAGAATAGTCCGAATACTGGGCTCCTGCAGCCTGCCTTGCT  
CATGGGCTGGCCTTGGGGCTCATCATTGCTACCTTGGGAACATCAGCGGTGGACACTTCAACCCTGCTG  
TGTCGCTGGCAGTCACAGTGATCGGAGGCCTCAAGACCATGCTGCTAATCCCTATTGGATCTCCAGCT  
ATTTGGAGGGCTGATTGGGGCTGCCTTGCTAAAGTGGTGAAGTCCAGAGGAAAGATTCTGGAATGCATCT  
GGGGCAGCCTTTGCCATCGTCCAGGAGCAGGAGCAGGTGGCAGAAGCCCTGGGGATAGAGATCATTCTGA  
CAATGCTGTTGGTATTGGCTGTGTGATGGGTGCTGTCAATGAGAAGACAATGGGCCCTTTAGCCCCATT  
CTCCATTGGCTTCTGTGCTATTGTGGACATCCTGGCAGGTGGTAGCATCTCTGGAGCCTGCATGAACCTT  
GCTCGTGCCTTTGGACCTGCTGTGATGGCTGGCTACTGGGACTTCCATTGGATCTACTGGCTGGGCCCC  
TCCTGGCTGGCCTCTTTGTAGGACTGCTCATTAGGCTCCTCATCGGAGATGAGAAAACCCGCTAATTCT  
AAAGTCGAGG

**ACGCGT**ACGCGGCCGCTCGAGCAGAACTCATCTCAGAAGAGGATCTGGCAGCAAATGATATCCTGGATT  
ACAAGGATGACGACGATAAGGTTTAA



[View online »](#)

**Protein Sequence:** >MR203434 protein sequence  
Red=Cloning site Green=Tags(s)

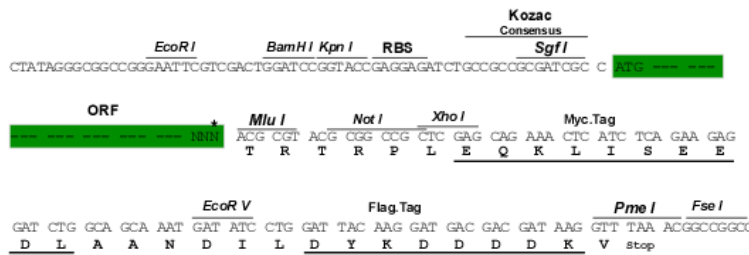
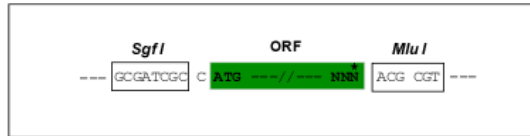
MSGETPMCSDLPEVKVKTSMAGRCRVFWEQYVQPCIVELVGSALFIFIGLSVIENSPNTGLLQPALA  
HGLALGLIATLGNISGGHFNPAVSLAVTVIGGLKTMLLIPYWISQLFGGLIGAALAKVVSPEERFWNAS  
GAAFAIVQEQQVAEALGIEIILTMLLVLAVCMGAVNEKTMGPLAPFSIGF SVIVDILAGGSISGACMNP  
ARAFGPVMAGYWDFHWIYWLGPLLAGL FVGLLIRLLIGDEKTRLILKSR

TRTRPLEQKLISEEDLAANDILDYKDDDDKV

**Restriction Sites:** SgfI-MluI

**Cloning Scheme:**

Cloning sites used for ORF Shuttling:



\* The last codon before the Stop codon of the ORF

**ACCN:** NM\_001109045

**ORF Size:** 783 bp

**OTI Disclaimer:** The molecular sequence of this clone aligns with the gene accession number as a point of reference only. However, individual transcript sequences of the same gene can differ through naturally occurring variations (e.g. polymorphisms), each with its own valid existence. This clone is substantially in agreement with the reference, but a complete review of all prevailing variants is recommended prior to use. [More info](#)

**OTI Annotation:** This clone was engineered to express the complete ORF with an expression tag. Expression varies depending on the nature of the gene.

**Components:** The ORF clone is ion-exchange column purified and shipped in a 2D barcoded Matrix tube containing 10ug of transfection-ready, dried plasmid DNA (reconstitute with 100 ul of water).

**Reconstitution Method:**

1. Centrifuge at 5,000xg for 5min.
2. Carefully open the tube and add 100ul of sterile water to dissolve the DNA.
3. Close the tube and incubate for 10 minutes at room temperature.
4. Briefly vortex the tube and then do a quick spin (less than 5000xg) to concentrate the liquid at the bottom.
5. Store the suspended plasmid at -20°C. The DNA is stable for at least one year from date of shipping when stored at -20°C.

**RefSeq:** [NM\\_001109045.1](#), [NP\\_001102515.1](#)

**RefSeq Size:** 1483 bp

**RefSeq ORF:** 783 bp

**Locus ID:** 11833

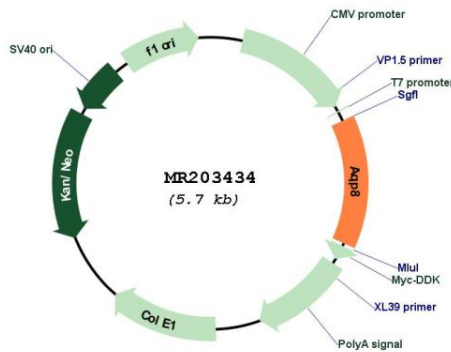
**UniProt ID:** [P56404](#)

**Cytogenetics:** 7 F3

**MW:** 27.7 kDa

**Gene Summary:** Forms a water-specific channel; mercury-sensitive. Also permeable to urea but not to glycerol.[UniProtKB/Swiss-Prot Function]

**Product images:**



Circular map for MR203434