

Product datasheet for MR203426

Rchy1 (NM_026557) Mouse Tagged ORF Clone

Product data:

Product Type:	Expression Plasmids
Product Name:	Rchy1 (NM_026557) Mouse Tagged ORF Clone
Tag:	Myc-DDK
Symbol:	Rchy1
Synonyms:	ARNIP; CHIMP; Pi; Pirh2; PRO1; Zfp36; Zfp363; Znf363
Mammalian Cell Selection:	Neomycin
Vector:	pCMV6-Entry (PS100001)
E. coli Selection:	Kanamycin (25 ug/mL)
ORF Nucleotide Sequence:	>MR203426 ORF sequence Red=Cloning site Blue=ORF Green=Tags(s)

TTTTGTAATACGACTCACTATAGGGCGGCCGGAATTCGTCGACTGGATCCGGTACCGAGGAGATCTGCC
GCC**CGATCGCC**

ATGGCGGCACGGCGCGGAAGATGGCGTCCGCAACCTGGCGCAGGGGCCGCGGGCTGCGAGCACTATG
ACAGAGCTTGTCTCCTCAAGGCACCTTGTGTGACAAGCTTTATACCTGCCGGCTGTGTCACGATACCAA
TGAAGATCATCAGCTAGATCGTTTCAAAGTCAAGGAAGTGCAGTGCATCAACTGTAAAACTCCAACAT
GCCCAGCAGACTTGTGAAGACTGTAGCACATTGTTGGAGAATATACTGCAGTATTTGCCACCTGTTTG
ACAAAGATAAGAGGCAGTACCACTGTGAGAGCTGTGGATTTGTAGGATTGGTCCAAAGGAAGATTTTTT
CCATTGCTTGAATGTAATTCATGCCTAACACGAATCTTCGAGGAAAACACAAGTGTATTGAAAATGTT
TCCCGGCAGAATTGTCCAATATGCTTGGAGGACATTCACACCTCCCGTGTGTTGCTCACGTCTTGCCGT
GTGGGCATCTCCTACATAGAACGTGTTATGAAGAAATGTTGAAAGAAGGTTACAGATGCCATTGTGCAT
GCATTCTGCCTTAGACATGACTCGGTAAGGAGACAGCTAGATACTGAGGTAGCACAGACTCCCATGCCA
TCGGAATACCAGAATGTGACTGTTGACATTCTCTGCAATGACTGTAATGGACGATCCACAGTCCAGTTCC
ATATCTTAGGCATGAAATGTAAGCTTTGTGACTCCTACAATACTGCCAAGCTGGAGGCCGTAGAGTGCC
AGTGGATCAGCAG

ACGCGTACGCGGCCGCTCGAGCAGAACTCATCTCAGAAGAGGATCTGGCAGCAAATGATATCCTGGATT
ACAAGGATGACGACGATAAGGTTTAA



[View online »](#)

Protein Sequence: >MR203426 protein sequence
Red=Cloning site Green=Tags(s)

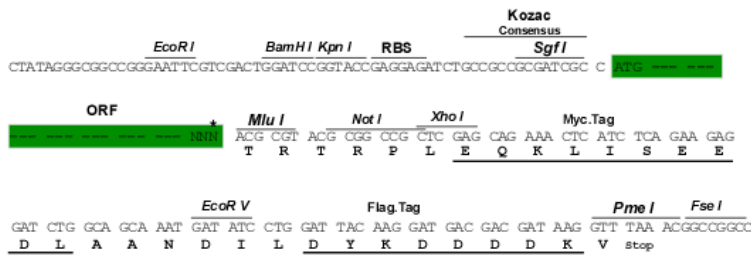
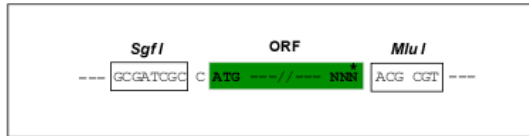
MAATAREDGVRNLAQGPRGCEHYDRACLLKAPCCDKLYTCRLCHDTNEDHQLDRFKVKEVQCINCEKLQH
 AQTTCEDCSTLFGEYYCSICHLFDKDKRQYHCESCGICRIGPKEDFFHCLKCNSCLTTNLRGKHKCIENV
 SRQNCPICLEDIHTSRVVAHVLPCGHLLHRTCYEEMLEKGYRCP LCMHSALDMTRYWRQLDTEVAQTPMP
 SEYQNVTVDILCNCDCNGRSTVQFHILGMKCKLDCSYNTAQAGGRRVPVDQQ

TRTRPLEQKLISEEDLAANDILDYKDDDDKV

Restriction Sites: Sgfl-MluI

Cloning Scheme:

Cloning sites used for ORF Shuttling:



ACCN: NM_026557

ORF Size: 786 bp

OTI Disclaimer: The molecular sequence of this clone aligns with the gene accession number as a point of reference only. However, individual transcript sequences of the same gene can differ through naturally occurring variations (e.g. polymorphisms), each with its own valid existence. This clone is substantially in agreement with the reference, but a complete review of all prevailing variants is recommended prior to use. [More info](#)

OTI Annotation: This clone was engineered to express the complete ORF with an expression tag. Expression varies depending on the nature of the gene.

Components: The ORF clone is ion-exchange column purified and shipped in a 2D barcoded Matrix tube containing 10ug of transfection-ready, dried plasmid DNA (reconstitute with 100 ul of water).

Reconstitution Method:

1. Centrifuge at 5,000xg for 5min.
2. Carefully open the tube and add 100ul of sterile water to dissolve the DNA.
3. Close the tube and incubate for 10 minutes at room temperature.
4. Briefly vortex the tube and then do a quick spin (less than 5000xg) to concentrate the liquid at the bottom.
5. Store the suspended plasmid at -20°C. The DNA is stable for at least one year from date of shipping when stored at -20°C.

RefSeq: [NM_026557.1](#), [NM_026557.2](#), [NM_026557.3](#), [NM_026557.4](#), [NP_080833.1](#)

RefSeq Size: 2029 bp

RefSeq ORF: 786 bp

Locus ID: 68098

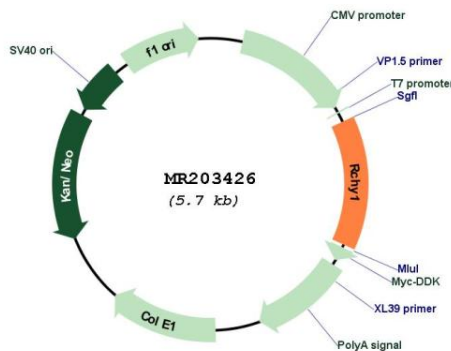
UniProt ID: [Q9CR50](#)

Cytogenetics: 5 E2

MW: 30 kDa

Gene Summary: This gene encodes a protein containing CHY-, CTCHY-, and RING-type zinc-fingers. The encoded protein functions as an E3 ubiquitin ligase, and mediates the degradation of target proteins such as p53. The activity of this protein is important in cell cycle regulation. Alternative splicing results in multiple transcript variants. [provided by RefSeq, Nov 2012]

Product images:



Circular map for MR203426