

Product datasheet for **MR203419**

Lptm5 (BC020993) Mouse Tagged ORF Clone

Product data:

Product Type:	Expression Plasmids
Product Name:	Lptm5 (BC020993) Mouse Tagged ORF Clone
Tag:	Myc-DDK
Symbol:	Lptm5
Synonyms:	E3
Mammalian Cell Selection:	Neomycin
Vector:	pCMV6-Entry (PS100001)
E. coli Selection:	Kanamycin (25 ug/mL)
ORF Nucleotide Sequence:	>MR203419 ORF sequence Red=Cloning site Blue=ORF Green=Tags(s)

TTTTGTAATACGACTCACTATAGGGCGGCCGGAATTCGTCGACTGGATCCGGTACCGAGGAGATCTGCC
GCC**CGATCGCC**

ATGGCCTCCCGTGCAGCGCCGGTCAGACAGACATGCTGTTGTTTCAACATCCGAGTCGCCACCATAGCCC
TGGCCATTTACCACATAGTCATGAGTGTCTGCTGTTTATTGAGCATGTGGTGGAGGTGGCCCGGGTAA
AGTGTCTGTAGGTTCTCAAGATGCCGTACCTCAGGATGGCTGACCTGCTCTCCAGTTCCTGCTCATT
GGCGTGTCTTTCATCATCAGCATCAGCCTGCTGTTGGCGTGGTCAAGAACCGGGAGAAGTACCTGATAC
CCTTCCTGTCCCTCAAATCATGGACTTCTGCTGCTGCTGCTCACACTGCTGGGCTCCTACATCGAATT
GCCAGCGTACTTGAAGCTTGCCCGGCCCGCCCTGGTCTCTAAGGTCCCTTGATGACTGCAGCTG
CTAGACTTCTGTTGAGTATCCTGACCCTGTGCAGCTCCTACATGGAAGTGCCCACTACCTCAACTTCA
AGTCCATGAACCACATGAATTACCTCCCAAGCCAGGAGGTGTGCCGCACAGCCAGTTTCAACATGAT
GCTCATCTTCTCAGTGGCCTTTATACCGTGTCTCATCCTGAAGGTCTACATGTTCAAGTGTGTGACACA
TGCTACAAATTCTTGAAGCACATGAATTCGGCCATGGAGGACAGCAGCTCCAAGATGTTCTCAAGGTGG
CTCTGCCGTCTACGAGGAAGCCTGTCTCTGCCCCCTAAGACTCCAGAGGGGGACCCTGCACCACCCCC
ATACTCAGAAGTG

ACGCGTACGCGGCCGCTCGAGCAGAAACTCATCTCAGAAGAGGATCTGGCAGCAAATGATATCCTGGATT
ACAAGGATGACGACGATAAGGTTTAA



[View online »](#)

Protein Sequence: >MR203419 protein sequence
 Red=Cloning site Green=Tags(s)

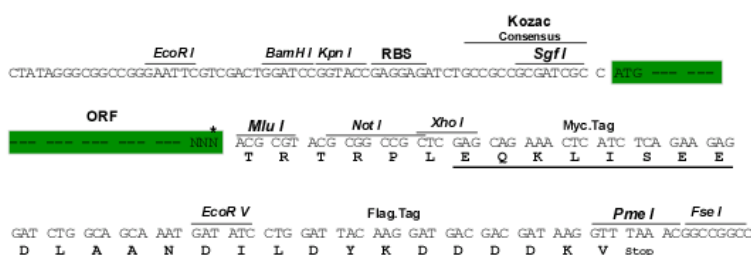
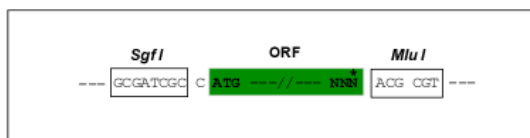
MASRAAPVRQTCCCFNIRVATIALAIYHIVMSVLLFIEHVVEVARGKVSCRFFKMPYLRMADLLSSFLLI
 GVLFIISISLLFGVVKNREKYLIPFLSLQIMDFLLCLLTLLGSYIELPAYLKLARPPGPSKVPLMTLQL
 LDFCLSILTLCSSYMEVPTYLNFKSMNHMNYLPSQEGVPHSQFINMMLIFSVAFITVLILKVYMFKCVYT
 CYKFLKHMNSAMEDSSSKMFLKVALPSYEEALSLPPKTPEGDPAPPPYSEV

TRTRPLEQKLISEEDLAANDILDYKDDDDKV

Restriction Sites: Sgfl-MluI

Cloning Scheme:

Cloning sites used for ORF Shuttling:



* The last codon before the Stop codon of the ORF

ACCN: BC020993

ORF Size: 783 bp

OTI Disclaimer: The molecular sequence of this clone aligns with the gene accession number as a point of reference only. However, individual transcript sequences of the same gene can differ through naturally occurring variations (e.g. polymorphisms), each with its own valid existence. This clone is substantially in agreement with the reference, but a complete review of all prevailing variants is recommended prior to use. [More info](#)

OTI Annotation: This clone was engineered to express the complete ORF with an expression tag. Expression varies depending on the nature of the gene.

Components: The ORF clone is ion-exchange column purified and shipped in a 2D barcoded Matrix tube containing 10ug of transfection-ready, dried plasmid DNA (reconstitute with 100 ul of water).

Reconstitution Method:

1. Centrifuge at 5,000xg for 5min.
2. Carefully open the tube and add 100ul of sterile water to dissolve the DNA.
3. Close the tube and incubate for 10 minutes at room temperature.
4. Briefly vortex the tube and then do a quick spin (less than 5000xg) to concentrate the liquid at the bottom.
5. Store the suspended plasmid at -20°C. The DNA is stable for at least one year from date of shipping when stored at -20°C.

RefSeq: [BC020993](#), [AAH20993](#)

RefSeq Size: 2551 bp

RefSeq ORF: 785 bp

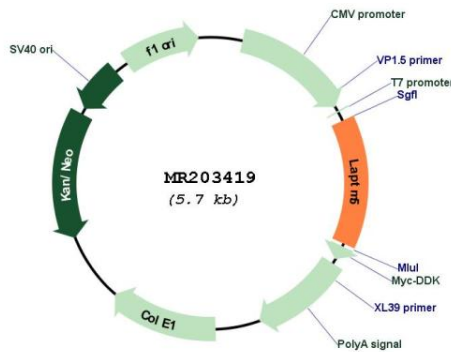
Locus ID: 16792

Cytogenetics: 4 D2.2

MW: 29.6 kDa

Gene Summary: May have a special functional role during embryogenesis and in adult hematopoietic cells. [UniProtKB/Swiss-Prot Function]

Product images:



Circular map for MR203419