

Product datasheet for MR203417

Gjb6 (NM_008128) Mouse Tagged ORF Clone

Product data:

Product Type:	Expression Plasmids
Product Name:	Gjb6 (NM_008128) Mouse Tagged ORF Clone
Tag:	Myc-DDK
Symbol:	Gjb6
Synonyms:	AA958971; Cx30; D14Bwg0506e
Mammalian Cell Selection:	Neomycin
Vector:	pCMV6-Entry (PS100001)
E. coli Selection:	Kanamycin (25 ug/mL)
ORF Nucleotide Sequence:	>MR203417 ORF sequence Red=Cloning site Blue=ORF Green=Tags(s)

TTTTGTAATACGACTCACTATAGGGCGGCCGGAATTCGTCGACTGGATCCGGTACCGAGGAGATCTGCC
GCC**CGATCGCC**

ATGGACTGGGGACCCTGCACCCGTCATCGGTGGCGTGAACAAGCACTCTACCAGCATAGGGAAGGTGT
GGATCACGGTCATCTTTATTTCCGAGTCATGATCCTAGTGGTGGCTGCCAGGAAGTGTGGGTGATGA
GCAGGAGGACTTTGTCTGCAACTCTGCAGCCAGGGTGAAGAAGCTGCTATGACCATTTCTCCCG
GTGTCTCACATCCGGCTCTGGCCCTGCAGCTGATCTTTGTGTCTACCCAGCCCTGTTGGTGGCCATGC
ACGTGGCCTACTACAGACATGAAACTGCCCGAAAGTTTATACGTGGGAGAAGAGAAACGAGTTTAAAGA
CCTGGAGGACATCAAACGGCAGAAGGTGCGCATTGAGGGCTCCCTGTGGTGGACGTACACCAGCAGCATT
TTCTTCCGCATCATCTTGAAGCCGCTTCATGTATGTGTTCTACTTCTCTACAATGGGTACCACCTAC
CCTGGGTAAGTAAATGTGGCATTGACCCCTGCCCAATCTCGTGGACTGCTTCAATTCGAGGCCAACTGA
GAAAACGGTGTCACTGTTTTATGATTTCCGCATCCGTGATTTGCATGCTCAATGTGGCCGAGTTG
TGTTACCTGCTGCTTAAATTGTGCTTTAGGAGATCCAAAAGAACAGGGCAGAGAAACCCCAACC
ATGCCCTGAAAGAGAGCAAGCAGAATGAAATGAATGAGCTGATCTCAGATAGTGGCCAGAATGCAATCAC
AAGTTTCCAAGT

ACGCGTACGCGGCCGCTCGAGCAGAAACTCATCTCAGAAGAGGATCTGGCAGCAAATGATATCCTGGATT
ACAAGGATGACGACGATAAGGTTTAA



[View online »](#)

Protein Sequence: >MR203417 protein sequence
Red=Cloning site Green=Tags(s)

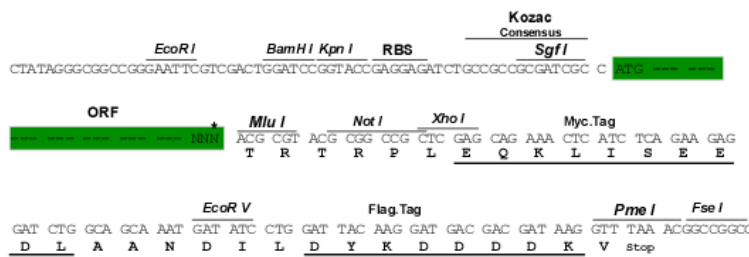
MDWGLTHTVIGGVNKHSTSIGKVWITVIFIFRVMILVVAEQEVWGDEQEDFVNCNTLQPGCKNVCYDHFFP
 VSHIRLWALQLIFVSTPALLVAMHVAYYRHETARKFIRGEKRNEFKDLEDIKRQKVRIEGLWWTSSI
 FFRIIFEAAFMYVFYFLYNGYHLPWVLKCGIDPCPNLVDFCISRPTEKTVFTVFMISASVICMLLNVAEL
 CYLLKLCFRRSKRTQAQRNHPNHALKESKQNMNELISDSGQNAITSFPS

TRTRPLEQKLISEEDLAANDILDYKDDDDKV

Restriction Sites: SgfI-MluI

Cloning Scheme:

Cloning sites used for ORF Shuttling:



* The last codon before the Stop codon of the ORF

ACCN: NM_008128

ORF Size: 786 bp

OTI Disclaimer: The molecular sequence of this clone aligns with the gene accession number as a point of reference only. However, individual transcript sequences of the same gene can differ through naturally occurring variations (e.g. polymorphisms), each with its own valid existence. This clone is substantially in agreement with the reference, but a complete review of all prevailing variants is recommended prior to use. [More info](#)

OTI Annotation: This clone was engineered to express the complete ORF with an expression tag. Expression varies depending on the nature of the gene.

Components: The ORF clone is ion-exchange column purified and shipped in a 2D barcoded Matrix tube containing 10ug of transfection-ready, dried plasmid DNA (reconstitute with 100 ul of water).

Reconstitution Method:

1. Centrifuge at 5,000xg for 5min.
2. Carefully open the tube and add 100ul of sterile water to dissolve the DNA.
3. Close the tube and incubate for 10 minutes at room temperature.
4. Briefly vortex the tube and then do a quick spin (less than 5000xg) to concentrate the liquid at the bottom.
5. Store the suspended plasmid at -20°C. The DNA is stable for at least one year from date of shipping when stored at -20°C.

RefSeq: [NM_008128.3](#), [NP_032154.1](#)

RefSeq Size: 1962 bp

RefSeq ORF: 786 bp

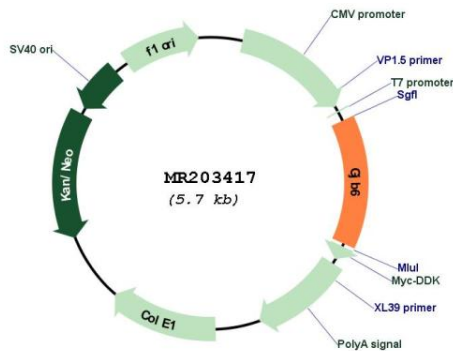
Locus ID: 14623

Cytogenetics: 14 30.1 cM

MW: 30.4 kDa

Gene Summary: One gap junction consists of a cluster of closely packed pairs of transmembrane channels, the connexons, through which materials of low MW diffuse from one cell to a neighboring cell.[UniProtKB/Swiss-Prot Function]

Product images:



Circular map for MR203417