

Product datasheet for **MR203410**

Klk1b8 (NM_008457) Mouse Tagged ORF Clone

Product data:

Product Type:	Expression Plasmids
Product Name:	Klk1b8 (NM_008457) Mouse Tagged ORF Clone
Tag:	Myc-DDK
Symbol:	Klk1b8
Synonyms:	kallikrein; Klk; Klk8; mGK-8; Nrpn; TADG1; TADG14
Mammalian Cell Selection:	Neomycin
Vector:	pCMV6-Entry (PS100001)
E. coli Selection:	Kanamycin (25 ug/mL)
ORF Nucleotide Sequence:	>MR203410 ORF sequence Red=Cloning site Blue=ORF Green=Tags(s)

TTTTGTAATACGACTCACTATAGGGCGGCCGGAATTCGTCGACTGGATCCGGTACCGAGGAGATCTGCC
GCC**CGATCGCC**

ATGAGGTTCTGATCCTGTTCTAGCCCTGTCCCTAGGAGGGATTGATGCTGCACCTCTCTCCAGTCTC
GGGTGGTTGGAGGATTTAACTGTGAGAAGAATCCCAACCCTGGCAGGTGGCTGTGTATGACAACAAGGA
ACACATTTGTGGGGAGTCCTGTTGGAACGCAACTGGGTCCCACAGCTGCCACTGCTATGTCGACCAG
TATGAGGTTTGGCTGGGCAAAAACAAGTTATTCCAAGAGGAACCCTCTGCTCAACACCGATTGGTCAGCA
AAAGCTTCCCTCACCCCTGGCTTCAACATGAGCCTCCTGACTCAAAGAGATACCTCCTGGGGCTGACTT
CAGCAATGACCTGATGCTGCTCCGCCTCAGCAAGCCTGCTGACATCACAGATGCTGTGAAGCCCATCACC
CTGCCACGAAGGAGTCAAACTGGGGAGCACATGCCTAGCCTCAGGCTGGGGCAGCATTACACCCACGA
AATGGCAAAAGCCAGATGATCTCCAGTGTGTGTTCCCTCAAGCTCCTGCCTATTAAGAACTGTATAGAAAA
CCACAATGTGAAGGTGACAGATGTATGCTGTGTGCAGGAGAGATGAGTGGAGGCAAAAACATTTGCAAG
GGTACTCCGGAGGCCATTGATCTGTGATAGTGTCTCCAAGGTATCACATCAACAGGCCCTATACCAT
GCGGTAACCTGGTGTACCAGCCATGTACACCAACCTTATTAAGTTCAACTCCTGGATAAAAAGATACTAT
GACGAAAAATTCC

ACGCGTACGCGGCCGCTCGAGCAGAAACTCATCTCAGAAGAGGATCTGGCAGCAAATGATATCCTGGATT
ACAAGGATGACGACGATAAGGTTTAA



[View online »](#)

Protein Sequence: >MR203410 protein sequence
 Red=Cloning site Green=Tags(s)

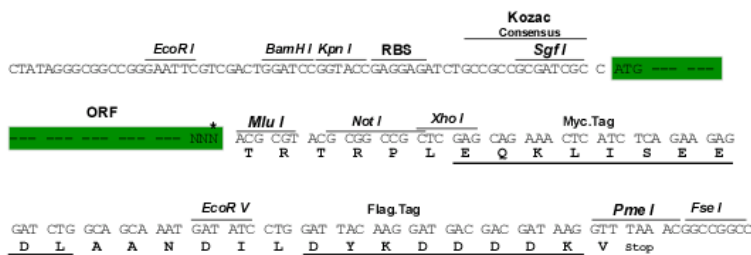
MRFLILFLALSLGGIDAAPPLQSRVVGGFNCEKNSQPWQVAVYDNKEHICGGVLLERNWVPTAAHCYVDQ
 YEVWLGKNKLFQEESAQHRLVSKSFPHPGFNMSLLTLKEIPPGADFNDLMLLRLSKPADITDAVKPIT
 LPTKESKLGSTCLASGWSITPTKWQKPDQLQCVFLKLLPIKNCIENHNKVTDVMLCAGEMSGGKNICK
 GDSGGPLICDSVLQGITSTGPIPCGKPGVPAMYTNLIKFNWSIKDTMTKNS

TRTRPLEQKLISEEDLAANDILDYKDDDDKV

Restriction Sites: SgfI-MluI

Cloning Scheme:

Cloning sites used for ORF Shuttling:



* The last codon before the Stop codon of the ORF

ACCN: NM_008457

ORF Size: 786 bp

OTI Disclaimer: The molecular sequence of this clone aligns with the gene accession number as a point of reference only. However, individual transcript sequences of the same gene can differ through naturally occurring variations (e.g. polymorphisms), each with its own valid existence. This clone is substantially in agreement with the reference, but a complete review of all prevailing variants is recommended prior to use. [More info](#)

OTI Annotation: This clone was engineered to express the complete ORF with an expression tag. Expression varies depending on the nature of the gene.

Components: The ORF clone is ion-exchange column purified and shipped in a 2D barcoded Matrix tube containing 10ug of transfection-ready, dried plasmid DNA (reconstitute with 100 ul of water).

Reconstitution Method:

1. Centrifuge at 5,000xg for 5min.
2. Carefully open the tube and add 100ul of sterile water to dissolve the DNA.
3. Close the tube and incubate for 10 minutes at room temperature.
4. Briefly vortex the tube and then do a quick spin (less than 5000xg) to concentrate the liquid at the bottom.
5. Store the suspended plasmid at -20°C. The DNA is stable for at least one year from date of shipping when stored at -20°C.

RefSeq: [NM_008457.1](#), [NM_008457.2](#), [NM_008457.3](#), [NP_032483.1](#)

RefSeq Size: 848 bp

RefSeq ORF: 786 bp

Locus ID: 16624

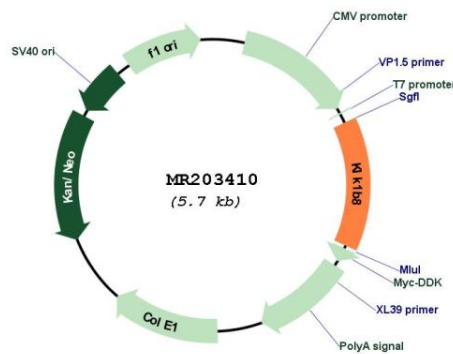
UniProt ID: [P07628](#)

Cytogenetics: 7 28.43 cM

MW: 28.5 kDa

Gene Summary: This gene encodes a member of the kallikrein subfamily of serine proteases that are involved in diverse physiological functions such as skin desquamation, tooth enamel formation, seminal liquefaction, synaptic neural plasticity and brain function. The encoded preproprotein undergoes proteolytic cleavage of the activation peptide to generate the functional enzyme. This gene is located in a cluster of several related kallikrein genes on chromosome 7. [provided by RefSeq, Feb 2016]

Product images:



Circular map for MR203410