

## Product datasheet for **MR203402**

### Wbp2 (NM\_016852) Mouse Tagged ORF Clone

#### Product data:

Product Type: Expression Plasmids  
Product Name: Wbp2 (NM\_016852) Mouse Tagged ORF Clone  
Tag: Myc-DDK  
Symbol: Wbp2  
Mammalian Cell Selection: Neomycin  
Vector: pCMV6-Entry (PS100001)  
E. coli Selection: Kanamycin (25 ug/mL)  
ORF Nucleotide Sequence: >MR203402 representing NM\_016852  
Red=Cloning site Blue=ORF Green=Tags(s)

TTTTGTAATACGACTCACTATAGGGCGGCCGGAATTCGTCGACTGGATCCGGTACCGAGGAGATCTGCC  
GCC**CGATCGCC**

ATGGCGCTCAACAAGAATCACTCAGAGGGCGGGGAGTGATCGTCAACAACACTGAGAGCATCCTAATGT  
CCTATGATCATGTGGAGCTTACCTTCAACGACATGAAGAATGTGCCAGAGGCCTTCAAAGGGACCAAGAA  
AGGCACCGTCTACCTTACTCCGTACCGGGTCATCTTTCTGTCTAAGGGGAAGGACGCCATGCAGTCCTTC  
ATGATGCCCTTTTACCTGATGAAGGACTGTGAGATTAAGCAGCCGGTGTGGTGGCAACTTCATTAAGG  
GAATAGTGAAGGCTGAAGCAGGAGGTGGCTGGGAAGGCTCCGCCCTCTACAAGCTGACCTCACAGCAGG  
GGCGCCATTGAGTTTGGGCAGAGGATGCTCCAGGTGGCATCTCAAGCCTCCAGAGGTGAAGTCCCAAT  
GGAGCCTATGGGTACCCTTACATGCCACGCGGGCCTATGTCTTTCCCCGCCAGTCGCCAATGGAATGT  
ACCCCTGCCCTCCTGGCTACCCCTATCCACCACCCCAACCGAGTTCTATCCAGGACCTCCCATGATGGA  
TGGGGCCATGGGCTATGTACAGCCCCACCACCCTATCCTGGGCCCATGGAGCCTCCGGTCAGCGGC  
CCCAGTCCCCCGCTACTCCTGCAGCCGAGGCCAAGGCTGCAGAAGCCGCTGCCAGTGCCTATTACAACC  
CAGGCAACCCACACAATGTCTACATGCCACGAGCCAGCTCCACCACCCTACTACCCCCAGAAGA  
CAAGAAGACCCAG

**ACGCGT**ACGCGGCCGCTCGAGCAGAAACTCATCTCAGAAGAGGATCTGGCAGCAAATGATATCCTGGATT  
ACAAGGATGACGACGATAAGGTTTAA

Chromatograms: [https://cdn.origene.com/chromatograms/mm9076\\_d10.zip](https://cdn.origene.com/chromatograms/mm9076_d10.zip)  
Restriction Sites: Sgfl-Mlul



**Cloning Scheme:**


**ACCN:** NM\_016852

**ORF Size:** 783 bp

**OTI Disclaimer:** The molecular sequence of this clone aligns with the gene accession number as a point of reference only. However, individual transcript sequences of the same gene can differ through naturally occurring variations (e.g. polymorphisms), each with its own valid existence. This clone is substantially in agreement with the reference, but a complete review of all prevailing variants is recommended prior to use. [More info](#)

**OTI Annotation:** This clone was engineered to express the complete ORF with an expression tag. Expression varies depending on the nature of the gene.

**Components:** The ORF clone is ion-exchange column purified and shipped in a 2D barcoded Matrix tube containing 10ug of transfection-ready, dried plasmid DNA (reconstitute with 100 ul of water).

**Reconstitution Method:**

1. Centrifuge at 5,000xg for 5min.
2. Carefully open the tube and add 100ul of sterile water to dissolve the DNA.
3. Close the tube and incubate for 10 minutes at room temperature.
4. Briefly vortex the tube and then do a quick spin (less than 5000xg) to concentrate the liquid at the bottom.
5. Store the suspended plasmid at -20°C. The DNA is stable for at least one year from date of shipping when stored at -20°C.

**RefSeq:** [NM\\_016852.3](#)

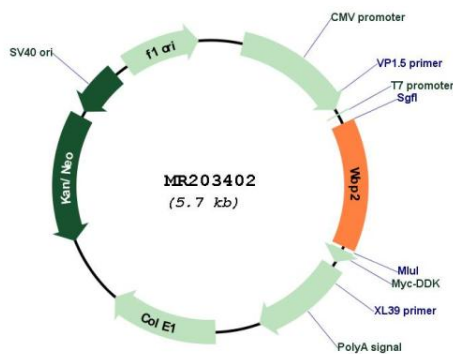
**RefSeq Size:** 1795 bp

**RefSeq ORF:** 786 bp

**Locus ID:** 22378  
**UniProt ID:** [P97765](#)  
**Cytogenetics:** 11 E2  
**MW:** 28.5 kDa

**Gene Summary:** Acts as transcriptional coactivator of estrogen and progesterone receptors (ESR1 and PGR) upon hormone activation. In presence of estrogen, binds to ESR1-responsive promoters. Required for YAP1 coactivation function on PGR activity. Synergizes with WBP2 in enhancing PGR activity (By similarity). Modulates expression of post-synaptic scaffolding proteins via regulation of ESR1, ESR2 and PGR (PubMed:26881968).[UniProtKB/Swiss-Prot Function]

**Product images:**



Circular map for MR203402