

Product datasheet for MR203362

Rab34 (NM_001159482) Mouse Tagged ORF Clone

Product data:

Product Type: Expression Plasmids
Product Name: Rab34 (NM_001159482) Mouse Tagged ORF Clone
Tag: Myc-DDK
Symbol: Rab34
Synonyms: AI326479; Narr; Rah; Rah1
Mammalian Cell Selection: Neomycin
Vector: pCMV6-Entry (PS100001)
E. coli Selection: Kanamycin (25 ug/mL)
ORF Nucleotide Sequence: >MR203362 representing NM_001159482
Red=Cloning site Blue=ORF Green=Tags(s)

TTTTGTAATACGACTCACTATAGGGCGCCGGGAATTCGTCGACTGGATCCGGTACCGAGGAGATCTGCC
GCC**CGGATCGCC**

ATGAACATTCTGGCGCCCGTGCGGAGGGACCGCTCCTGGCGGAGCTGCCCCAGTGCCTGAAGAAAGAGG
CCGCTTTGCACGTGCGCAAAGACTTCCACCCCGCGTCACTTGCCTGCCAGGAGCACCAGGACAGGCAC
CGTGGGATTTAAGATATCCAAGGTCATCGTTGTGGGAGACCTATCTGTGGGAAGACCTGTCTCATAAT
AGGTTCTGCAAAGACACCTTCGATAAGAATTACAAGGCTACCATCGGAGTGGATTTGAGATGGAACGAT
TTGAAGTCTTGGGTGTCCCTTCAGTCTCCAACCTTGGGACACGGCTGGTCAGGAAAGGTTCAAGTGCAT
TGCTTCCACCTACTACCGTGGAGCTCAAGCCATCATCATTGTCTTCAACCTGAATGACGTGGCATCCCTG
GAACACACCAAGCAGTGGCTCACTGATGCCCTCAAGGAGAACGACCTTCCAACGTGCTCCTCTTCTTG
TGGTTCCAAGAAGGACCTGAGTACTCCTGCTCAGTATTCCCTAATGGAGAAGGATGCCCTCAAGGTGGC
CCAAGAGATTAAGGCCGAGTACTGGCGGTGTCCTCCCTCACTGGTGAGAATGTCCGGGAATTTCTTCTC
CGTGTGGCAGCACTAACCTTTGAGGCAATGTCTGGCGGAGCTGGAGAAATCCGGGGCTCGGCACATTG
CAGATGTTGTCATCAACAGCGATGACAAAAACCTGTACCTAACTGCCAGCAAGAAAAAGGCCACATG
TTGTCCC

ACGCGTACGCGGCCGCTCGAGCAGAAACTCATCTCAGAAGAGGATCTGGCAGCAAATGATATCCTGGATT
ACAAGGATGACGACGATAAGGTTTAA



[View online »](#)

Protein Sequence: >MR203362 representing NM_001159482
Red=Cloning site Green=Tags(s)

MNIIAPVRRDRVLAELPQCLKKEAALHVRKDFHPRVTCACQEHRGTGVGFKISKVIVVGDLSVGKTCLIN
 RFCKDTDFDKNYKATIGVDFEMERFEVLGVPFSLQLWDTAGQERFKCIASYRGAQAIIVFNLDVASL
 EHTKQWLTDAIKENDPSNVLLFLVGSKKDLSTPAQYSLMEKDALKVAQEIKAEYWAVSSLTGENVREFFF
 RVAALTFEANVLAELEKSGARHIADVVRINSDDKNLYLTASKKKATCCP

TRTRPLEQKLISEEDLAANDILDYKDDDDKV

Restriction Sites: SgfI-MluI

Cloning Scheme:

Cloning sites used for ORF Shuttling:



ACCN: NM_001159482

ORF Size: 777 bp

OTI Disclaimer: The molecular sequence of this clone aligns with the gene accession number as a point of reference only. However, individual transcript sequences of the same gene can differ through naturally occurring variations (e.g. polymorphisms), each with its own valid existence. This clone is substantially in agreement with the reference, but a complete review of all prevailing variants is recommended prior to use. [More info](#)

OTI Annotation: This clone was engineered to express the complete ORF with an expression tag. Expression varies depending on the nature of the gene.

Components: The ORF clone is ion-exchange column purified and shipped in a 2D barcoded Matrix tube containing 10ug of transfection-ready, dried plasmid DNA (reconstitute with 100 ul of water).

Reconstitution Method:

1. Centrifuge at 5,000xg for 5min.
2. Carefully open the tube and add 100ul of sterile water to dissolve the DNA.
3. Close the tube and incubate for 10 minutes at room temperature.
4. Briefly vortex the tube and then do a quick spin (less than 5000xg) to concentrate the liquid at the bottom.
5. Store the suspended plasmid at -20°C. The DNA is stable for at least one year from date of shipping when stored at -20°C.

RefSeq: [NM_001159482.1](#), [NP_001152954.1](#)

RefSeq Size: 1376 bp

RefSeq ORF: 780 bp

Locus ID: 19376

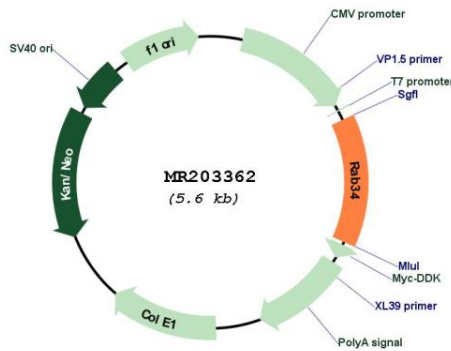
UniProt ID: [Q64008](#)

Cytogenetics: 11 46.74 cM

MW: 29.1 kDa

Gene Summary: Protein transport. Plays a role in the maturation of phagosomes that engulf pathogens, such as *S.aureus* and *Mycobacterium*. Plays a role in the fusion of phagosomes with lysosomes (By similarity). Involved in the redistribution of lysosomes to the peri-Golgi region (PubMed:12475955). Acts also as a positive regulator of hedgehog signaling and regulates ciliary function (PubMed:29290584).[UniProtKB/Swiss-Prot Function]

Product images:



Circular map for MR203362