

Product datasheet for MR203355

Dcun1d1 (BC020161) Mouse Tagged ORF Clone

Product data:

Product Type: Expression Plasmids
Product Name: Dcun1d1 (BC020161) Mouse Tagged ORF Clone
Tag: Myc-DDK
Symbol: Dcun1d1
Synonyms: Rp42, pTes3
Mammalian Cell Selection: Neomycin
Vector: pCMV6-Entry (PS100001)
E. coli Selection: Kanamycin (25 ug/mL)
ORF Nucleotide Sequence: >MR203355 representing BC020161
Red=Cloning site Blue=ORF Green=Tags(s)

TTTTGTAATACGACTCACTATAGGGCGGCCGGAATTCGTCGACTGGATCCGGTACCGAGGAGATCTGCC
GCC**CGATCGCC**

ATGAACAAGTTGAAATCATCGCAGAAGGATAAAGTTCGTCAGTTTATGATCTTCACACAATCTAGTGAGA
AAACTGCAGTAAGTTGTCTTTCTCAAAATGACTGGAAGTTAGATGTTGCAACAGATAATTTTTTTCAAAA
TCCAGAACTTTATACGGGAGAGTGTAAAAGGATCGTTGGACAGGAAGAAGTTAGAGCAACTGTACT
AGATACAAAGACCCTCAGGATGAAAATAAAATTGGAATAGATGGTATACAGCAGTTCTGTGATGATCTGG
CCCTCGATCCAGCCAGCATCAGTGTGTTGATCATTGCATGGAAGTTCAGGGCGGCCACACAGTGCAGTT
CTCCAAACAGGAGTTCATGGATGGCATGACAGAGTTAGGATGTGACAGCATAGAAAACTAAAGGCCAA
ATACCCAAGATGGAACAAGAATTGAAAGAACCAGGACGATTTAAGGATTTTTACCAGTTTACTTTTAATT
TTGCAAAGATCCAGGACAAAAAGGATTAGATCTAGAAATGGCCATTGCTTACTGGAACCTTAGTGCTTAA
TGGAAGATTTAAATCTTAGACTTATGGAATAAATTTTTGTTGGAGCATCATAAACGATCAATACAAAA
GACACGTGGAATCTTCTGTTAGACTTCAGTTCAATGATTGCAGATGACATGTCCAATTATGATGAAGAAG
GAGCATGGCCTGTCCTTATTGATGACTTTGTGGAATTTGCACGCCCTCAAATTGCTGGGACAAAAAGTAC
AACAGTG

ACGCGTACGCGGCCGCTCGAGCAGAACTCATCTCAGAAGAGGATCTGGCAGCAAATGATATCCTGGATT
ACAAGGATGACGACGATAAGGTTTAA



[View online »](#)

Protein Sequence: >MR203355 representing BC020161
Red=Cloning site Green=Tags(s)

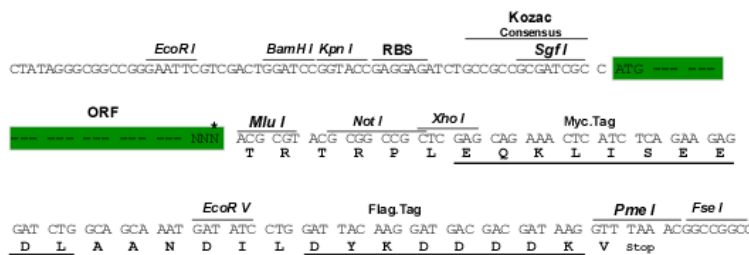
MNKLKSSQKDKVRQFMIFTQSSEKTAVSCLSQNDWKLDVATDNFFQNPELYIRESVKGSLDRKKLEQLYT
 RYKDPQDENKIGIDGIQQFCDDLALDPASISVLI IAWKFRAATQCEFSKQEFMDGMTELGCDSIEKLKAQ
 IPKMEQELKEPGRFKDFYQFTFNFAKNPGQKGLDLEMAIAYWNLVLNGRFKFLDLWNKFLLEHHKRSIPK
 DTWNLLLDFFSSMIADDMSNYDEEGAWPVLIDDFVEFARPQIAGTKSTTV

TRTRPLEQKLISEEDLAANDILDYKDDDDKV

Restriction Sites: Sgfl-MluI

Cloning Scheme:

Cloning sites used for ORF Shuttling:



* The last codon before the Stop codon of the ORF

ACCN: BC020161

ORF Size: 777 bp

OTI Disclaimer: The molecular sequence of this clone aligns with the gene accession number as a point of reference only. However, individual transcript sequences of the same gene can differ through naturally occurring variations (e.g. polymorphisms), each with its own valid existence. This clone is substantially in agreement with the reference, but a complete review of all prevailing variants is recommended prior to use. [More info](#)

OTI Annotation: This clone was engineered to express the complete ORF with an expression tag. Expression varies depending on the nature of the gene.

Components: The ORF clone is ion-exchange column purified and shipped in a 2D barcoded Matrix tube containing 10ug of transfection-ready, dried plasmid DNA (reconstitute with 100 ul of water).

Reconstitution Method:

1. Centrifuge at 5,000xg for 5min.
2. Carefully open the tube and add 100ul of sterile water to dissolve the DNA.
3. Close the tube and incubate for 10 minutes at room temperature.
4. Briefly vortex the tube and then do a quick spin (less than 5000xg) to concentrate the liquid at the bottom.
5. Store the suspended plasmid at -20°C. The DNA is stable for at least one year from date of shipping when stored at -20°C.

RefSeq: [BC020161.1](#)

RefSeq Size: 1505 bp

RefSeq ORF: 779 bp

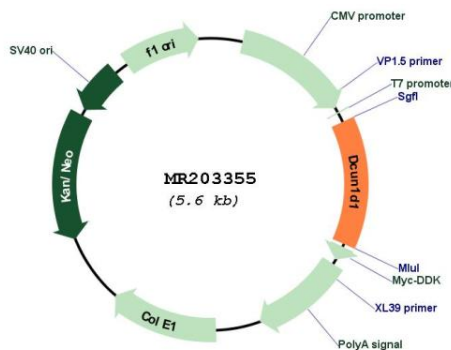
Locus ID: 114893

Cytogenetics: 3 B

MW: 55.1 kDa

Gene Summary: Part of an E3 ubiquitin ligase complex for neddylation. Promotes neddylation of cullin components of E3 cullin-RING ubiquitin ligase complexes. Acts by binding to cullin-RBX1 complexes in the cytoplasm and promoting their nuclear translocation, enhancing recruitment of E2-NEDD8 (UBE2M-NEDD8) thioester to the complex, and optimizing the orientation of proteins in the complex to allow efficient transfer of NEDD8 from the E2 to the cullin substrates. Involved in the release of inhibitory effects of CAND1 on cullin-RING ligase E3 complex assembly and activity (By similarity). Acts also as an oncogene facilitating malignant transformation and carcinogenic in vivo (PubMed:20563250).[UniProtKB/Swiss-Prot Function]

Product images:



Circular map for MR203355