

Product datasheet for MR203338

Rnpc3 (BC016603) Mouse Tagged ORF Clone

Product data:

Product Type:	Expression Plasmids
Product Name:	Rnpc3 (BC016603) Mouse Tagged ORF Clone
Tag:	Myc-DDK
Symbol:	Rnpc3
Synonyms:	2810441O16Rik; AI447568; C030014B17Rik
Mammalian Cell Selection:	Neomycin
Vector:	pCMV6-Entry (PS100001)
E. coli Selection:	Kanamycin (25 ug/mL)
ORF Nucleotide Sequence:	>MR203338 ORF sequence Red=Cloning site Blue=ORF Green=Tags(s)

TTTTGTAATACGACTCACTATAGGGCGGCCGGAATTCGTCGACTGGATCCGGTACCGAGGAGATCTGCC
GCCCGCATCGCC

ATGAACAGATTAATGGAAGTACGAAATCTTCAGCCAAAAGACCCAAAACAGAAAAGCCACGCCACGTGA
GAAAAAGCGAAAAATAAGGATATGTTGAATATACCTTCATCAGCTTCACATAGTTTGCATCCTGTGCT
GTTACCTTCGGATGTATTTGACCAGCCACAATCTGTAGGTAATAAAAAATTGAGTTCAATATATCAACC
AACATGCCTGCAGCATTTAACAAAGATTTGGAGACACAACAAAATAATGAAGAAGAAAATCTGATTAC
CAGACTGACTTGATTCAAATACAGGATTTGGCAAAATCTTCCCTAACCTAATTTGAACATCACAGA
AGAGATTACAGAAGACTCTGATGAAATACCTTCACAATTTATTTCTAGAAAAGAGTTGAAAAGGGTCGT
ATTTCTAGAGAAGAAATGGAAACTTTTCAGTTTTTAGAAGTTATGAACCTGGTGAACCAAACTGCAGAA
TTTATGTAAGAAATTTAGCTAGACATGTTTCAGGAAAAGGACCTTAAATTTATTTGGAAGATACGTTGA
CTTTTCTTCAGAAACACAGCGGATCATGTTTGATATTCGCTTAATGAAAGAAGGACGCATGAAAAGGCAA
GCTTTTGTGGACTTCCAATGAAAAGCAGCCGCTAAAGCGTTGAAAGAAGCTAATGGCTATGTTCTTT
TTGAAAACCCATGGTGGTTCAGTTTGCATGCTGCTAGACAAAACAGGATTTAAAGAAGGAAAACG
GAAG

ACGCGTACGCGGCCGCTCGAGCAGAAACTCATCTCAGAAGAGGATCTGGCAGCAAATGATATCCTGGATT
ACAAGGATGACGACGATAAGGTTTAA



[View online »](#)

Protein Sequence: >MR203338 protein sequence
 Red=Cloning site Green=Tags(s)

MNRLMELANLQPKRPKTEKPRHVRKKRRIKDMNLNIPSSASHSLHPVLLPSDVFDQPQSVGNKKIEFNIST
 NMPAAFNKDLETQPNNEEENS DSPDTGLDSNTGFGKIFPKPNLNITEEITEDSDEIPSQFISRKELEKGR
 ISREEMETLSVFRSYEPGEPNCRIVVKNLARHVQEKDLKFI FGRVYVDFSSSETQRIMFDIRLMKEGRMKGQ
 AFVGLPNEKAAAKALKEANGYVLF GKPMVVQFARSARPKQDSKEGKRK

TRTRPLEQKLISEEDLAANDILDYKDDDDKV

Restriction Sites: SgfI-MluI

Cloning Scheme:

Cloning sites used for ORF Shuttling:



* The last codon before the Stop codon of the ORF

ACCN: BC016603

ORF Size: 774 bp

OTI Disclaimer: The molecular sequence of this clone aligns with the gene accession number as a point of reference only. However, individual transcript sequences of the same gene can differ through naturally occurring variations (e.g. polymorphisms), each with its own valid existence. This clone is substantially in agreement with the reference, but a complete review of all prevailing variants is recommended prior to use. [More info](#)

OTI Annotation: This clone was engineered to express the complete ORF with an expression tag. Expression varies depending on the nature of the gene.

Components: The ORF clone is ion-exchange column purified and shipped in a 2D barcoded Matrix tube containing 10ug of transfection-ready, dried plasmid DNA (reconstitute with 100 ul of water).

Reconstitution Method:

1. Centrifuge at 5,000xg for 5min.
2. Carefully open the tube and add 100ul of sterile water to dissolve the DNA.
3. Close the tube and incubate for 10 minutes at room temperature.
4. Briefly vortex the tube and then do a quick spin (less than 5000xg) to concentrate the liquid at the bottom.
5. Store the suspended plasmid at -20°C. The DNA is stable for at least one year from date of shipping when stored at -20°C.

RefSeq: [BC016603](#), [AAH16603](#)

RefSeq Size: 1393 bp

RefSeq ORF: 776 bp

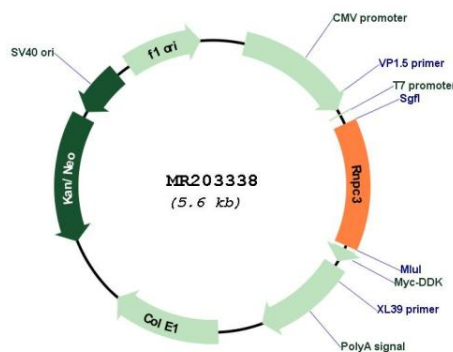
Locus ID: 67225

Cytogenetics: 3 F3

MW: 29.5 kDa

Gene Summary: Participates in pre-mRNA U12-dependent splicing, performed by the minor spliceosome which removes U12-type introns. U12-type introns comprises less than 1% of all non-coding sequences. Binds to the 3'-stem-loop of m(7)G-capped U12 snRNA (By similarity).
[UniProtKB/Swiss-Prot Function]

Product images:



Circular map for MR203338