

## Product datasheet for **MR203321**

### Enoph1 (NM\_026421) Mouse Tagged ORF Clone

#### Product data:

Product Type:	Expression Plasmids
Product Name:	Enoph1 (NM_026421) Mouse Tagged ORF Clone
Tag:	Myc-DDK
Symbol:	Enoph1
Synonyms:	2310057D15Rik; BB183658; C81437
Mammalian Cell Selection:	Neomycin
Vector:	pCMV6-Entry (PS100001)
E. coli Selection:	Kanamycin (25 ug/mL)
ORF Nucleotide Sequence:	>MR203321 ORF sequence Red=Cloning site Blue=ORF Green=Tags(s)

TTTTGTAATACGACTCACTATAGGGCGCCGGGAATTCGTCGACTGGATCCGGTACCGAGGAGATCTGCC  
GCC**CGATCGCC**

ATGGTCGTGGTTCCGTGCCCGCCGAAGTCACCGTAATCCTGTTAGATATCGAAGGTACCACAACCCCGA  
TTGCTTTCGTGAAGGATGTTTTATTTCCGTACATCAAAGAAAATGTCAAGGAGTACCTGCAGACCCACTG  
GGAGGAGGAGGAGTGTGAGCAGGACATCAGCCTGCTGAGGAAACAGGCCGAGGAAGATGCACATCTGGAC  
GGGGCTGTTCTGATACCCGTGGCTTCTGGCAGTGATCTGCAGCAGATGATCCAGGCTGTGGTGGACAACG  
TGTAAGTGGCAGATGTCCCATGACCGAAAGACCACAGCGCTCAAACAGCTGCAAGGCCACATGTGGAAGGC  
AGCTTTCACGGCTGGCCGCATGAAGGCAGAGTTCTTTGCAGATGTGGTTCCTGCAGTCAGAAGGTGGAGA  
GAGGCTGGGATGAAGGTATACATCTATTCTTCAGGGAGCGTGGAGGCACAGAAGCTGCTCTTCGGCCATT  
CCACAGAGGGAGACATTCTTGAGCTCATCGACGGTCACTTTGACACCAAGATTGGACACAAAGTGGACAG  
TGAGAGTTACCGGAAGATTGCTGATAGCATCGGTTGTTCAACCAACAACATCCTGTTTCTCACGGATGTC  
ACCGTAGAGGCCAGTGTCTGCTGAGGAGGCGGACGTGCACGTGGCTGTGGTGGTGGCAGCTGGCAACGCGG  
GGCTCACTGACGACGAGAAGACATACTACAACCTCATCACGTCTTCAGCGAGCTCTACCTGCCGTCCAC  
C

**ACGCGT**ACGCGGCCGCTCGAGCAGAAACTCATCTCAGAAGAGGATCTGGCAGCAAATGATATCCTGGATT  
ACAAGGATGACGACGATAAGGTTTAA



[View online »](#)

**Protein Sequence:** >MR203321 protein sequence  
 Red=Cloning site Green=Tags(s)

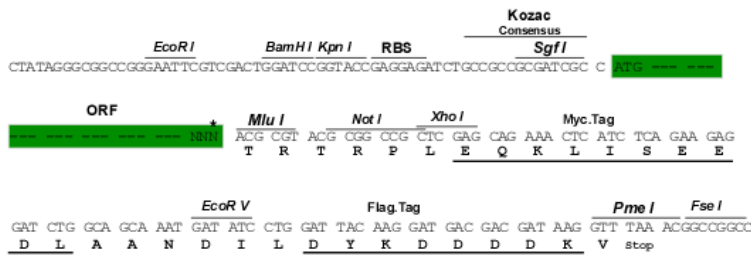
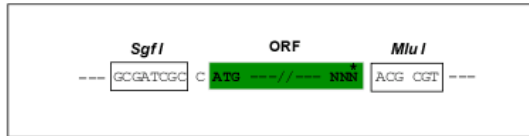
MVVVSVPAEVTVILLDIEGTTTPIAFVKDVLFPYIKENVKEYLQTHWEEEECQQDISLLRKQAEEDAHL  
 DGAVLIPVASGSDLQQMIQAVVDNVYQMSHDRKTTALKQLQGHMKAFAFTAGRMKAEFFADVVPVRRWR  
 EAGMKVYIYSSGSVEAQKLLFGHSTEGDILELIDGHFDTKIGHKVDSESYRKIADSIGCSTNNILFLTDV  
 TVEASAAEEADVHVAVVVRPGNAGLTDDEKTYNLTISFSELYLPST

TRTRPLEQKLISEEDLAANDILDYKDDDDKV

**Restriction Sites:** SgfI-MluI

**Cloning Scheme:**

Cloning sites used for ORF Shuttling:



\* The last codon before the Stop codon of the ORF

**ACCN:** NM\_026421

**ORF Size:** 774 bp

**OTI Disclaimer:** The molecular sequence of this clone aligns with the gene accession number as a point of reference only. However, individual transcript sequences of the same gene can differ through naturally occurring variations (e.g. polymorphisms), each with its own valid existence. This clone is substantially in agreement with the reference, but a complete review of all prevailing variants is recommended prior to use. [More info](#)

**OTI Annotation:** This clone was engineered to express the complete ORF with an expression tag. Expression varies depending on the nature of the gene.

**Components:** The ORF clone is ion-exchange column purified and shipped in a 2D barcoded Matrix tube containing 10ug of transfection-ready, dried plasmid DNA (reconstitute with 100 ul of water).

**Reconstitution Method:**

1. Centrifuge at 5,000xg for 5min.
2. Carefully open the tube and add 100ul of sterile water to dissolve the DNA.
3. Close the tube and incubate for 10 minutes at room temperature.
4. Briefly vortex the tube and then do a quick spin (less than 5000xg) to concentrate the liquid at the bottom.
5. Store the suspended plasmid at -20°C. The DNA is stable for at least one year from date of shipping when stored at -20°C.

**RefSeq:** [NM\\_026421.1](#), [NM\\_026421.2](#), [NM\\_026421.3](#), [NP\\_080697.1](#)

**RefSeq Size:** 1844 bp

**RefSeq ORF:** 774 bp

**Locus ID:** 67870

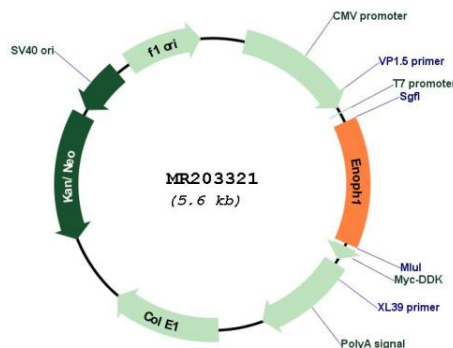
**UniProt ID:** [Q8BGB7](#)

**Cytogenetics:** 5 E4

**MW:** 28.6 kDa

**Gene Summary:** Bifunctional enzyme that catalyzes the enolization of 2,3-diketo-5-methylthiopentyl-1-phosphate (DK-MTP-1-P) into the intermediate 2-hydroxy-3-keto-5-methylthiopentenyl-1-phosphate (HK-MTPenyl-1-P), which is then dephosphorylated to form the acireductone 1,2-dihydroxy-3-keto-5-methylthiopentene (DHK-MTPene).[UniProtKB/Swiss-Prot Function]

### Product images:



Circular map for MR203321