

## Product datasheet for MR203312

### Rpl8 (NM\_012053) Mouse Tagged ORF Clone

#### Product data:

Product Type:	Expression Plasmids
Product Name:	Rpl8 (NM_012053) Mouse Tagged ORF Clone
Tag:	Myc-DDK
Symbol:	Rpl8
Mammalian Cell Selection:	Neomycin
Vector:	pCMV6-Entry (PS100001)
E. coli Selection:	Kanamycin (25 ug/mL)
ORF Nucleotide Sequence:	>MR203312 representing NM_012053 Red=Cloning site Blue=ORF Green=Tags(s)

TTTTGTAATACGACTCACTATAGGGCGGCCGGAATTCGTCGACTGGATCCGGTACCGAGGAGATCTGCC  
GCC**CGATCGCC**

ATGGGCCGTGTGATCCGAGGGCAGAGGAAAGGCGGGTTCTGTTTTCCGTGCGCACGTGAAGCACCGTA  
AGGGCGCCGCGCGCTACGTGCTGTGGACTTCGCGGAGCGACACGGCTACATTAAGGCATCGTAAAGGA  
CATCATTATGACCCTGGCCGCGCGCTCCCCTCGCAAAGTCGTCTTCGGGATCCCTACCGATTCAAG  
AAGCGGACAGAGCTGTTTCATCGCAGCGGAGGGGATCCACACTGGACAGTTCGTGTACTGCGGCAAGAAGG  
CCCAGCTGAATATCGGCAATGTTTTGCCGTGGGCACCATGCCTGAGGGTACGATCGTGTGTTGCTGGA  
GGAGAAAACCTGGGGACAGGGCAAGCTGGCCCGAGCCTCCGGGAACTACGCCACAGTCATCTCCACAAC  
CCAGAGACCAAGAAGACTCGAGTGAAGTGCCTTCGGGGTCCAAGAAGGTCATTTCTCTGCCAACAGAG  
CCGTTGTTGGTGTGTGGCTGGTGGGGCAGAATTGACAAGCCTATCTTAAAGGCTGGCCGTGCCTACCA  
CAAGTACAAGGCAAAGAGGAAGTCTGGCCACGTGTGCGGGTGTGGCCATGAATCCTGTGGAGCATCCC  
TTTGGAGGTGTAACCACCAGCACATTGGCAAACCCTCCACCATCCGAAGAGATGCCCTGCTGGGCGCA  
AAGTGGGTCTCATTGCTGCCCGCGGACTGGACGGCTGCGTGAACCAAACTGTACAGGAGAAGGAGAA  
C

**ACGCGT**ACGCGGCCGCTCGAGCAGAAACTCATCTCAGAAGAGGATCTGGCAGCAAATGATATCCTGGATT  
ACAAGGATGACGACGATAAGGTTTAA



[View online »](#)

Protein Sequence: >MR203312 representing NM\_012053  
 Red=Cloning site Green=Tags(s)

MGRVIRGQRKAGSVFRAHVKHRKGAARLRAVDF AERHGYIKGIVKDI IHDPGRGAPLAKVVFRDPYRFK  
 KRTELFIAAEGIHTGQFVYCGKKAQLNIGNVLPVGTMP EGTIVCCLEEKPGDRGKLARASGNYATVISHN  
 PETKKTRVKLPSGSKKVISSANRAVVG VVAGGGRIDKPKILKAGRAYHKYKAKRNCWPRVRGVAMNPVEHP  
 FGGGNHQHIGKPKSTIRR DAPAGRKVGLIAARRTGRLRGTKTVQEKEN

TRTRPLEQKLISEEDLAANDILDYKDDDDKV

Chromatograms: [https://cdn.origene.com/chromatograms/mm9058\\_h05.zip](https://cdn.origene.com/chromatograms/mm9058_h05.zip)

Restriction Sites: SgfI-MluI

Cloning Scheme:



ACCN: NM\_012053

ORF Size: 771 bp

OTI Disclaimer: The molecular sequence of this clone aligns with the gene accession number as a point of reference only. However, individual transcript sequences of the same gene can differ through naturally occurring variations (e.g. polymorphisms), each with its own valid existence. This clone is substantially in agreement with the reference, but a complete review of all prevailing variants is recommended prior to use. [More info](#)

OTI Annotation: This clone was engineered to express the complete ORF with an expression tag. Expression varies depending on the nature of the gene.

Components: The ORF clone is ion-exchange column purified and shipped in a 2D barcoded Matrix tube containing 10ug of transfection-ready, dried plasmid DNA (reconstitute with 100 ul of water).

**Reconstitution Method:**

1. Centrifuge at 5,000xg for 5min.
2. Carefully open the tube and add 100ul of sterile water to dissolve the DNA.
3. Close the tube and incubate for 10 minutes at room temperature.
4. Briefly vortex the tube and then do a quick spin (less than 5000xg) to concentrate the liquid at the bottom.
5. Store the suspended plasmid at -20°C. The DNA is stable for at least one year from date of shipping when stored at -20°C.

**RefSeq:** [NM\\_012053.2](#), [NP\\_036183.1](#)

**RefSeq Size:** 862 bp

**RefSeq ORF:** 774 bp

**Locus ID:** 26961

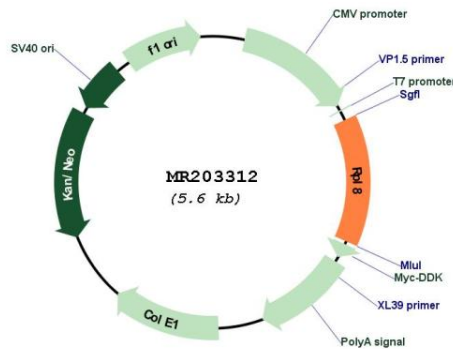
**UniProt ID:** [P62918](#)

**Cytogenetics:** 15 D3

**MW:** 28 kDa

**Gene Summary:** Component of the large ribosomal subunit.[UniProtKB/Swiss-Prot Function]

**Product images:**



Circular map for MR203312